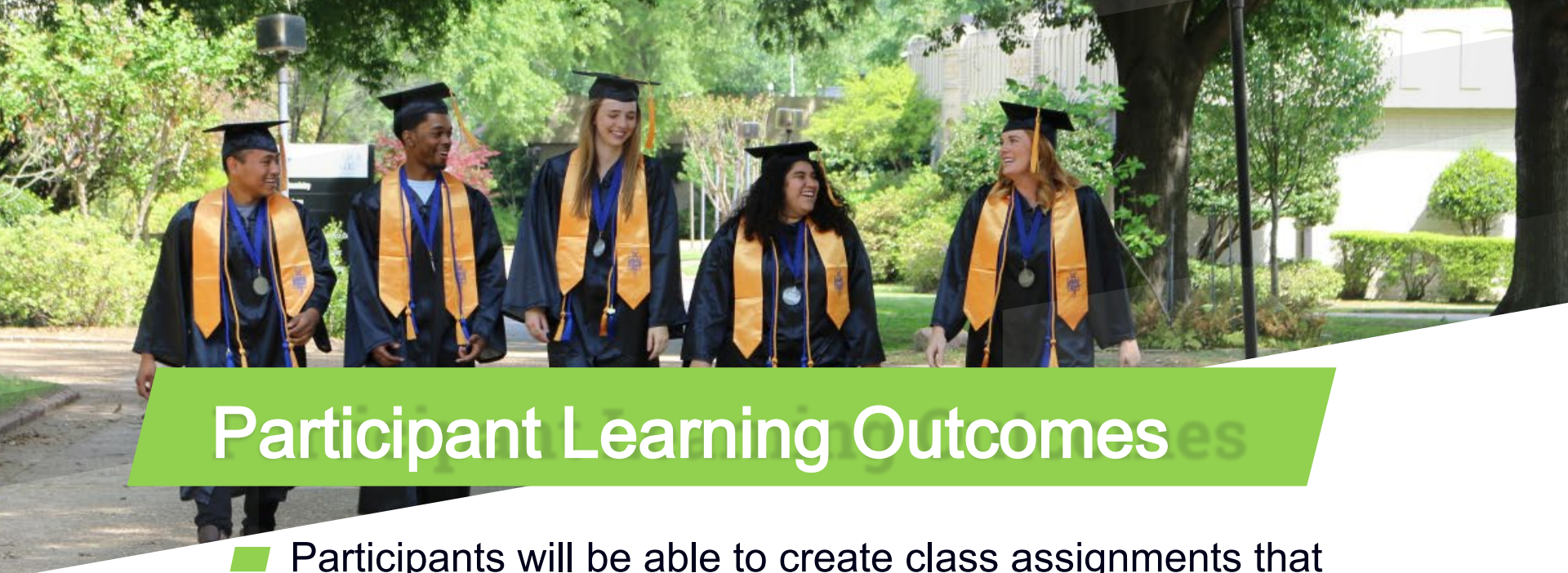


Building a Culture of Completion at Texarkana College

Dr. Dixon Boyles,
Chief Instructional Officer
Dr. Donna McDaniel,
Vice President of Instruction

NOVEMBER 7, 2019



Participant Learning Outcomes

- Participants will be able to create class assignments that ensure student engagement and active planning of their academic/ career pathways.
- Participants will be able to develop scalable strategies for developing and implementing strategic goals that involve multiple departments.

8,165

Annual unduplicated
headcount, including all **credit**
and **continuing education**
students

5,260

Annual unduplicated
headcount for **credit** students

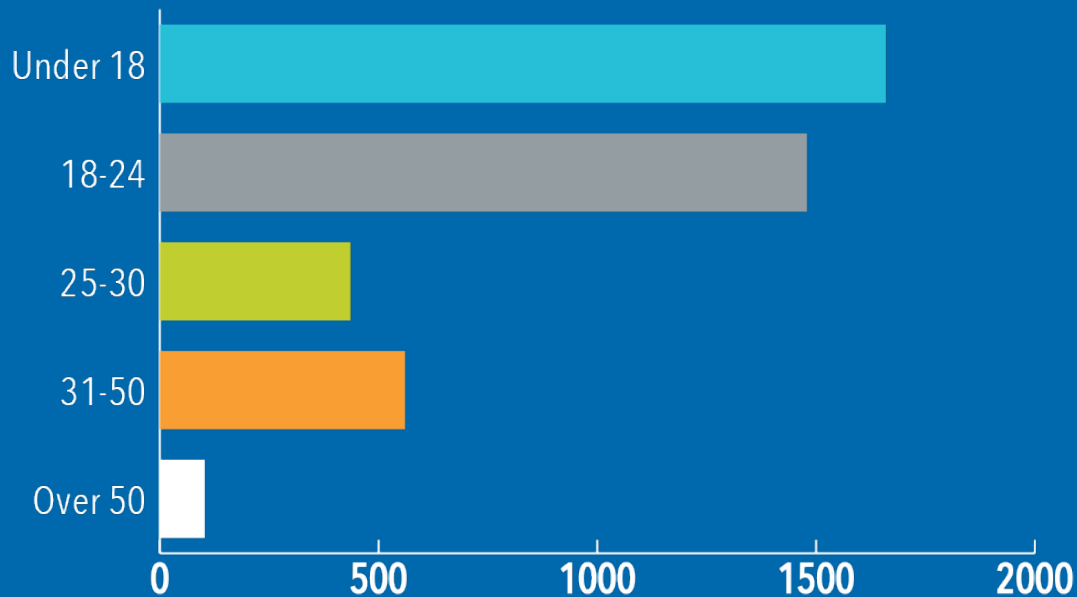




AVERAGE AGE

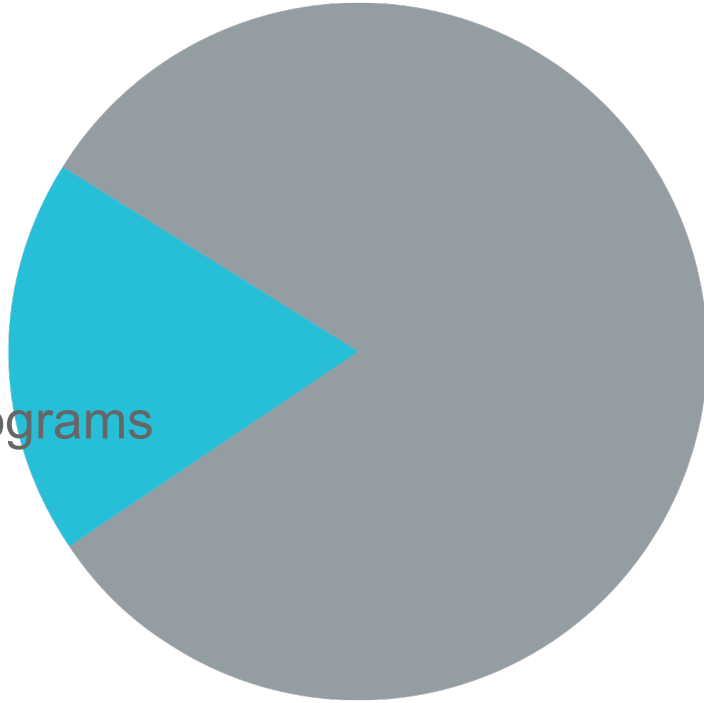
22

STUDENT AGE



18.7%

Enrolled in
workforce programs



81.3%

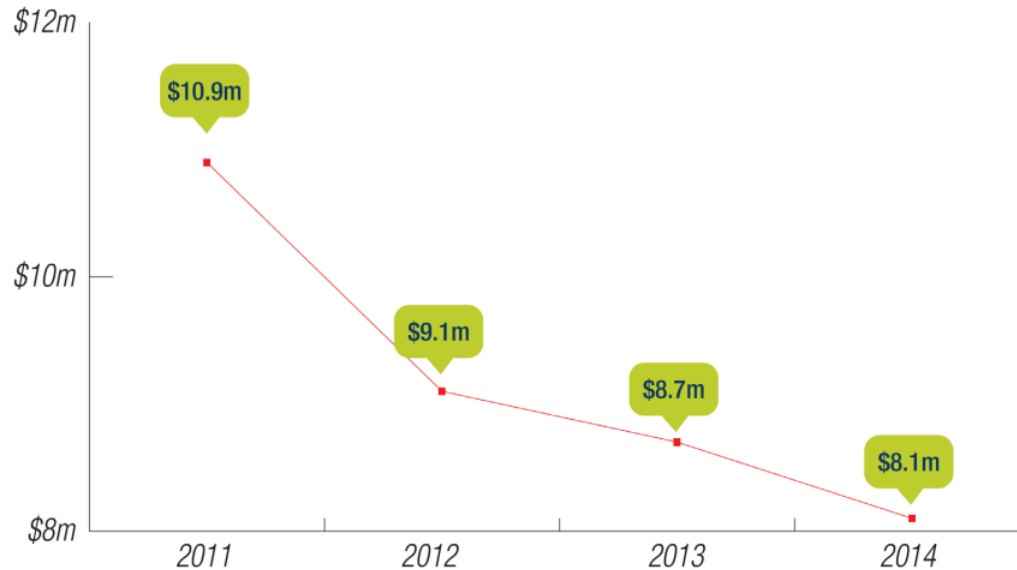
Enrolled in
academic programs

- Low completion rates
- Huge equity gaps in student success
- Accreditation and financial challenges
- Lack of coherence among completion efforts
- Disastrous leadership of previous administration

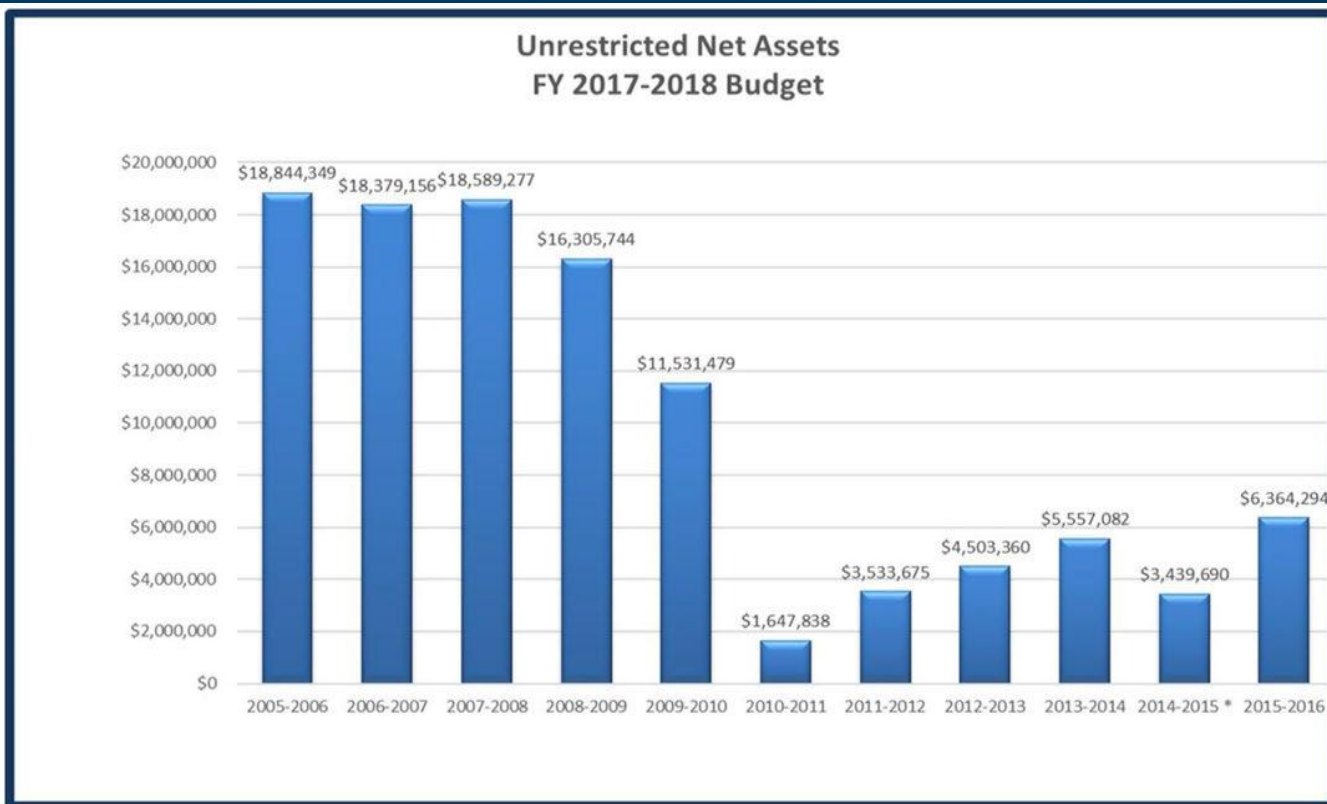
For the past few legislative cycles, the **legislature has cut community college funding**, increasing the burden on local taxpayers.

This chart depicts just Texarkana College's state funding cuts over the past several years.

CHANGES IN TC STATE FUNDING SINCE 2011

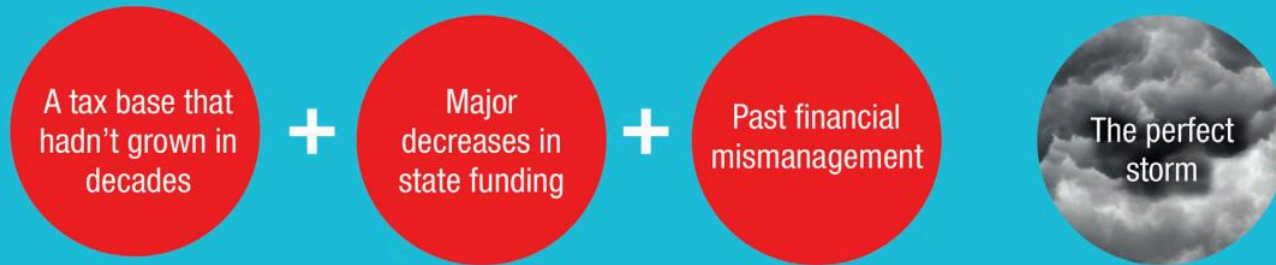


ACCREDITATION & FINANCIAL CHALLENGES



*Decrease in Unrestricted Net Assets in 2014-15 due to GASB 68 reporting changes.

This trend of decreased state funding is part of what led to Texarkana College's **financial crisis** in 2012.



In 2012, the TC tax district was only 16.3 square miles—**less than 1%** of the college's 1,800 square mile service area paid taxes to support the college. Combined with declining state funding and a past administration's financial mismanagement, the college faced a serious financial crisis—the college **lost \$8.5 million in 2011 alone**.

IN THE COMMUNITY



CUTTING
COSTS

TC has cut expenses, re-negotiated pricey contracts, reduced payroll, and implemented cost-saving energy management measures

▼ **12.7%**

decrease in payroll
and wages since
2010/2011

▼ **\$1 million**

yearly savings from
switching to new ERP
(computer software system)



ONE-TIME
DONATIONS

The college has raised **\$9 million** in private one-time donations over the past four years, including a \$5 million gift from alumnus H. Ross Perot.



EXPANDING
TAX DISTRICT

Bowie County citizens voted to expand the 16.3 square mile tax district to encompass all of Bowie County, creating additional tax income and increasing board representation.

▲ **\$3.9 million** ▼ **\$1.5 million**

increase in tax income from
2012/2013 to 2013/2014
due to the tax district expansion.

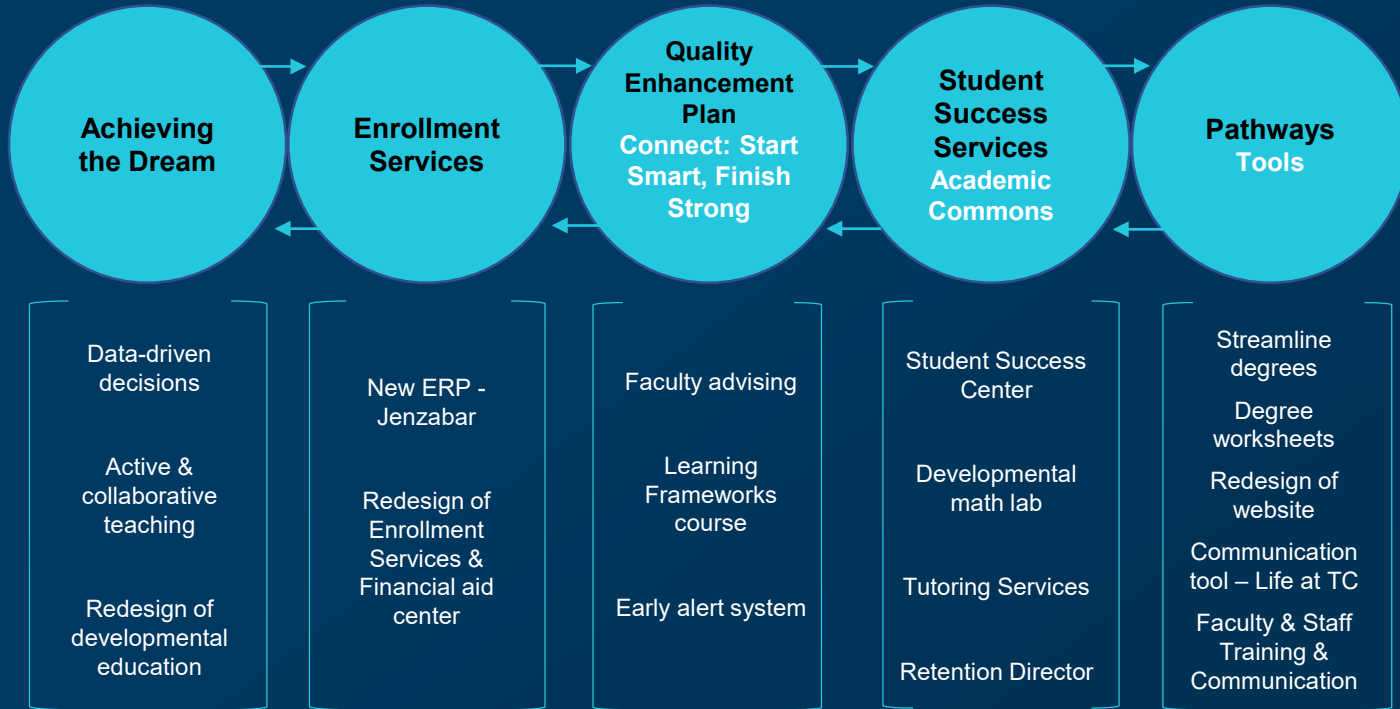
decrease in tuition income after
extending in-district tuition rates
to all students in Bowie County

resulting in a **\$2.4 million net gain**
from the tax district expansion



TEXARKANA COLLEGE

CONNECTING THE WORK TOWARD PERSISTENCE & COMPLETION





Texarkana College's 2016 Quality Enhancement Plan

TC IPEDS 3-Year Graduation Rate (150%)

In 2011, based on the 2008 Student Cohort, our rate was only

10%

At the same time, our rate for African Americans was at

3.7%

A collage of graduates in caps and gowns. In the foreground, a young woman with long dark hair and red lipstick smiles. Next to her, a young woman with dark hair and a yellow tassel on her cap looks to the side. In the background, other graduates are visible, including a woman with blonde hair and a man with a beard.

QEP Development

1. Higher GPA's
2. Increased retention
3. Increased persistence
4. Increased graduation rates



COMMUNITY COLLEGE SURVEY OF STUDENT ENGAGEMENT HIGH IMPACT PRACTICES

- Orientation
- First year experience/ seminar
- Student success course
- Learning community
- Academic goal setting and planning
- Registration before classes begin
- Alert and intervention

1. Faculty Advising
2. Learning Frameworks
3. Early Alert



STRATEGIES




Faculty Advising

Relationships
Matter ~

Maximizing Our
Greatest Asset

PATHWAYS



Texarkana College
Degree Plan
2017 - 2018
Associate of Arts Degree
Major: Business Administration

Bring in this degree plan
every time you meet with
an advisor for advising.

Expires in 5 years

Student Name _____ SID# _____ FA student? _____ VA student? _____

Student Signature _____ Date _____

Advisor's Name _____ Advisor's Signature _____

Is recommendation required? ☐ Yes ☐ No TSM# (advisor) _____ Building _____ Room _____ Writing _____


Comments: _____

TC Course Title	Registered Course's Title	Credit Hours	Semester Course Completed	Grade	Comments
CORE COURSES – 42 Total Hours					
ENGL 1101	Composition I ¹	3			
ENGL 1102	Composition II ¹	3			
ENGL 2511	Technical & Business Writing ²	3			
MATH 1124	Math for Business & Soc Sci ³	3			
MATH 1124	ONE				
MATH 1124	College Algebra ⁴	3			
BIOL 1101	United States History I ⁵	3			
BIOL 1102	United States History II ⁵	3			
BIOL 1103	Creative Arts Elective ⁶	3			
BIOL 1104	Social and Behavioral Sciences ⁶	3			
SPCH 1101	Public Speaking ⁷	3			
SPCH 1101	ONE				
SPCH 1101	Business & Professional Speaking ⁸	3			
SPCH 1101	Language, Philosophy, & Culture ⁹	3			
SPCH 1101	Federal Government ⁹	3			
SPCH 1101	Texas Government ⁹	3			
SPCH 1101	Life & Physical Sciences ⁹	3			
SPCH 1101	Life & Physical Sciences ⁹	3			
SPCH 1101	Business Computer Applications ⁹	3			
SPCH 1101	ONE				
SPCH 1101	Learning Experiences ⁹	3			
SPCH 1101	ONE				
TOTAL CORE HOURS		42			
ADDITIONAL COURSES FOR DEGREE – 18 Total Hours (Continued on Back)					
MATH 1125	Calculus for Business & Soc Sci ³	3			

Fall 2017



Degree planning sheets



Articulation Agreement: Texarkana College and Texas A&M
University–Texarkana 2+2 Program Leading to
Bachelor of Science in Psychology: Sociology minor

Note: This is only a guide. It does not constitute an official degree plan.

Texarkana College Courses		TAMU Courses	
Courses	hrs.	Courses	hrs.
BIOL 1101	3	BIOL 1101	3
BIOL 1102	3	BIOL 1102	3
MATH 1124	3	BIOL 1103	3
BIOL 1101	3	BIOL 1104	3
BIOL 1102	3	BIOL 1105	3
GOVT 2306	3	BIOL 1106	3
GOVT 2306	3	BIOL 1107	3
Core Creative Arts	3	BIOL 1108	3
SPCH 1101	3	BIOL 1109	3
BIOL 1101/1102, 1107/1107, 1108/1108, 1109/1109, 1110/1110, 1111/1111, 1112/1112, 1113/1113, 1114/1114, 1115/1115, 1116/1116, 1117/1117, 1118/1118, 1119/1119, 1120/1120, 1121/1121, 1122/1122, 1123/1123, 1124/1124, 1125/1125, 1126/1126, 1127/1127, 1128/1128, 1129/1129, 1130/1130, 1131/1131, 1132/1132, 1133/1133, 1134/1134, 1135/1135, 1136/1136, 1137/1137, 1138/1138, 1139/1139, 1140/1140, 1141/1141, 1142/1142, 1143/1143, 1144/1144, 1145/1145, 1146/1146, 1147/1147, 1148/1148, 1149/1149, 1150/1150, 1151/1151, 1152/1152, 1153/1153, 1154/1154, 1155/1155, 1156/1156, 1157/1157, 1158/1158, 1159/1159, 1160/1160, 1161/1161, 1162/1162, 1163/1163, 1164/1164, 1165/1165, 1166/1166, 1167/1167, 1168/1168, 1169/1169, 1170/1170, 1171/1171, 1172/1172, 1173/1173, 1174/1174, 1175/1175, 1176/1176, 1177/1177, 1178/1178, 1179/1179, 1180/1180, 1181/1181, 1182/1182, 1183/1183, 1184/1184, 1185/1185, 1186/1186, 1187/1187, 1188/1188, 1189/1189, 1190/1190, 1191/1191, 1192/1192, 1193/1193, 1194/1194, 1195/1195, 1196/1196, 1197/1197, 1198/1198, 1199/1199, 1200/1200, 1201/1201, 1202/1202, 1203/1203, 1204/1204, 1205/1205, 1206/1206, 1207/1207, 1208/1208, 1209/1209, 1210/1210, 1211/1211, 1212/1212, 1213/1213, 1214/1214, 1215/1215, 1216/1216, 1217/1217, 1218/1218, 1219/1219, 1220/1220, 1221/1221, 1222/1222, 1223/1223, 1224/1224, 1225/1225, 1226/1226, 1227/1227, 1228/1228, 1229/1229, 1230/1230, 1231/1231, 1232/1232, 1233/1233, 1234/1234, 1235/1235, 1236/1236, 1237/1237, 1238/1238, 1239/1239, 1240/1240, 1241/1241, 1242/1242, 1243/1243, 1244/1244, 1245/1245, 1246/1246, 1247/1247, 1248/1248, 1249/1249, 1250/1250, 1251/1251, 1252/1252, 1253/1253, 1254/1254, 1255/1255, 1256/1256, 1257/1257, 1258/1258, 1259/1259, 1260/1260, 1261/1261, 1262/1262, 1263/1263, 1264/1264, 1265/1265, 1266/1266, 1267/1267, 1268/1268, 1269/1269, 1270/1270, 1271/1271, 1272/1272, 1273/1273, 1274/1274, 1275/1275, 1276/1276, 1277/1277, 1278/1278, 1279/1279, 1280/1280, 1281/1281, 1282/1282, 1283/1283, 1284/1284, 1285/1285, 1286/1286, 1287/1287, 1288/1288, 1289/1289, 1290/1290, 1291/1291, 1292/1292, 1293/1293, 1294/1294, 1295/1295, 1296/1296, 1297/1297, 1298/1298, 1299/1299, 1300/1300, 1301/1301, 1302/1302, 1303/1303, 1304/1304, 1305/1305, 1306/1306, 1307/1307, 1308/1308, 1309/1309, 1310/1310, 1311/1311, 1312/1312, 1313/1313, 1314/1314, 1315/1315, 1316/1316, 1317/1317, 1318/1318, 1319/1319, 1320/1320, 1321/1321, 1322/1322, 1323/1323, 1324/1324, 1325/1325, 1326/1326, 1327/1327, 1328/1328, 1329/1329, 1330/1330, 1331/1331, 1332/1332, 1333/1333, 1334/1334, 1335/1335, 1336/1336, 1337/1337, 1338/1338, 1339/1339, 1340/1340, 1341/1341, 1342/1342, 1343/1343, 1344/1344, 1345/1345, 1346/1346, 1347/1347, 1348/1348, 1349/1349, 1350/1350, 1351/1351, 1352/1352, 1353/1353, 1354/1354, 1355/1355, 1356/1356, 1357/1357, 1358/1358, 1359/1359, 1360/1360, 1361/1361, 1362/1362, 1363/1363, 1364/1364, 1365/1365, 1366/1366, 1367/1367, 1368/1368, 1369/1369, 1370/1370, 1371/1371, 1372/1372, 1373/1373, 1374/1374, 1375/1375, 1376/1376, 1377/1377, 1378/1378, 1379/1379, 1380/1380, 1381/1381, 1382/1382, 1383/1383, 1384/1384, 1385/1385, 1386/1386, 1387/1387, 1388/1388, 1389/1389, 1390/1390, 1391/1391, 1392/1392, 1393/1393, 1394/1394, 1395/1395, 1396/1396, 1397/1397, 1398/1398, 1399/1399, 1400/1400, 1401/1401, 1402/1402, 1403/1403, 1404/1404, 1405/1405, 1406/1406, 1407/1407, 1408/1408, 1409/1409, 1410/1410, 1411/1411, 1412/1412, 1413/1413, 1414/1414, 1415/1415, 1416/1416, 1417/1417, 1418/1418, 1419/1419, 1420/1420, 1421/1421, 1422/1422, 1423/1423, 1424/1424, 1425/1425, 1426/1426, 1427/1427, 1428/1428, 1429/1429, 1430/1430, 1431/1431, 1432/1432, 1433/1433, 1434/1434, 1435/1435, 1436/1436, 1437/1437, 1438/1438, 1439/1439, 1440/1440, 1441/1441, 1442/1442, 1443/1443, 1444/1444, 1445/1445, 1446/1446, 1447/1447, 1448/1448, 1449/1449, 1450/1450, 1451/1451, 1452/1452, 1453/1453, 1454/1454, 1455/1455, 1456/1456, 1457/1457, 1458/1458, 1459/1459, 1460/1460, 1461/1461, 1462/1462, 1463/1463, 1464/1464, 1465/1465, 1466/1466, 1467/1467, 1468/1468, 1469/1469, 1470/1470, 1471/1471, 1472/1472, 1473/1473, 1474/1474, 1475/1475, 1476/1476, 1477/1477, 1478/1478, 1479/1479, 1480/1480, 1481/1481, 1482/1482, 1483/1483, 1484/1484, 1485/1485, 1486/1486, 1487/1487, 1488/1488, 1489/1489, 1490/1490, 1491/1491, 1492/1492, 1493/1493, 1494/1494, 1495/1495, 1496/1496, 1497/1497, 1498/1498, 1499/1499, 1500/1500, 1501/1501, 1502/1502, 1503/1503, 1504/1504, 1505/1505, 1506/1506, 1507/1507, 1508/1508, 1509/1509, 1510/1510, 1511/1511, 1512/1512, 1513/1513, 1514/1514, 1515/1515, 1516/1516, 1517/1517, 1518/1518, 1519/1519, 1520/1520, 1521/1521, 1522/1522, 1523/1523, 1524/1524, 1525/1525, 1526/1526, 1527/1527, 1528/1528, 1529/1529, 1530/1530, 1531/1531, 1532/1532, 1533/1533, 1534/1534, 1535/1535, 1536/1536, 1537/1537, 1538/1538, 1539/1539, 1540/1540, 1541/1541, 1542/1542, 1543/1543, 1544/1544, 1545/1545, 1546/1546, 1547/1547, 1548/1548, 1549/1549, 1550/1550, 1551/1551, 1552/1552, 1553/1553, 1554/1554, 1555/1555, 1556/1556, 1557/1557, 1558/1558, 1559/1559, 1560/1560, 1561/1561, 1562/1562, 1563/1563, 1564/1564, 1565/1565, 1566/1566, 1567/1567, 1568/1568, 1569/1569, 1570/1570, 1571/1571, 1572/1572, 1573/1573, 1574/1574, 1575/1575, 1576/1576, 1577/1577, 1578/1578, 1579/1579, 1580/1580, 1581/1581, 1582/1582, 1583/1583, 1584/1584, 1585/1585, 1586/1586, 1587/1587, 1588/1588, 1589/1589, 1590/1590, 1591/1591, 1592/1592, 1593/1593, 1594/1594, 1595/1595, 1596/1596, 1597/1597, 1598/1598, 1599/1599, 1600/1600, 1601/1601, 1602/1602, 1603/1603, 1604/1604, 1605/1605, 1606/1606, 1607/1607, 1608/1608, 1609/1609, 1610/1610, 1611/1611, 1612/1612, 1613/1613, 1614/1614, 1615/1615, 1616/1616, 1617/1617, 1618/1618, 1619/1619, 1620/1620, 1621/1621, 1622/1622, 1623/1623, 1624/1624, 1625/1625, 1626/1626, 1627/1627, 1628/1628, 1629/1629, 1630/1630, 1631/1631, 1632/1632, 1633/1633, 1634/1634, 1635/1635, 1636/1636, 1637/1637, 1638/1638, 1639/1639, 1640/1640, 1641/1641, 1642/1642, 1643/1643, 1644/1644, 1645/1645, 1646/1646, 1647/1647, 1648/1648, 1649/1649, 1650/1650, 1651/1651, 1652/1652, 1653/1653, 1654/1654, 1655/1655, 1656/1656, 1657/1657, 1658/1658, 1659/1659, 1660/1660, 1661/1661, 1662/1662, 1663/1663, 1664/1664, 1665/1665, 1666/1666, 1667/1667, 1668/1668, 1669/1669, 1670/1670, 1671/1671, 1672/1672, 1673/1673, 1674/1674, 1675/1675, 1676/1676, 1677/1677, 1678/1678, 1679/1679, 1680/1680, 1681/1681, 1682/1682, 1683/1683, 1684/1684, 1685/1685, 1686/1686, 1687/1687, 1688/1688, 1689/1689, 1690/1690, 1691/1691, 1692/1692, 1693/1693, 1694/1694, 1695/1695, 1696/1696, 1697/1697, 1698/1698, 1699/1699, 1700/1700, 1701/1701, 1702/1702, 1703/1703, 1704/1704, 1705/1705, 1706/1706, 1707/1707, 1708/1708, 1709/1709, 1710/1710, 1711/1711, 1712/1712, 1713/1713, 1714/1714, 1715/1715, 1716/1716, 1717/1717, 1718/1718, 1719/1719, 1720/1720, 1721/1721, 1722/1722, 1723/1723, 1724/1724, 1725/1725, 1726/1726, 1727/1727, 1728/1728, 1729/1729, 1730/1730, 1731/1731, 1732/1732, 1733/1733, 1734/1734, 1735/1735, 1736/1736, 1737/1737, 1738/1738, 1739/1739, 1740/1740, 1741/1741, 1742/1742, 1743/1743, 1744/1744, 1745/1745, 1746/1746, 1747/1747, 1748/1748, 1749/1749, 1750/1750, 1751/1751, 1752/1752, 1753/1753, 1754/1754, 1755/1755, 1756/1756, 1757/1757, 1758/1758, 1759/1759, 1760/1760, 1761/1761, 1762/1762, 1763/1763, 1764/1764, 1765/1765, 1766/1766, 1767/1767, 1768/1768, 1769/1769, 1770/1770, 1771/1771, 1772/1772, 1773/1773, 1774/1774, 1775/1775, 1776/1776, 1777/1777, 1778/1778, 1779/1779, 1780/1780, 1781/1781, 1782/1782, 1783/1783, 1784/1784, 1785/1785, 1786/1786, 1787/1787, 1788/1788, 1789/1789, 1790/1790, 1791/1791, 1792/1792, 1793/1793, 1794/1794, 1795/1795, 1796/1796, 1797/1797, 1798/1798, 1799/1799, 1800/1800, 1801/1801, 1802/1802, 1803/1803, 1804/1804, 1805/1805, 1806/1806, 1807/1807, 1808/1808, 1809/1809, 1810/1810, 1811/1811, 1812/1812, 1813/1813, 1814/1814, 1815/1815, 1816/1816, 1817/1817, 1818/1818, 1819/1819, 1820/1820, 1821/1821, 1822/1822, 1823/1823, 1824/1824, 1825/1825, 1826/1826, 1827/1827, 1828/1828, 1829/1829, 1830/1830, 1831/1831, 1832/1832, 1833/1833, 1834/1834, 1835/1835, 1836/1836, 1837/1837, 1838/1838, 1839/1839, 1840/1840, 1841/1841, 1842/1842, 1843/1843, 1844/1844, 1845/1845, 1846/1846, 1847/1847, 1848/1848, 1849/1849, 1850/1850, 1851/1851, 1852/1852, 1853/1853, 1854/1854, 1855/1855, 1856/1856, 1857/1857, 1858/1858, 1859/1859, 1860/1860, 1861/1861, 1862/1862, 1863/1863, 1864/1864, 1865/1865, 1866/1866, 1867/1867, 1868/1868, 1869/1869, 1870/1870, 1871/1871, 1872/1872, 1873/1873, 1874/1874, 1875/1875, 1876/1876, 1877/1877, 1878/1878, 1879/1879, 1880/1880, 1881/1881, 1882/1882, 1883/1883, 1884/1884, 1885/1885, 1886/1886, 1887/1887, 1888/1888, 1889/1889, 1890/1890, 1891/1891, 1892/1892, 1893/1893, 1894/1894, 1895/1895, 1896/1896, 1897/1897, 1898/1898, 1899/1899, 1900/1900, 1901/1901, 1902/1902, 1903/1903, 1904/1904, 1905/1905, 1906/1906, 1907/1907, 1908/1908, 1909/1909, 1910/1910, 1911/1911, 1912/1912, 1913/1913, 1914/1914, 1915/1915, 1916/1916, 1917/1917, 1918/1918, 1919/1919, 1920/1920, 1921/1921, 1922/1922, 1923/1923, 1924/1924, 1925/1925, 1926/1926, 1927/1927, 1928/1928, 1929/1929, 1930/1930, 1931/1931, 1932/1932, 1933/1933, 1934/1934, 1935/1935, 1936/1936, 1937/1937, 1938/1938, 1939/1939, 1940/1940, 1941/1941, 1942/1942, 1943/1943, 1944/1944, 1945/1945, 1946/1946, 1947/1947, 1948/1948, 1949/1949, 1950/1950, 1951/1951, 1952/1952, 1953/1953, 1954/1954, 1955/1955, 1956/1956, 1957/1957, 1958/1958, 1959/1959, 1960/1960, 1961/1961, 1962/1962, 1963/1963, 1964/1964, 1965/1965, 1966/1966, 1967/1967, 1968/1968, 1969/1969, 1970/1970, 1971/1971, 1972/1972, 1973/1973, 1974/1974, 1975/1975, 1976/1976, 1977/1977, 1978/1978, 1979/1979, 1980/1980, 1981/1981, 1982/1982, 1983/1983, 1984/1984, 1985/1985, 1986/1986, 1987/1987, 1988/1988, 1989/1989, 1990/1990, 1991/1991, 1992/1992, 1993/			



Dr. Catherine Howard | Dean of STEM | catherine.howard@texarkanacollege.edu | 903.823.3285

LIST OF COURSES

Creative Arts Core *

BOL 1306/1106 Majors Biology I/lab
BOL 1307/1107 Majors Biology II/lab
CHEM 1311/1111 General Chemistry I/lab
CHEM 1312/1112 General Chemistry II/lab
CHEM 2325/2125 Organic Chem I/lab
CHEM 2325/2125 Organic Chem II/lab
ENGL 1301 Comp. I
ENGL 1302 Comp. II
Language, Philosophy, Culture Core **
GOVT 2305 Federal Government
GOVT 2306 Texas Government
HIST 1301 US History I
HIST 1302 US History II
MATH 1314 or 2413 College Algebra or Calc
PSYC 1300 Frameworks of Learning
PSYC 2301 for elects General Psychology
SPCH 1315 Public Speaking

YEAR 1	YEAR 2
FALL	FALL
ENGL 1301	**ENGL 2327 or 2328 or 2332 or 2333 OR HIST 2321 or 2322
CHEM 1311/1111	GOVT 2305
HIST 1301	BOL 1306/1106
PSYC 1300	CHEM 2325/2125* or BIOL2301 /2102 or PHYS 1301/1101 or PHYS 2325/2125
MATH 1314 or 2413	
SPRING	SPRING
ENGL 1302	GOVT 2306
CHEM 1312/1112	PSYC 2301 or 2308 or 2314 or 3001 1301
HIST 1302	BOL 1307/1107
SPCH 1315	*ARIS 1301 or GRAM 1310 or 2366 or MUS 1306
	CHEM 2325/2125* or BIOL 2303/ 2102 or PHYS 1302/1102 or PHYS 2326/2126

LEARNING OUTCOMES/MARKETABLE SKILLS

Critical Thinking | Teamwork | Communication | Empirical & Quantitative Reasoning | Technical Proficiency | Numeracy | Organization | Self-Discipline | Time Management | Leadership

EDUCATIONAL OPPORTUNITIES

B.S. Chemistry | B.S. Science Education | B.S. Environmental Chemistry | B.S. Medical Terminology | B.S. Forensic Science

CAREER OPPORTUNITIES

Microbiologist | Physician's Assistant | Medical Doctor | Dentist | Pharmacist | Nature Conservation Officer | Zoologist

HIGH SCHOOL ENDORSEMENTS

STEM | Public Health | Business & Industry | Multi-Disciplinary

LINKS TO COLLEGES & PROFESSIONAL ORGANIZATIONS:

Texas A&M Texarkana Department of Biology: <http://www.tamut.edu/academics/Colleges-and-Departments/STEM/Biology/index.html>
Stephen F. Austin State University Department of Biology: <http://www.sfasu.edu/biology/>
University of North Texas Department of Biology: <https://biology.unt.edu/>
Southern Arkansas University Department of Biological Sciences: <https://web.sau.edu/academics/program/biological-sciences/>
Henderson State University Department of Biology: <http://www.hsu.edu/Biology/index.html>
American Institute of Biological Sciences: <https://www.aibs.org/home/index.html>

Start Smart. Finish Strong.

Texarkana College Core Curriculum

Component Area & Number	SC#	Courses to Choose from
(010) Communication	4	ENGL 1301: Composition I (3) ENGL 1302: Composition II (3) ENGL 2301: Technical & Business Writing (3)
(020) Mathematics	3	MATH 1314: College Algebra (3) MATH 1316: Plane Trigonometry (3) MATH 1324: Finite Math (3) MATH 1325: Calculus for Business & Social Sciences (3) MATH 1326: Calculus for Liberal Arts (3) MATH 1327: Fundamentals of Math (3) MATH 1442: Elementary Statistical Methods (3) MATH 2412: The Calculus (4) MATH 2413: Calculus I (4)
(030) Life & Physical Sciences	6	BOL 1306: Biology for Science Majors I (3) BOL 1306: Biology for Non-Science Majors I (3) BOL 1307: Biology for Science Majors II (3) BOL 1307: Biology for Non-Science Majors II (3) BOL 1311: General Biology (3) BOL 1312: General Biology (3) BOL 2301: Anatomy & Physiology I (3) BOL 2302: Anatomy & Physiology II (3) BOL 2303: General Biology (3) BOL 2325: Microbiology for Non-Science Majors (3) BOL 2326: Microbiology for Science Majors (3) CHEM 1306: Introductory Chemistry I (3) CHEM 1307: General Chemistry I (3) CHEM 1308: Introductory Organic and Biochemistry (4) PHYS 1301: College Physics I (3) PHYS 1302: College Physics II (3) PHYS 1303: Static Systems (3) PHYS 1304: Static Systems (3) PHYS 1315: Physical Science I (3) PHYS 2125: University Physics I (3)
(040) Language, Philosophy & Culture	3	ENGL 2302: British Literature I (3) ENGL 2303: British Literature II (3) ENGL 2304: American Literature I (3) ENGL 2305: American Literature II (3) ENGL 2306: World Literature I (3) ENGL 2307: World Literature II (3) ENGL 2401: First-Year Seminar (3) HIST 2321: World Cultures I (3) HIST 2322: World Cultures II (3) PHIL 2300: Introduction to Ethics (3)
(050) Creative Arts	3	ARTS 1301: Art Appreciation (3) DRAH 1310: Introduction to Theater (3) DRAH 2300: Development of the Motion Picture (3) MUS 1300: Music Appreciation (3)
(060) American History	6	HIST 1301: United States History I (3) HIST 1302: United States History II (3)
(070) Government/Political Science	6	GOVT 2305: Federal Government (3) GOVT 2306: Texas Government (3)
(080) Social & Behavioral Sciences	3	COMM 1307: Introduction to Mass Communication (3) EDUC 1300: Child Psychology (3) PSYC 2301: General Psychology (3) PSYC 2302: Child Psychology (3) PSYC 2303: Human Growth & Development (3) PSYC 1301: Introductory Psychology (3) EDUC 2301: Principles of Educational Research (3) EDUC 2302: Principles of Educational Research (3)
(090) Component Area Options	6	Choose one Speech Course (3) OR SPCH 1315: Public Speaking (3) BOL 1106: Biology for Science Majors I (3) BOL 1107: Biology for Science Majors II (3) BOL 1108: Biology for Non-Science Majors I (3) BOL 1109: Biology for Non-Science Majors II (3) BOL 1110: General Biology (3) BOL 1111: General Biology (3) BOL 2102: Anatomy & Physiology I (3) BOL 2103: Anatomy & Physiology II (3) BOL 2121: Microbiology for Science Majors (3) CHEM 1106: Introductory Chemistry I (3) CHEM 1111: General Chemistry I (3) PHYS 1101: College Physics I (3) PHYS 1102: Static Systems (3) PHYS 1103: Static Systems (3) PHYS 2125: University Physics I (3)
Total Minimum Requirements	42	

TEXARKANA COLLEGE

2500 N. Robinson Rd. | Texarkana, TX 75509
texarkanacollege.edu | 903.823.3456



TEXARKANA COLLEGE

Electrical Technology | Associate of Science

Brandon Washington | Dean of Workforce | brandon.washington@texarkanacollege.edu | 903.823.3323

LIST OF COURSES

ELPT-1225-National Electrical Code I
ELPT-1321-Intro to Electrical Safety & Tools
ELPT-1311-Basic Electrical Theory
ELPT-1403-Technical Calculations
ELPT-1319-Fundamentals of Electricity I
ELPT-1351-Electrical Machines
ELPT-1429-Residential Wiring
ELPT-2437-Electrical Planning & Estimating
EPT-1457-Industrial Wiring
ELPT-2325-National Electrical Code II
ELPT-1420-Fundamentals of Electricity II
ELTN-1343-Electrical Troubleshooting
LEAD-1100-Development with Critical Thinking
SPCH-1315-Public Speaking
ENGL-1301-Composition I
BCIS-1305 OR EDUC-1300-Business/Learning Frame
Math
Social Science
Art/Drama/Music

SEMESTER 1	SEMESTER 3
ELPT-1225	ELPT-1457
ELPT-1321	ELPT-2325
ELPT-1311	ELPT-1343
TECH-1403	ELPT-1420
SEMESTER 2	SEMESTER 4
LEAD-1100	SPCH-1315 (core)
ELPT-1319	ENGL-1301 (core)
ELPT-1351	BCIS-1305 or EDUC-1300 (core)
ELPT-1429	College Level Math (core)
ELPT-2437	Social Science Elective (core)
	Art/Drama/Music Elective (core)

LEARNING OUTCOMES/MARKETABLE SKILLS

Critical Thinking | Teamwork | Communication | Professionalism | Problem Solving | Organization | Time Management | Customer Service

EDUCATIONAL OPPORTUNITIES

B.A.A.S. Texas A&M - Texarkana

CAREER OPPORTUNITIES

Apprentice Electrician | Maintenance Electrician | Journeyman Electrician | Master Electrician | Contractor | Owner of Electric Company

HIGH SCHOOL ENDORSEMENTS

Business and Industry | Multi-Disciplinary

LINKS TO COLLEGES & PROFESSIONAL ORGANIZATIONS:

<http://tamut.edu/Academics/Collages-and-Departments/CASE/Undergraduate-Programs/BAAS/BAAS%20Program.html>

Start Smart. Finish Strong.

Electrical Technology

What do all of our homes, businesses & industries have in common? They all require electricity! In the Electrical Technology program, you'll be trained to wire, troubleshoot and repair electrical systems in residential, commercial and industrial buildings. If you're looking for a solid career that will remain in demand, consider studying electrical technology at Texarkana College.

PROGRAMS AVAILABLE

Associate of Applied Science
1-Year Certificate

WHAT YOU'LL LEARN

Layout & installation of electrical wiring, equipment or fixtures
Connect wires to circuit breakers, transformers & components
Test electrical systems, circuits & fixtures using digital multi-meters
Identify hazards, defects or need of repair in electrical systems, equipment & components

TYPICAL JOBS AFTER COMPLETION

Apprentice Electrician
Journeyman Electrician
Industrial Electrician
Inside Wireman
Journey Wireman
Maintenance Electrician

MEDIAN PAY

\$42,850 per year for electricians in the Texarkana area.

JOB OUTLOOK

Electrician job opportunities are expected to grow by 14% over the next 10 years.

OTHER INTERESTS

If you're interested in Electrical Technology, you may be interested in these other programs in Manufacturing & Technology as well:
Air Conditioning/Heating & Refrigeration Technology (HVAC) | Construction Technology | Electronics Technology/Instrumentation | Industrial Maintenance/Multi-Craft | Welding

In our Career Spotlight Magazine that you can get on campus or online at texarkanacollege.edu/careerspotlight, you'll find an overview of Texarkana College's career and technical programs. Explore our programs and think hard about what to do for the rest of your life. We can help you get there by starting smart and finishing strong! When you're ready, give our Enrollment Services staff a call at (903) 823.3012 or visit texarkanacollege.edu/tour to schedule your campus visit.



TEXARKANA COLLEGE

2500 N. Robison Rd. | Texarkana, TX 75599
texarkanacollege.edu | 903.823.3456

Do not use electronic or fax copy of these college website single-use, disability or age-related programs or services. The website content has been designed to provide students with the most current and accurate information. Please contact the college at (903) 823.3456 for more information.



Structured pathways as a tool for advising

High School Nursing Pathway Example

I'M CURRENTLY A SOPHOMORE

SPRING // SOPHOMORE YEAR
Talk to your counselor to learn what steps you need to take to qualify for early college admission.

FALL // JUNIOR YEAR

- Anatomy & Physiology I & Lab BIOL 2301/2101
- Composition I (Dual Credit) ENGL 1301

SPRING // JUNIOR YEAR

- Anatomy & Physiology II & Lab BIOL 2302/2102
- General Psychology (Dual Credit) PSYC 2301

SUMMER I // AFTER JUNIOR YEAR

- Microbiology & Lab BIOL 2320/2120

SUMMER II // AFTER JUNIOR YEAR

- Fine Arts: Choose from Art Appreciation, Introduction to Theater, or Music Appreciation ARTS 1301, DRAM 1310 OR MUSI 1306

FALL // SENIOR YEAR

- Lifespan Growth & Development (Dual Credit) PSYC 2314

SPRING // SENIOR YEAR
Apply for Associate Degree Nursing program at Texarkana College

FALL // FRESHMAN YEAR OF COLLEGE
Begin nursing school

I'M CURRENTLY A JUNIOR

SPRING // JUNIOR YEAR
Talk to your counselor to learn what steps you need to take to qualify for early college admission.

SUMMER I // AFTER JUNIOR YEAR

- Anatomy & Physiology I & Lab BIOL 2301/2101

SUMMER II // AFTER JUNIOR YEAR

- Anatomy & Physiology II & Lab BIOL 2302/2102

FALL // SENIOR YEAR

- General Psychology (Dual Credit) PSYC 2301
- Composition I (Dual Credit) ENGL 1301

SPRING // SENIOR YEAR

- Lifespan Growth & Development (Dual Credit) PSYC 2314
- Apply for Associate Degree Nursing program at Texarkana College

SUMMER I // AFTER SENIOR YEAR

- Microbiology & Lab BIOL 2320/2120

SUMMER II // AFTER SENIOR YEAR

- Fine Arts: Choose from Art Appreciation, Introduction to Theater, or Music Appreciation ARTS 1301, DRAM 1310 OR MUSI 1306

FALL // FRESHMAN YEAR OF COLLEGE
Begin nursing school

I'M CURRENTLY A SENIOR

SPRING // SENIOR YEAR
Apply for Associate Degree Nursing program at Texarkana College

SUMMER I // AFTER SENIOR YEAR

- Anatomy & Physiology I & Lab BIOL 2301/2101
- General Psychology PSYC 2301

SUMMER II // AFTER SENIOR YEAR

- Microbiology & Lab BIOL 2320/2120
- Lifespan Growth & Development PSYC 2314

FALL // FRESHMAN YEAR OF COLLEGE
Begin nursing school

Student will take Anatomy & Physiology II & Lab (BIOL 2302/2102) during the first semester of nursing school.

This is an example of how a high school student might plan ahead to prepare for nursing school.

Dual credit availability varies by school district, so we'll work with high school students to develop a custom plan that fits their schedule! Attend our Feb. 15 information session or call (903) 823-3351 to get started.

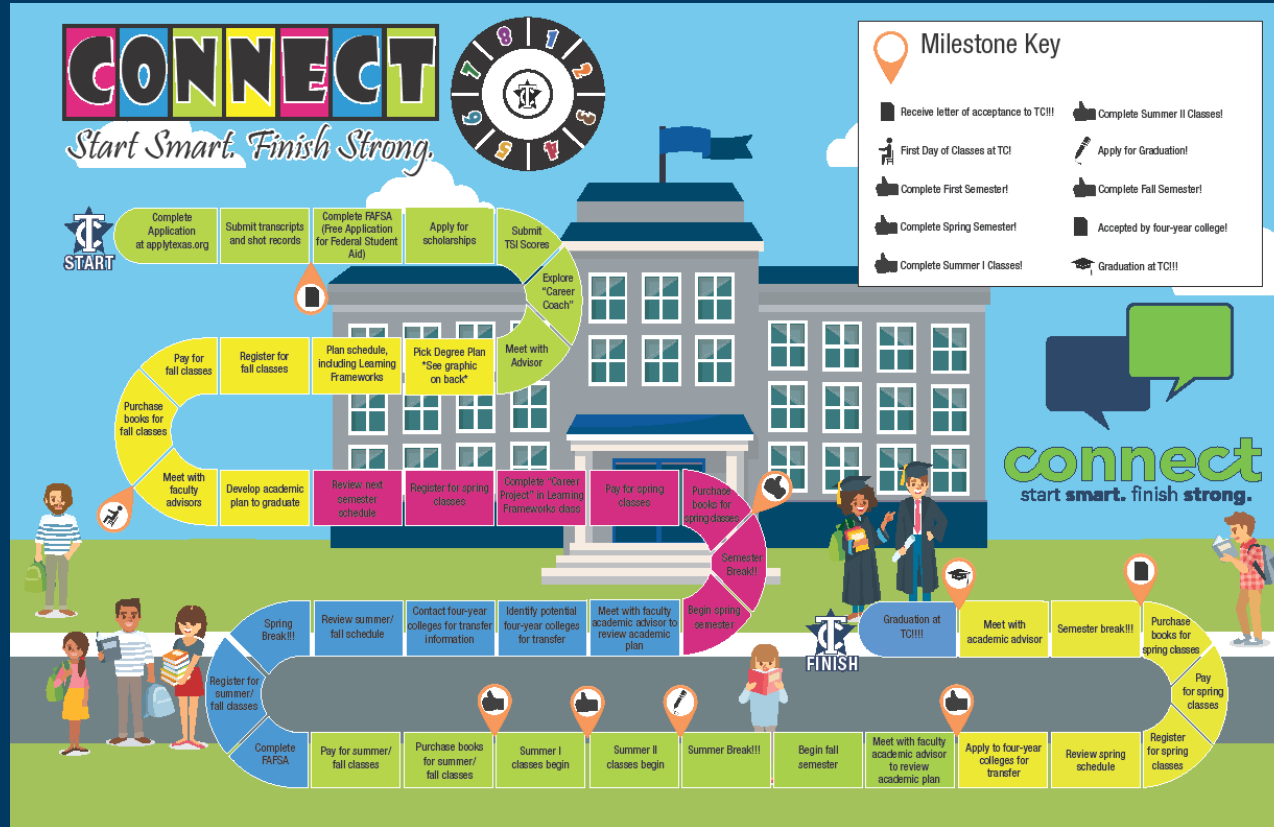


TEXARKANA COLLEGE

Texarkana College is an equal opportunity institution. No person shall be denied admission to or participation in any program or activity on the basis of race, color, national origin, sex, disability, or age. The following persons or organizations have provided financial support for the construction of the building: Texarkana College, 1500 N. Main St., Texarkana, TX 75781 or (903) 823-3351. ©2015 Texarkana College. All rights reserved.



TEXARKANA COLLEGE



Connect Pathways and Webpage Available Online

<https://www.texarkanacollege.edu/current-students/>



Learning Frameworks

All first -time in college students are enrolled as part of their core curriculum.

CCSSE HIGH IMPACT PRACTICES

- ✓ **First Year Experience/Seminar**
- ✓ **Student Success Course**
- ✓ **Learning Community**
- ✓ **Academic Goal Setting and Planning**
- ✓ **Registration Before Classes Begin**

ACTIVITIES, PROJECTS & OUTCOMES

- Learning Theories, Metacognition & Cognitive Development
- Building Community & Motivation for College Success
- Connecting Campus Resources & Student Services
- Goal Setting & Planning
- Career Investigation
- Academic & Degree Planning
- Financial Planning
- Success Strategies & Skills

Texarkana College Learning Frameworks Fall Enrollment:

300

2015
Pilot Year

568

2016
1st Year

548

2017
2nd Year

552

2018
3rd Year



Early Alert System

Timely Intervention



Initiative or Culture Change?



Mission, Core Values & Beliefs

MISSION: ADVANCING OUR COMMUNITY THROUGH ATTAINABLE HIGHER EDUCATION AND LIFELONG LEARNING;

Opportunity

Our highest priority is increasing the number of people with higher education credentials in our region.

Excellence

Excellence in instruction, financial management, and facilities will provide a safe, secure and effective learning environment.

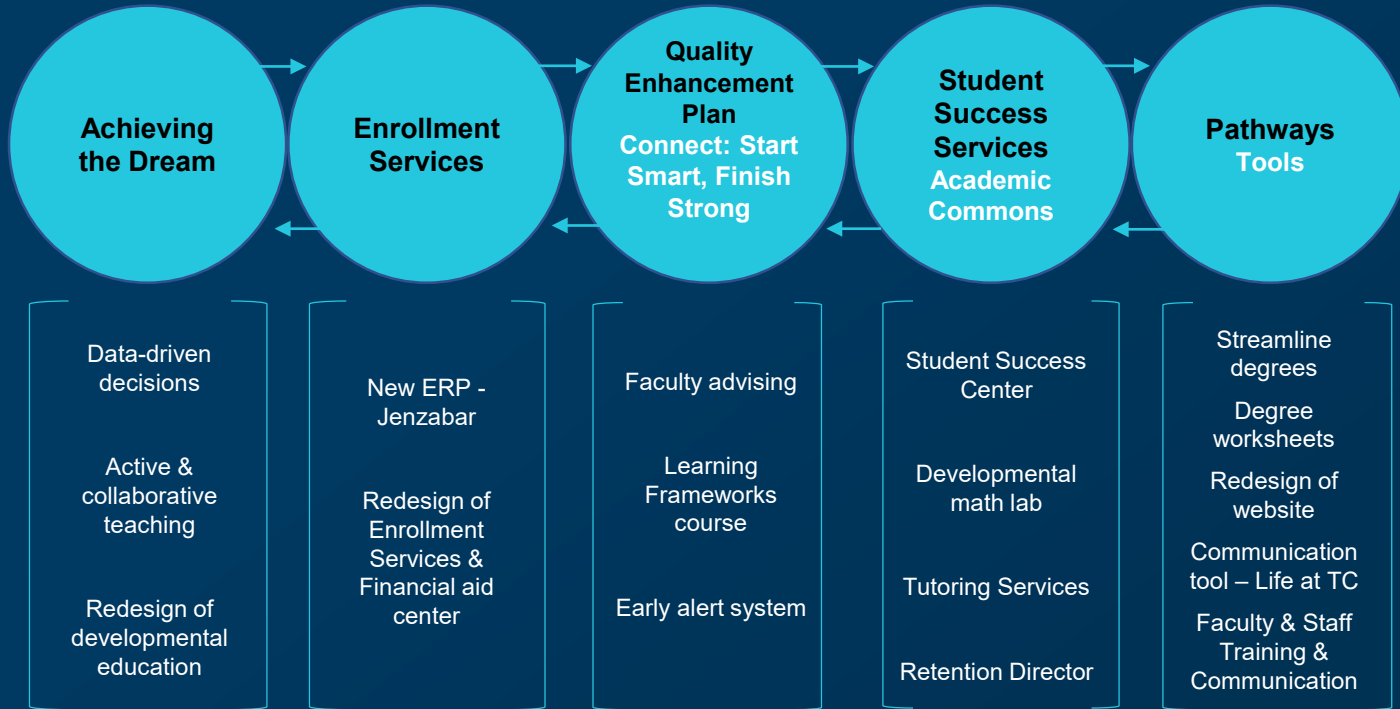
Community

Community trust and support of TC are catalysts for regional economic development and provide a high return on investment.

Success

TC is committed to student success and completion.

CONNECTING THE WORK TOWARD PERSISTENCE & COMPLETION



Texarkana College student to faculty advising ratio:

450:1

Before QEP

49:1

2015 Pilot
Year

28:1

2016 QEP
Update

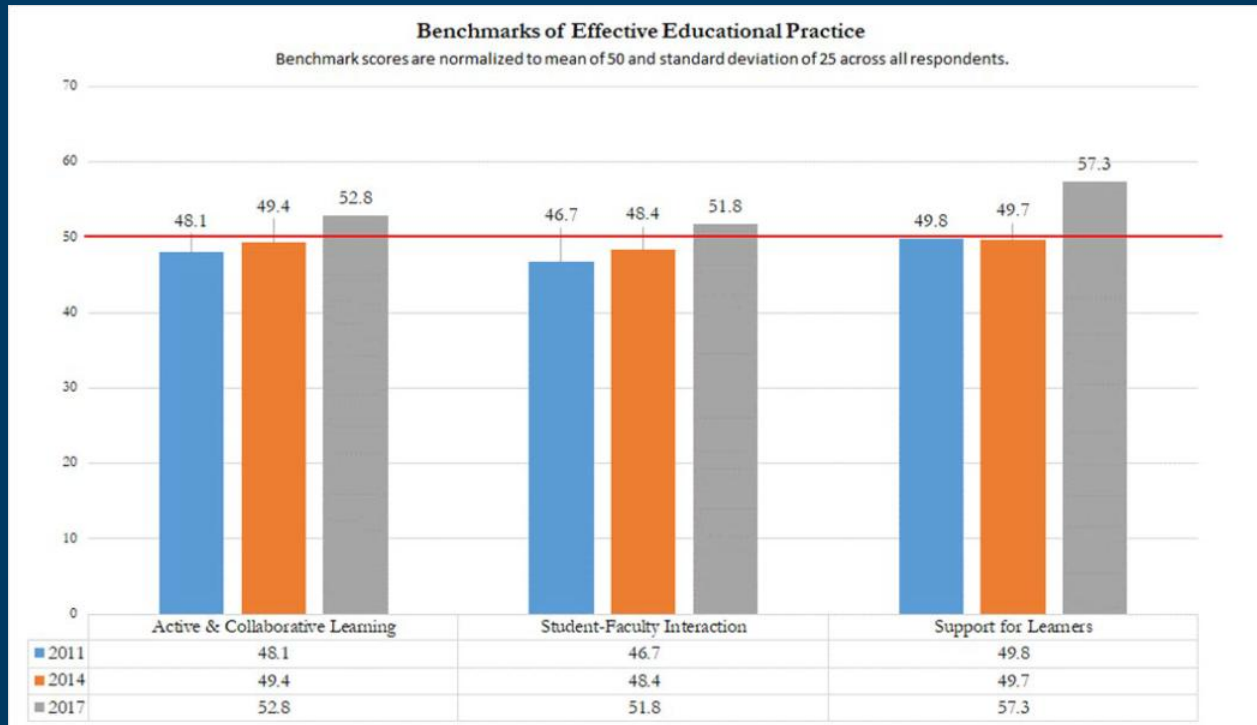
21:1

2019
Spring QEP
Update

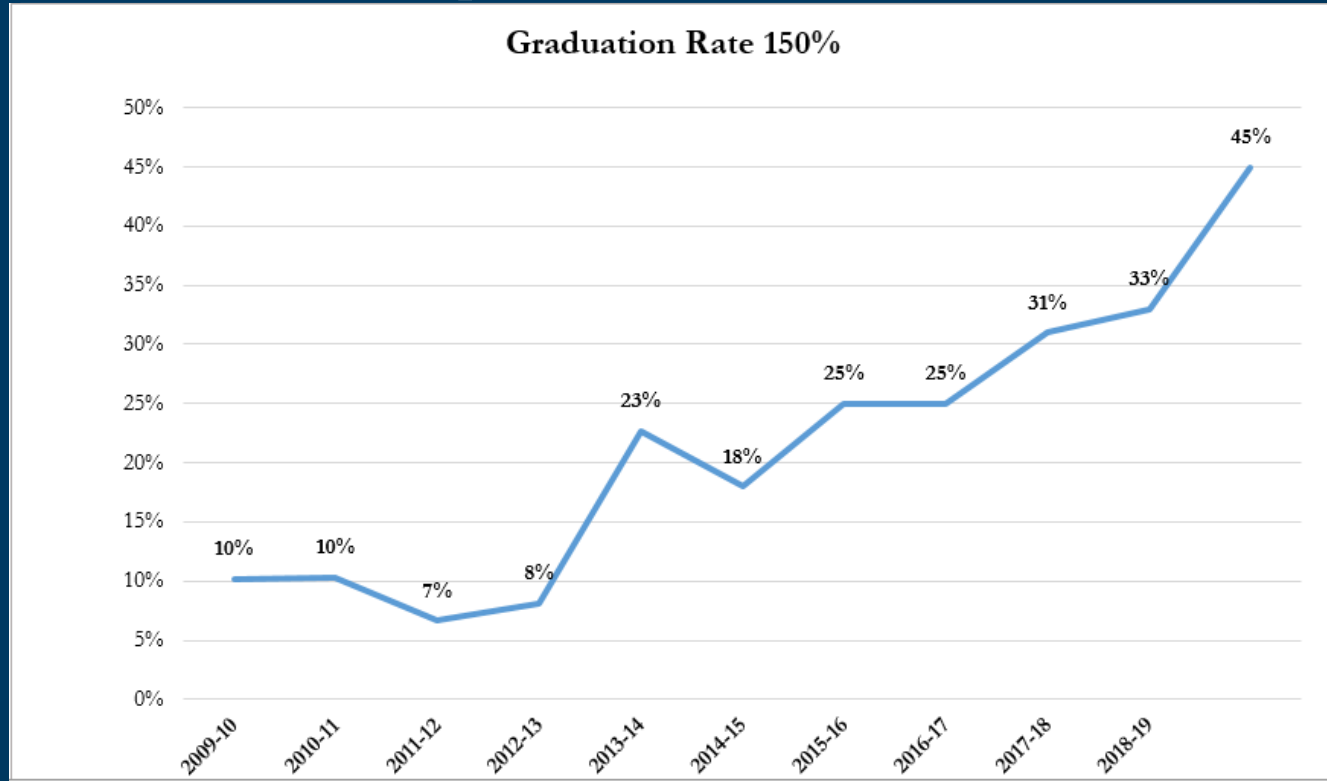
98 unique advisors

MAKING DATA-DRIVEN DECISIONS

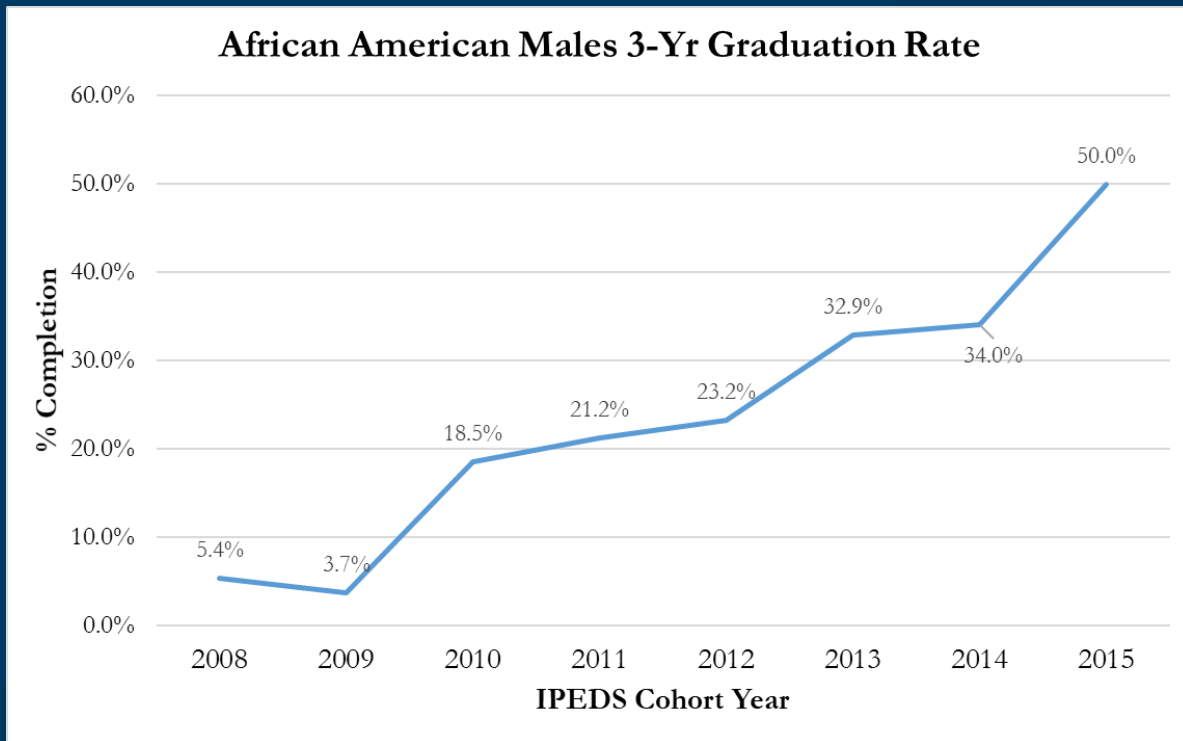
TC Community College Survey of Student Engagements (CCSSE) Benchmark Results



Completion Rates

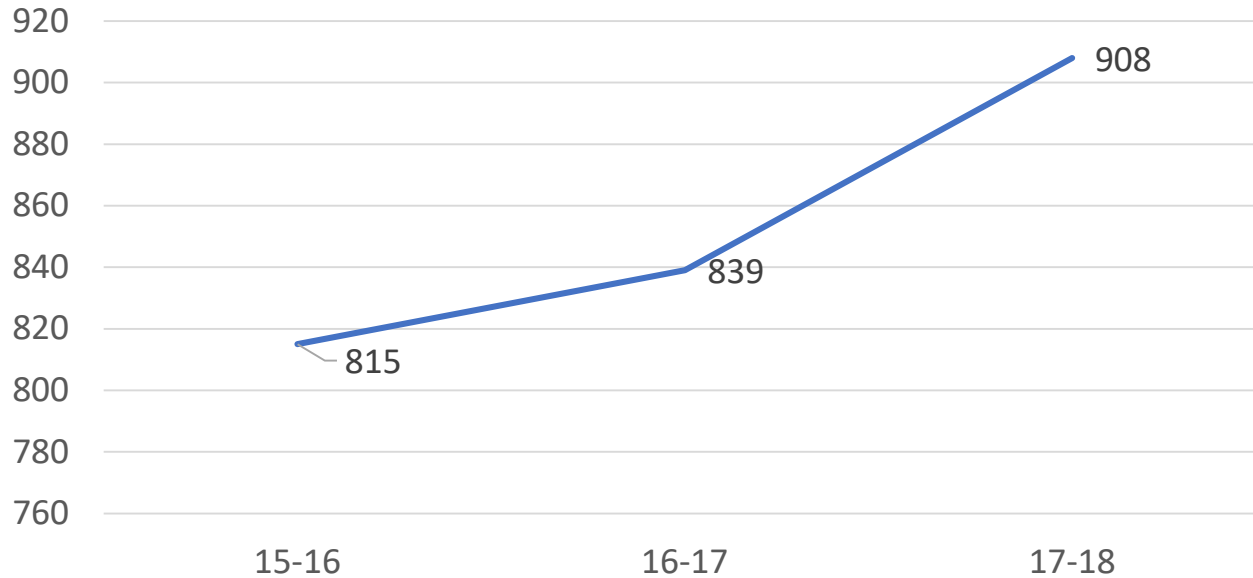


Narrowing the Equity Gaps



IPEDS Student Profile Data

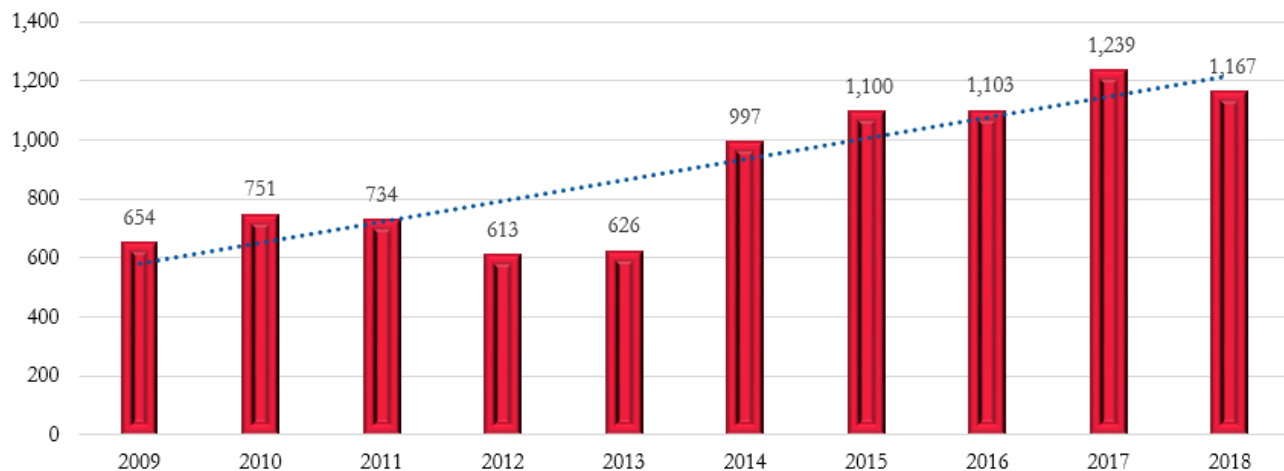
Number of Degrees and Certificates Completed



COMPLETION



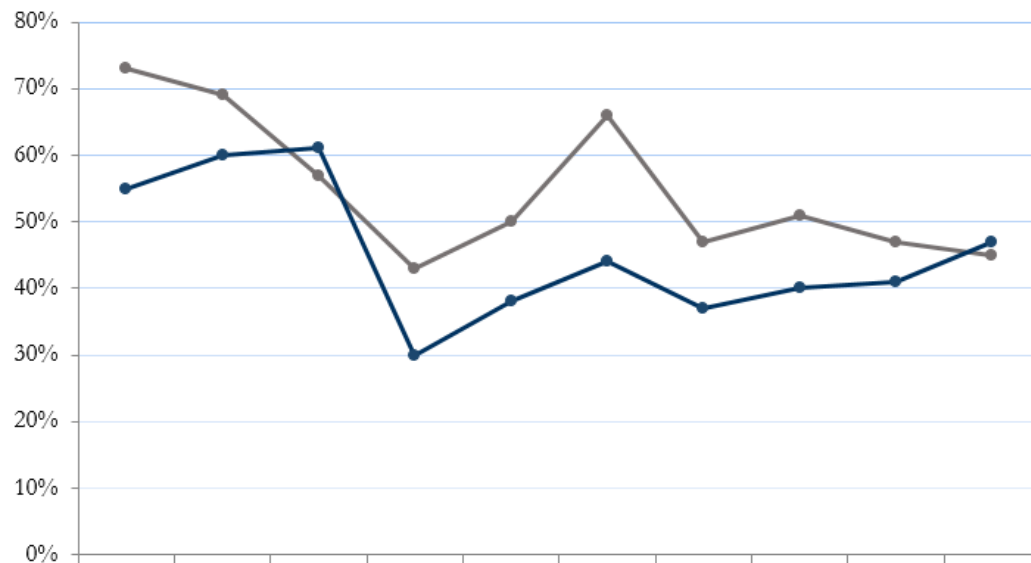
Number of Degrees or Certificates Awarded



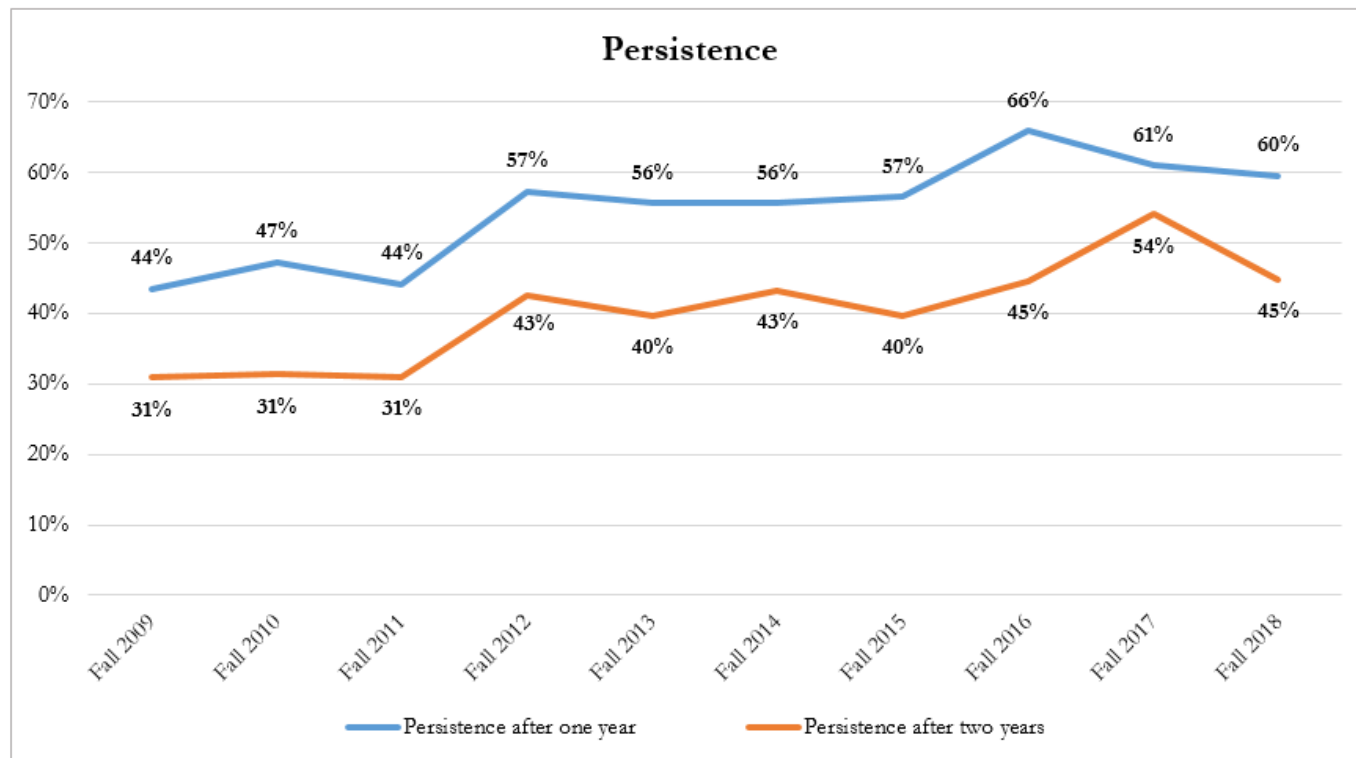
RETENTION RATES



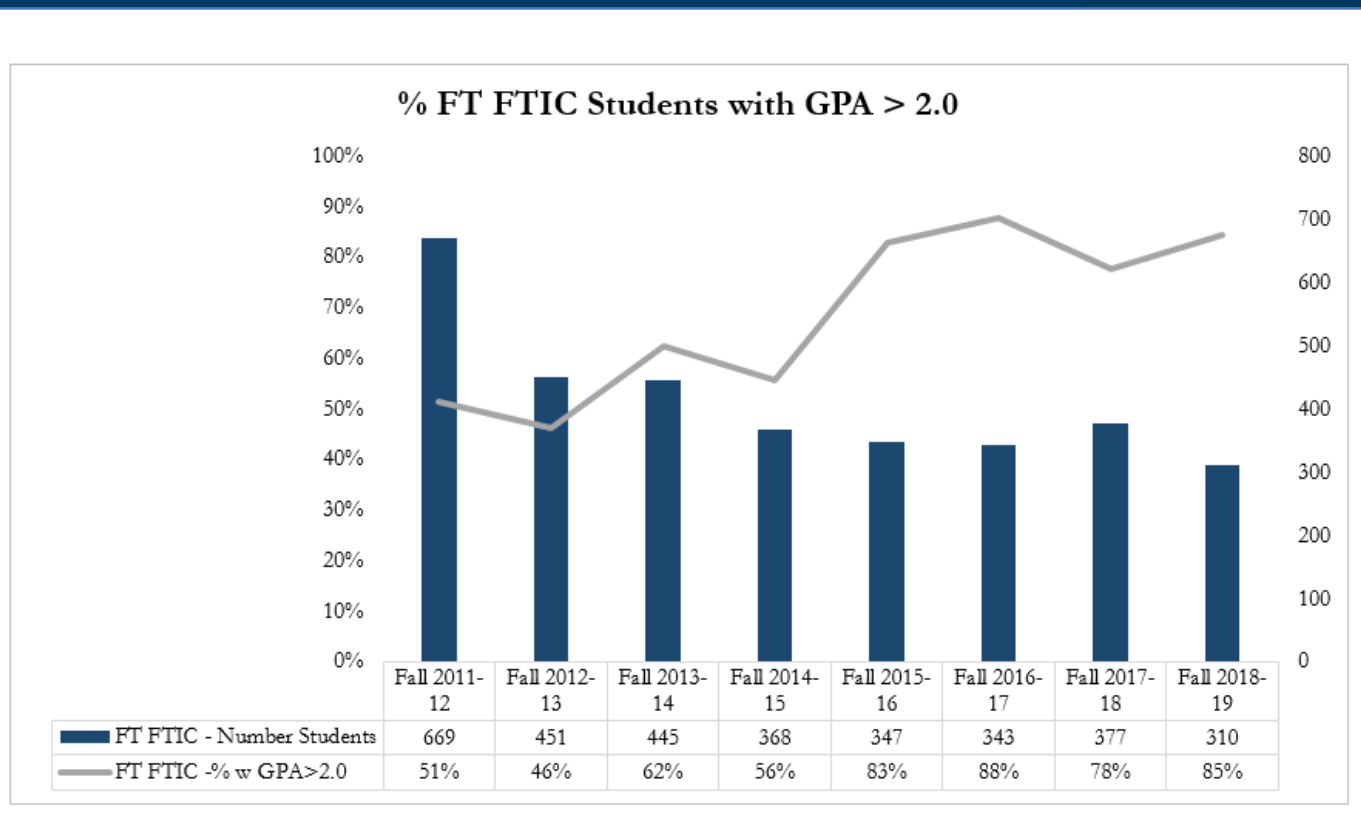
Retention Rates - FT/PT

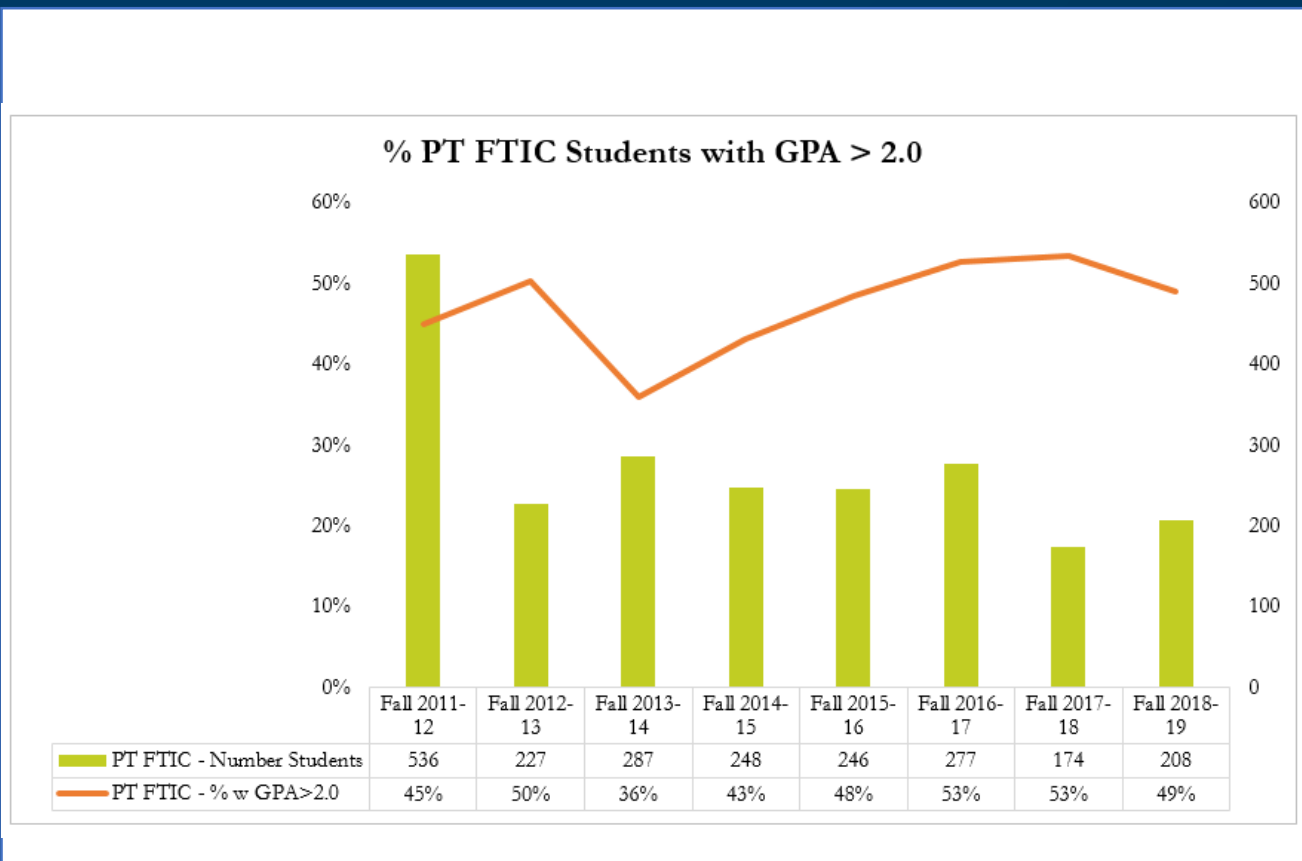


	2009	2010	2011	2012	2013	2014	2015	2016	2017	2018
Retention Rate-FT	73%	69%	57%	43%	50%	66%	47%	51%	47%	45%
Retention Rate-PT	55%	60%	61%	30%	38%	44%	37%	40%	41%	47%



INSTITUTIONAL DATA





Texarkana College ranked **first** among all 50 Texas community colleges in full-time student 3-year completion rates for 2018.

45.8%

completion rate

**Texarkana
College**

22.8%

completion rate

**All Texas
community
colleges**

2012: 8.6%, **2013: 10.8%**, 2014: 18.7%, **2015: 32.7%**, 2016: 32.1%, **2017: 34.7%**

Texarkana College ranked **ninth** among all 50 Texas community colleges in full-time student 4-year completion rates for 2018.

39.2%
completion rate

**Texarkana
College**

30.3%
completion rate

**All Texas
community
colleges**

In 2013, TC was at 13.1% and in 2015, TC was ranked 30th at 24.0%

Texarkana College ranked **fourth** among all 50 Texas community colleges in full-time student 6-year completion rates for 2018.

46.3%
completion rate

**Texarkana
College**

36.9%
completion rate

**All Texas
community
colleges**

In 2013, TC 28.6% and in 2015, TC ranked 50th at 20.6%



It takes students an average of **3.4 years** to graduate from TC, compared to the state average of **4.1 years** .

- ▶ **3.4 years** average time to associate degree
- ▶ **72** average SCH to associate degree
- ▶ **89.4%** certification and licensure pass rate (2017)



At **45.8%**, TC has the highest 3 -year completion rate among Texas community colleges, compared to the state average of **22.8%**.

IN THE COMMUNITY


Achieving the Dream™
Community Colleges Count

2018

LEAH MEYER
AUSTIN AWARD

SPONSORED BY THE KRESGE FOUNDATION



TEXARKANA
COLLEGE

The Leah Meyer Austin Award is Achieving the Dream's highest honor and recognizes institutions that have demonstrated outstanding progress in designing a student-focused culture and aligning institutional strategies to promote student success.

The Active and Cooperative Learning Initiative at Texarkana College has transformed the culture for both students and faculty.... The result: greater course success and persistence rates.

— Jamie Ashby
Associate Professor of Mathematics

Texarkana College is the winner of the 2018 Leah Meyer Austin Award. The college is recognized for significant innovations that have resulted in critical progress including increasing the graduation rate for first-time, full-time students by 21 percentage points from 10% to 31% and an 18 percentage point increase in the graduation rate for Black students from 4% to 22% during the same time period.



Photo courtesy Suzanne H. Irwin
■ Texarkana College President James Henry Russell poses with the 2018 Achieving the Dream award with staff and faculty members in Tennessee.

Texarkana College earns highest national honor

TC is one of only two community colleges to receive the award

By JENNIFER MIDDLETON
Texarkana Gazette

Texarkana College received one of the top community college awards in the nation Tuesday, a recognition leaders say is hard proof of the changes they've made in the college and its culture of success.

Fifteen staff and faculty members are at the Gaylord Hotel in Nashville, Tenn., where they received one of only two prestigious 2018 Achieving the Dream Leah Meyer Austin Awards, the

highest honor awarded to community colleges to recognize outstanding transformational change leading to student success and completion.

The ceremony was held on the first day of the annual Achieving the Dream conference, which will last for three days. This year's award is sponsored by the Kresge Foundation and is accompanied by a \$25,000 prize. Odessa College is the other award recipient.



Photo courtesy Suzanne H. Irwin
■ The Achieving the Dream Leah Meyer Austin Award is the highest honor awarded to community colleges.

"This is a big win for TC faculty and staff. It really shows the results of hard work when the classroom door is shut. It shows we are on the right track."

—James Henry Russell,
Texarkana College president

See TC on Page 8A



SERVING THE GREATER TEXARKANA AREA

Texarkana

\$1.00 | SATURDAY, JANUARY 26, 2019 | texarkanagazette.com

TC's graduation rates are highest in Texas

College's three-year completion rate more than double state average, report shows

By JENNIFER MIDDLETON
Texarkana Gazette

Texarkana College has been ranked as the No. 1 community college in the state for students' three-year graduation rates, according to the Texas Higher Education Coordinating Board.

The report, released last week, shows that TC has a completion rate of 45.8 percent for the group, or cohort, of students which began as first-time students in 2015. The state average for students' three-year graduation rates from community colleges is 22.8 percent.

TC's administrators attribute the high ranking to the college's culture of expecting student success and several programs they have put in place to support students in their academic careers.

"Several things attribute to it," Dr.

See TC on Page 2A



TEXARKANA COLLEGE



Dr. Dixon Boyles

johndixon.boyles@texarkanacollege.edu

Dr. Donna C. McDaniel

donna.mcdaniel@texarkanacollege.edu