

Understanding Students' Experiences Using Data

Dr. Cynthia Ferrell

Vice President,
Texas Success Center,
Texas Association of
Community Colleges

Dr. Rose Martinez

Director,
Trustee Strategies,
Texas Association of
Community Colleges



Texas Success Center



Community College
Association of Texas Trustees

GOAL of the Board of Trustees Institute:

Every participating board will leave the Institute having made a

commitment to that will

actions

ENABLE their CEO and set the

climate and expectation

for institutional change leading toward a

**COMPREHENSIVE
STUDENT SUCCESS
STRATEGY**



Texas Success Center

BOTI Trustees Are Committed to:

- effective governance that contributes to student success, equity, and completion leading to transfer and/or a career with labor market value
- Data-informed governance
- Closing achievement gaps, particularly for low-income students and students of color
- Institutional policy, strategic planning and budgeting that targets student success
- CEO/Board collaboration



Texas Pathways

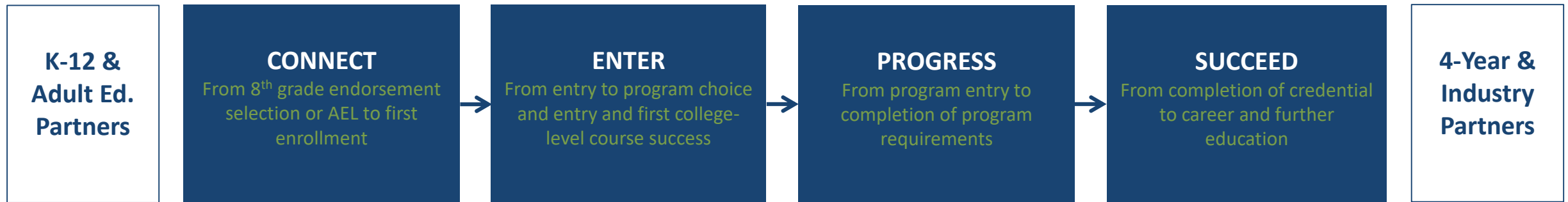
This is not another new initiative
but a new way to think about who we are becoming—
**a changed institution that is systemically better at
serving students.**

**What might boards do differently to help more
students succeed?**



TEXAS PATHWAYS

Systemic Transformation Dedicated to Socioeconomic Mobility



Texas Success Center

A National Movement: Colleges Implementing Guided Pathways



▶ **Texas Success Center**

CCRC Updated April 2019
TSC Updated June 2019

48 Texas Community Colleges are Committed to Texas Pathways



West

Amarillo
El Paso
Frank Phillips
Howard
Midland
Odessa
South Plains
Western Texas



South

Alamo
Coastal Bend
Del Mar
Laredo
South Texas
Southwest Texas
Texas Southmost
Victoria



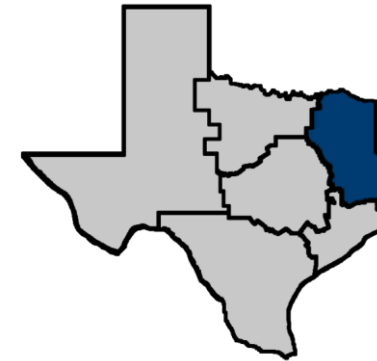
Central

Austin
Blinn
Central Texas
Hill
McLennan
Navarro
Temple



Southeast

Alvin
Brazosport
College of the Mainland
Galveston
Houston
Lee
Lone Star
San Jacinto
Wharton



East

Angelina
Kilgore
Northeast Texas
Panola
Paris
Texarkana
Trinity Valley
Tyler

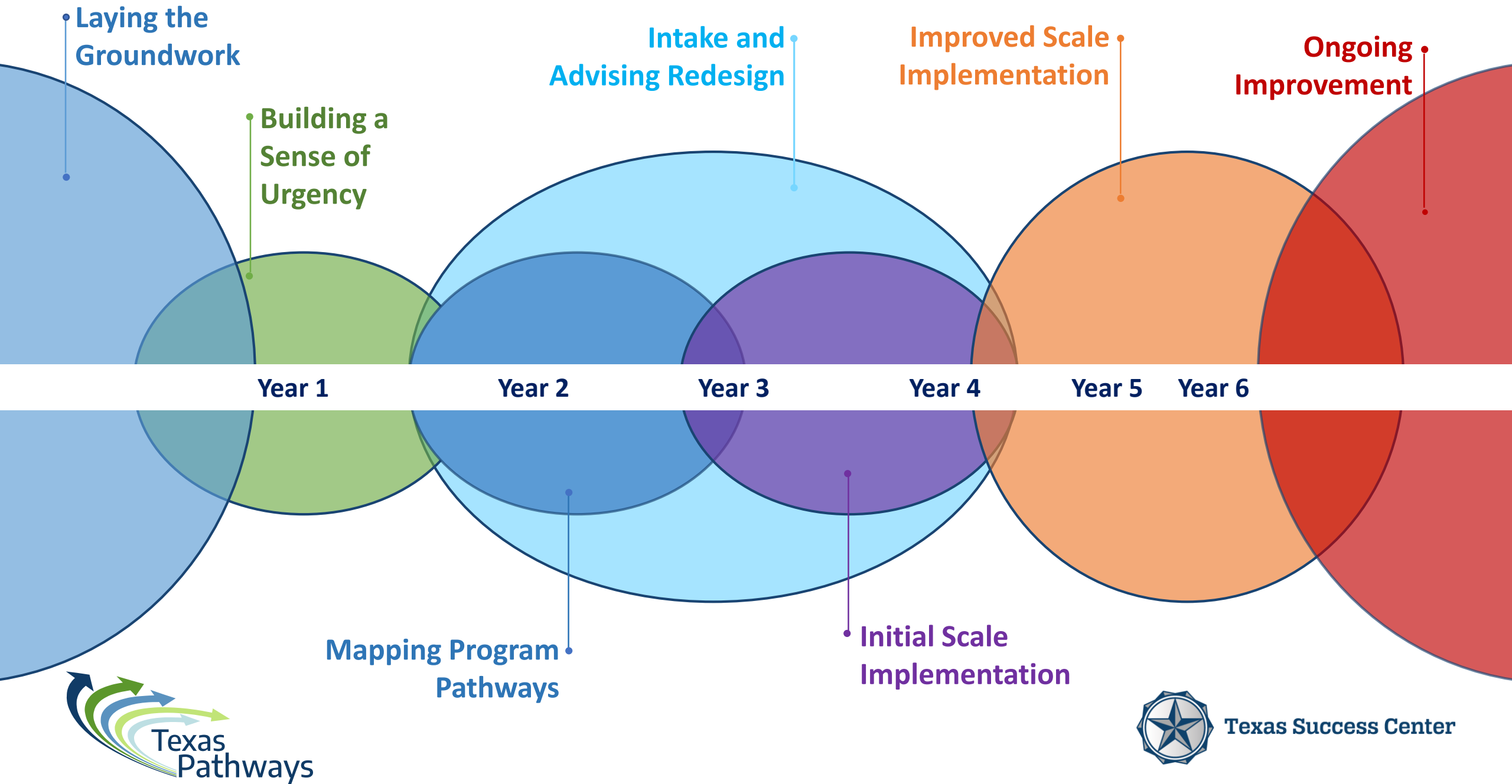


North

Collin
Dallas
Grayson
North Central
Ranger
Tarrant County
Weatherford
Vernon



Texas Success Center



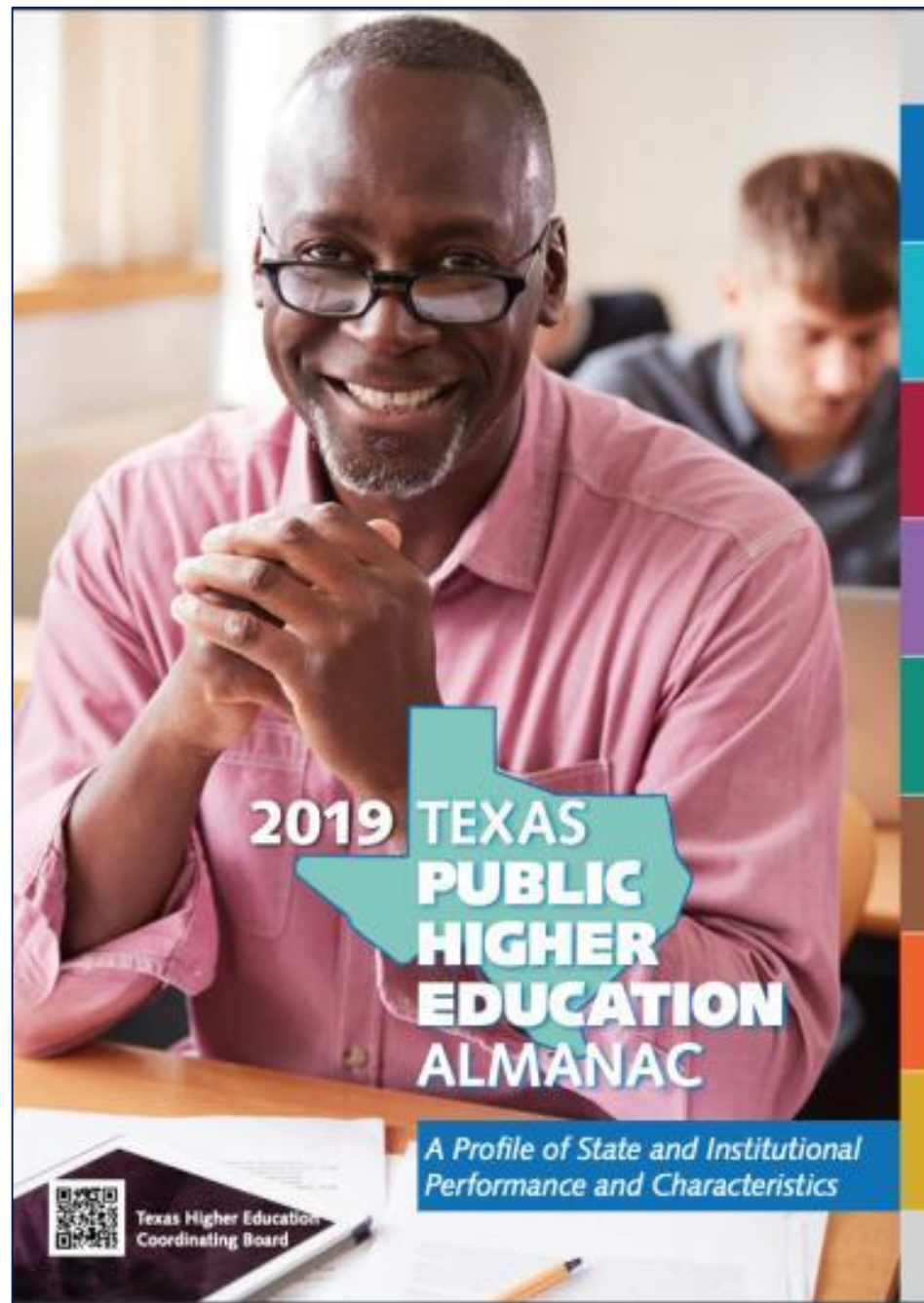
A Data Walk

How well are we serving Texas community college students?



Texas Success Center

2019 Texas Public Higher Education Almanac



Community College
Association of Texas Trustees



Texas Success Center

Institutional Comparisons: Two-Year Public Institutions

2-year public institution	Average tuition & fees	Enrollment by race/ethnicity, fall 2018						Degrees & certificates awarded by race/ethnicity, FY 2018						Student characteristics, fall 2018					
		Total	African American	Hispanic	White	Other	International	Total	African American	Hispanic	White	Other	International	% enrollment change 2013-18	% part-time	% full-time	% academic program	% technical program	% credit students receiving Pell Grants
Alamo Community College District	\$2,760	52,468	8.2%	63.6%	22.3%	5.6%	0.3%	9,041	8.1%	63.9%	23.0%	4.4%	0.6%	2.7%	71.5%	28.5%	80.2%	19.8%	33.4%
Alamo CCD—Campus-Level Data	SEE PAGES 47-49																		
Alvin Community College	\$1,998	5,645	12.5%	35.5%	42.1%	8.1%	1.7%	1,232	9.4%	29.7%	51.1%	8.5%	1.3%	8.7%	77.0%	23.0%	76.9%	23.1%	16.0%
Amarillo College	\$2,670	9,844	5.9%	41.0%	45.9%	6.8%	0.4%	2,134	5.8%	40.3%	47.0%	6.2%	0.7%	-7.6%	70.3%	29.7%	60.7%	39.3%	50.8%
Angelina College	\$2,730	4,819	13.8%	28.2%	54.3%	3.6%	0.0%	942	14.8%	26.5%	54.6%	4.1%	0.0%	-12.3%	69.5%	30.5%	51.5%	48.5%	37.4%
Austin Community College	\$2,550	38,362	8.7%	37.2%	44.0%	9.8%	0.3%	4,407	7.4%	33.3%	48.2%	10.5%	0.6%	-0.6%	83.0%	17.0%	70.8%	29.2%	20.9%
Blinn College District	\$3,630	19,113	11.6%	23.3%	58.3%	6.4%	0.5%	2,292	9.1%	18.8%	66.6%	4.8%	0.7%	4.6%	53.4%	46.6%	87.0%	13.0%	24.1%
Brazosport College	\$2,715	4,304	7.8%	42.1%	45.7%	4.2%	0.2%	1,269	9.8%	35.2%	49.1%	5.8%	0.2%	4.2%	80.8%	19.2%	62.4%	37.6%	15.1%
Central Texas College	\$2,700	9,976	28.7%	26.9%	34.4%	9.3%	0.7%	2,255	29.3%	24.2%	37.3%	8.5%	0.8%	-5.5%	75.4%	24.6%	73.3%	26.7%	27.4%
Cisco College	\$3,810	3,358	9.9%	26.1%	57.4%	5.9%	0.7%	693	6.6%	25.0%	58.9%	8.1%	1.4%	-6.1%	56.8%	43.2%	72.8%	27.2%	36.1%
Clarendon College	\$3,030	1,633	6.7%	2.4%	50.9%	37.8%	2.0%	301	5.6%	6.3%	58.1%	28.9%	1.0%	34.6%	64.5%	35.5%	83.5%	16.5%	31.0%
Coastal Bend College	\$2,646	4,633	2.1%	73.8%	20.1%	3.9%	0.1%	887	2.5%	70.5%	21.2%	2.7%	3.2%	32.2%	74.3%	25.7%	61.1%	38.9%	30.6%
College of the Mainland Community College District	\$1,773	4,673	16.2%	31.0%	47.0%	5.8%	0.0%	891	19.0%	32.0%	45.6%	3.3%	0.2%	11.6%	76.1%	23.9%	65.5%	34.5%	20.7%
Collin County Community College District	\$1,520	32,846	12.7%	21.1%	48.7%	15.5%	2.0%	3,488	11.7%	18.4%	50.4%	14.1%	5.4%	19.2%	72.0%	28.0%	64.1%	35.9%	16.9%
Dallas County Community College District	\$1,770	72,918	20.6%	41.0%	17.4%	10.7%	10.3%	11,571	19.5%	34.6%	22.3%	12.9%	10.7%	13.0%	82.6%	17.4%	72.0%	28.0%	26.0%
Dallas CCCD—Campus-Level Data	SEE PAGES 55-58																		
Del Mar College	\$3,170	11,867	3.2%	67.4%	23.4%	3.6%	2.4%	2,025	2.9%	61.9%	28.7%	3.3%	3.3%	13.0%	78.0%	22.0%	69.3%	30.7%	31.6%
El Paso Community College District	\$3,750	28,241	1.9%	85.1%	7.1%	4.3%	1.6%	4,428	2.0%	84.3%	8.0%	2.4%	3.3%	0.4%	74.1%	25.9%	88.3%	11.7%	41.9%
Frank Phillips College	\$2,966	1,452	4.3%	38.8%	50.4%	6.0%	0.4%	180	3.3%	36.1%	56.7%	0.6%	3.3%	27.5%	65.2%	34.8%	82.4%	17.6%	24.5%
Galveston College	\$2,050	2,423	15.9%	39.7%	36.9%	6.7%	0.8%	635	15.6%	41.1%	35.6%	6.5%	1.3%	13.8%	70.7%	29.3%	68.9%	31.1%	30.6%

INTRODUCTION

NATIONAL

60X30TX

ST



Overall 8th Grade Cohort Completion

100 of 8th graders enrolled
in fall 2007 ...



78 of the 100 graduated
from public high school



54 of the 100 enrolled
in higher education

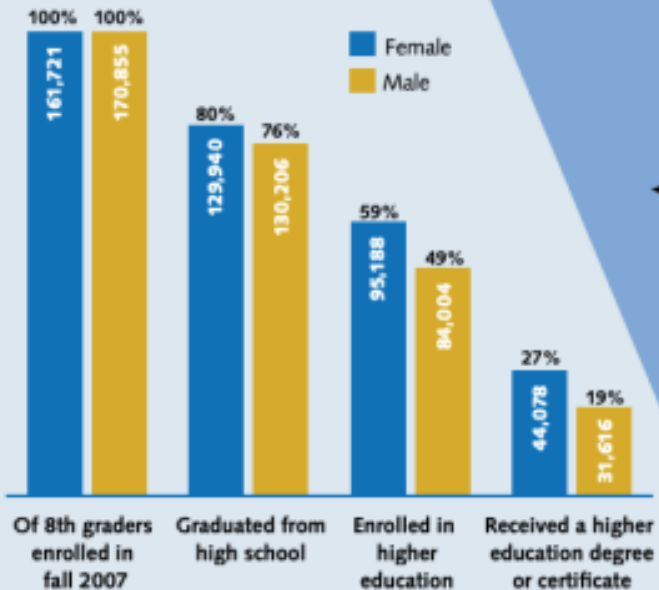


23

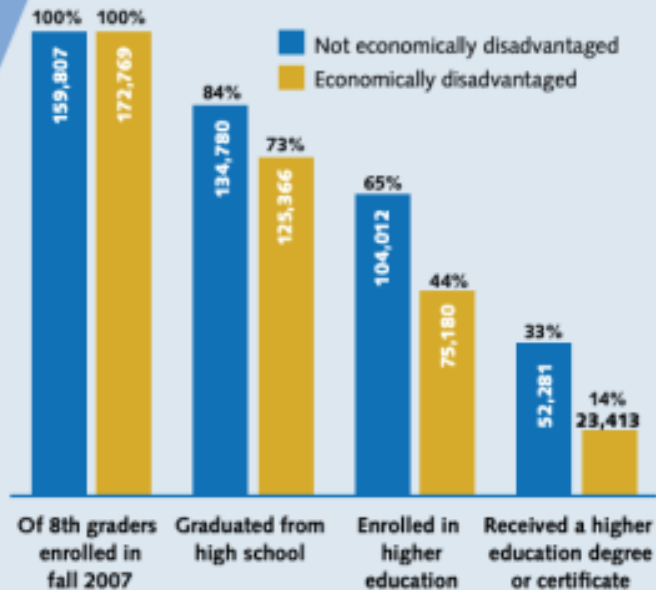


of the 100
received a
higher
education
degree or
certificate

8th Grade Cohort Completion by Gender



8th Grade Cohort Completion by Economic Status



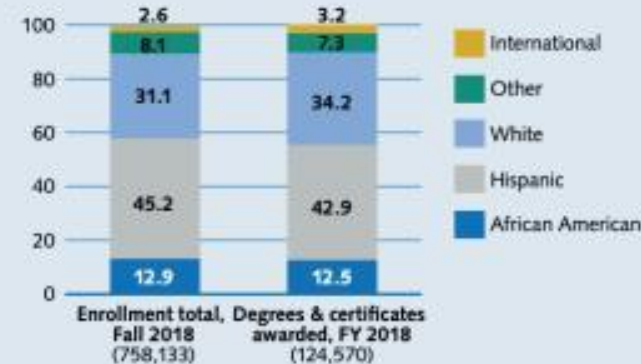
Graduation Rate of 8th Grade Cohort p. 14



Texas Success Center



PERCENT STUDENT POPULATION BY RACE/ETHNICITY



STUDENT CHARACTERISTICS

Total enrollment	5.3%
% change 2013–18	
% part-time	76.7%
% full-time	23.3%
% academic program	75.0%
% technical program	25.0%
% credit students receiving Pell Grants	30.3%

COMPLETION MEASURES

Average time to associate degree (yrs)	4
Average SCH to associate degree	84

GRADUATION RATES

	Full-time	Part-time
3-year	23.3%	11.7%
4-year	30.5%	18.5%
6-year	36.9%	22.6%
<i>Fall 2015, 3-year cohort</i>		
Dev. ed.	17.8%	
Non-dev. ed.	28.2%	

DUAL CREDIT MEASURES

Dual credit as % of total enrollment in fall 2018	23.0%
<i>Fall 2013 FTIC dual credit cohort</i>	
% persist 1 year	85.5%
% earned bacc. in 4 years or fewer	36.6%
% earned bacc. or assoc. in 4 years or fewer	40.1%

GRADUATE SUCCESS

<i>Academic programs</i>	
% employed and/or enrolled	90.0%
% employed	27.2%
% enrolled in 4-yr or 2-yr	25.1%
% employed and enrolled	37.7%
<i>Technical programs</i>	
% employed and/or enrolled	88.8%
% employed	59.2%
% enrolled in 4-yr or 2-yr	9.8%
% employed and enrolled	19.8%

DEBT OF GRADUATES

Average student debt	\$16,414
Native student debt	\$15,503
Parent debt portion	\$565
Transfer student debt	\$18,626
% students with debt	30.6%

DEVELOPMENTAL EDUCATION

<i>Fall 2015 FTIC dev. ed. cohort</i>	
<i>Math</i>	
Below math standard	59,719
TSI obligation met (% of total)	44.5%
Completed college course (% of total)	24.3%
<i>Reading</i>	
Below reading standard	38,178
TSI obligation met (% of total)	60.0%
Completed college course (% of total)	46.5%
<i>Writing</i>	
Below writing standard	36,457
TSI obligation met (% of total)	55.6%
Completed college course (% of total)	39.5%

TRANSFER STUDENTS

All transfers	27,292
Transfer cohort	118,151
Transfer rate	23.1%

FACULTY

Total	31,917
% full-time faculty	41.4%
% SCH taught by full-time faculty	65.9%
Student-faculty ratio	19:1

Statewide Profile p. 46

Institutional Profiles pp. 47-87



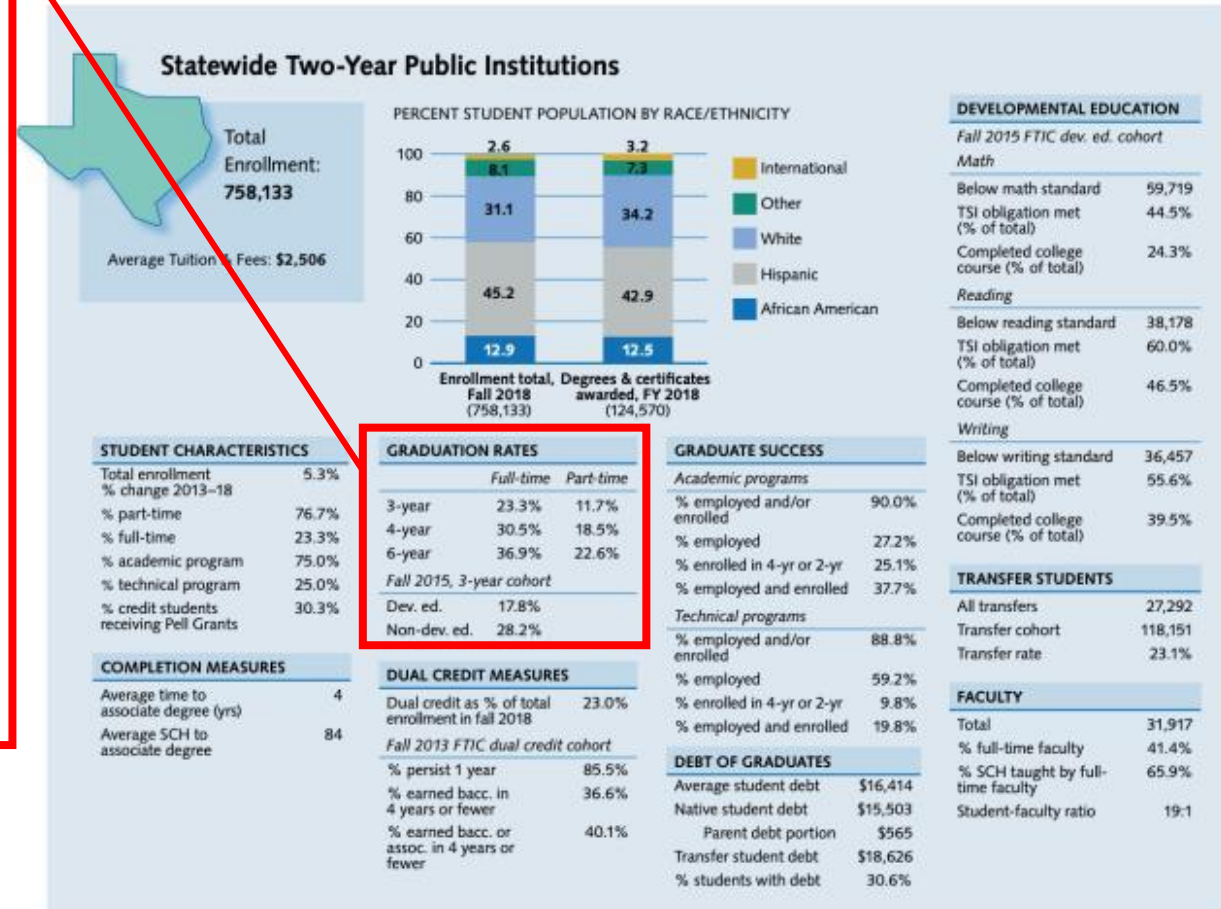
GRADUATION RATES

Full-time Part-time

3-year	23.3%	11.7%
4-year	30.5%	18.5%
6-year	36.9%	22.6%

Fall 2015, 3-year cohort

Dev. ed.	17.8%
Non-dev. ed.	28.2%



Community College
Association of Texas Trustees



Texas Success Center

COMPLETION MEASURES

Average time to
associate degree (yrs)

4

Average SCH to
associate degree

84

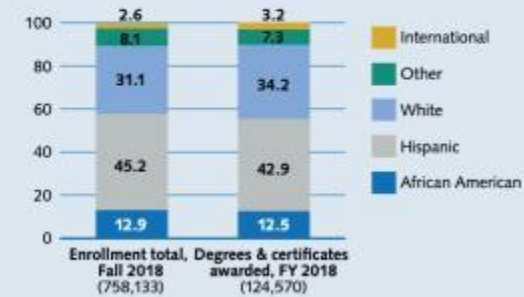


Statewide Two-Year Public Institutions

Total
Enrollment:
758,133

Average Tuition & Fees: \$2,506

PERCENT STUDENT POPULATION BY RACE/ETHNICITY



STUDENT CHARACTERISTICS

Total enrollment	5.3%
% change 2013-18	
% part-time	76.7%
% full-time	23.3%
% academic program	75.0%
% technical program	25.0%
% credit students receiving Pell Grants	30.3%

COMPLETION MEASURES

Average time to associate degree (yrs)	4
Average SCH to associate degree	84

GRADUATION RATES

	Full-time	Part-time
3-year	23.3%	11.7%
4-year	30.5%	18.5%
6-year	36.9%	22.6%
Fall 2015, 3-year cohort		
Dev. ed.	17.8%	
Non-dev. ed.	28.2%	

DUAL CREDIT MEASURES

Dual credit as % of total enrollment in fall 2018	23.0%
Fall 2013 FTIC dual credit cohort	
% persist 1 year	85.5%
% earned bacc. in 4 years or fewer	36.6%
% earned bacc. or assoc. in 4 years or fewer	40.1%

GRADUATE SUCCESS

Academic programs	
% employed and/or enrolled	90.0%
% employed	27.2%
% enrolled in 4-yr or 2-yr	25.1%
% employed and enrolled	37.7%
Technical programs	
% employed and/or enrolled	88.8%
% employed	59.2%
% enrolled in 4-yr or 2-yr	9.8%
% employed and enrolled	19.8%

DEBT OF GRADUATES

Average student debt	\$16,414
Native student debt	\$15,503
Parent debt portion	\$565
Transfer student debt	\$18,626
% students with debt	30.6%

DEVELOPMENTAL EDUCATION

Fall 2015 FTIC dev. ed. cohort

Math	
Below math standard	59,719
TSI obligation met (% of total)	44.5%
Completed college course (% of total)	24.3%
Reading	
Below reading standard	38,178
TSI obligation met (% of total)	60.0%
Completed college course (% of total)	46.5%

Writing

Below writing standard	36,457
TSI obligation met (% of total)	55.6%
Completed college course (% of total)	39.5%

TRANSFER STUDENTS

All transfers	27,292
Transfer cohort	118,151
Transfer rate	23.1%

FACULTY

Total	31,917
% full-time faculty	41.4%
% SCH taught by full-time faculty	65.9%
Student-faculty ratio	19:1



Community College
Association of Texas Trustees



Texas Success Center

DEBT OF GRADUATES

Average student debt	\$16,414
Native student debt	\$15,503
Parent debt portion	\$565
Transfer student debt	\$18,626
% students with debt	30.6%

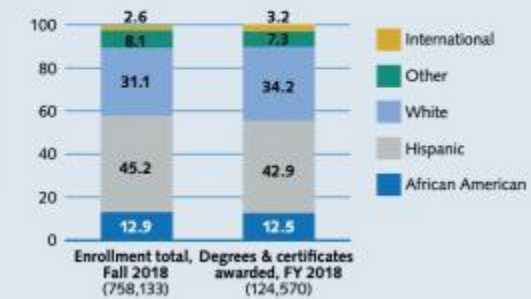


Statewide Two-Year Public Institutions

Total Enrollment:
758,133

Average Tuition & Fees: \$2,506

PERCENT STUDENT POPULATION BY RACE/ETHNICITY



STUDENT CHARACTERISTICS

Total enrollment	5.3%
% change 2013-18	
% part-time	76.7%
% full-time	23.3%
% academic program	75.0%
% technical program	25.0%
% credit students receiving Pell Grants	30.3%

COMPLETION MEASURES

Average time to associate degree (yrs)	4
Average SCH to associate degree	84

GRADUATION RATES

	Full-time	Part-time
3-year	23.3%	11.7%
4-year	30.5%	18.5%
6-year	36.9%	22.6%
Fall 2015, 3-year cohort		
Devel. ed.	17.8%	
Non-devel. ed.	28.2%	

DUAL CREDIT MEASURES

Dual credit as % of total enrollment in fall 2018	23.0%
Fall 2013 FTIC dual credit cohort	
% persist 1 year	85.5%
% earned bacc. in 4 years or fewer	36.6%
% earned bacc. or assoc. in 4 years or fewer	40.1%

GRADUATE SUCCESS

Academic programs	
% employed and/or enrolled	90.0%
% employed	27.2%
% enrolled in 4-yr or 2-yr	25.1%
% employed and enrolled	37.7%
Technical programs	
% employed and/or enrolled	88.8%
% employed	59.2%
% enrolled in 4-yr or 2-yr	9.8%
% employed and enrolled	19.8%

DEBT OF GRADUATES

Average student debt	\$16,414
Native student debt	\$15,503
Parent debt portion	\$565
Transfer student debt	\$18,626
% students with debt	30.6%

DEVELOPMENTAL EDUCATION

Fall 2015 FTIC dev. ed. cohort

Math

Below math standard	59,719
TSI obligation met (% of total)	44.5%
Completed college course (% of total)	24.3%

Reading

Below reading standard	38,178
TSI obligation met (% of total)	60.0%
Completed college course (% of total)	46.5%

Writing

Below writing standard	36,457
TSI obligation met (% of total)	55.6%
Completed college course (% of total)	39.5%

TRANSFER STUDENTS

All transfers	27,292
Transfer cohort	118,151
Transfer rate	23.1%

FACULTY

Total	31,917
% full-time faculty	41.4%
% SCH taught by full-time faculty	65.9%
Student-faculty ratio	19:1



Community College
Association of Texas Trustees



Texas Success Center

Table Discussion Questions

1. What data facts about your college's students were significant?
2. How does your college's mission statement reflect your board's commitment to student success?
3. What is something you learned from a colleague about boards' effective use of data?



Texas Pathways

This is not another new initiative
but a new way to think about who we are becoming—
**a changed institution that is systemically better at
serving students.**

**What might boards do differently to help more
students succeed?**



SAVE THE DATE:

Board of Trustees Institute 2020



March 23-25 | Lost Pines, TX



Texas Success Center

tacc.org/tsc | success@tacc.org