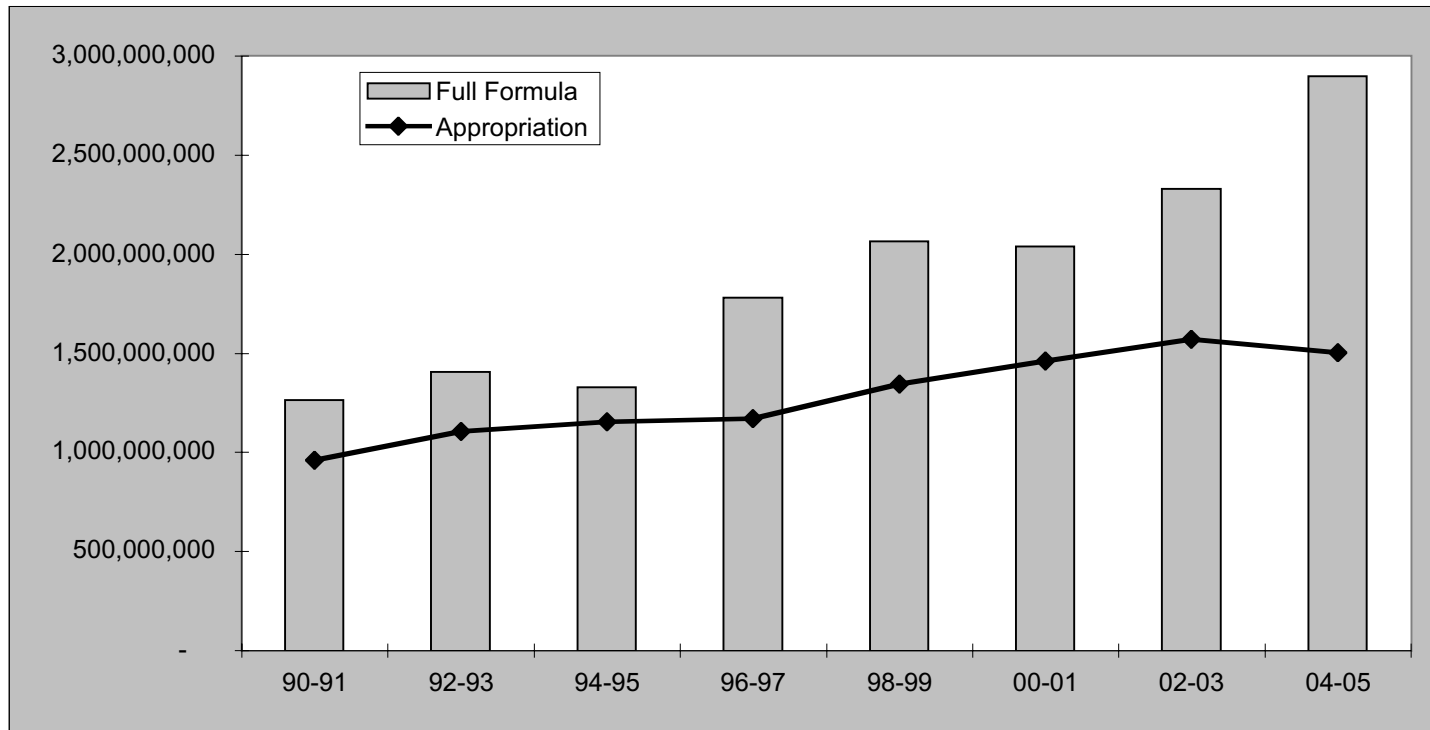


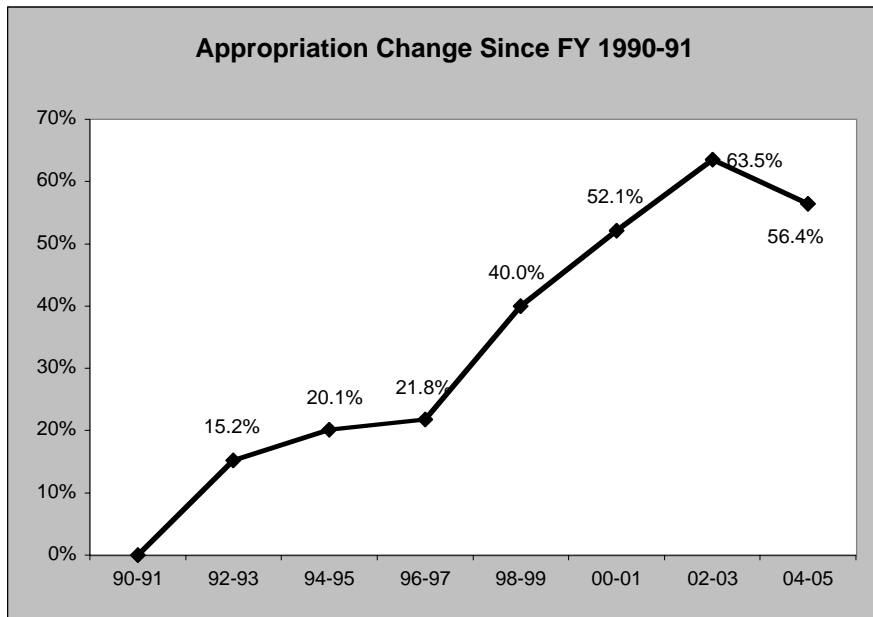
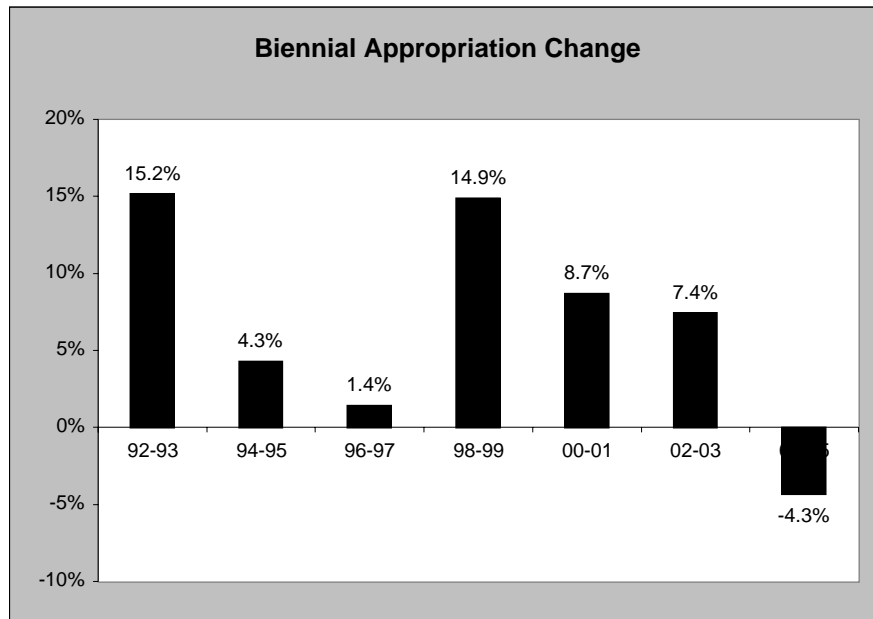
**Community College Formula Appropriation
FY 1990-91 to FY 2004-05**

Biennium	Full Formula	Formula Appropriation	% of Formula
FY 1990-91 (71st)	1,262,678,050	959,848,172	76.0%
FY 1992-93 (72nd)	1,403,420,982	1,105,694,608	78.8%
FY 1994-95 (73rd)	1,327,449,865	1,153,046,891	86.9%
FY 1996-97 (74th)	1,780,430,279	1,169,388,914	65.7%
FY 1998-99 (75th)	2,064,285,863	1,343,456,041	65.1%
FY 2000-01 (76th)	2,037,870,456	1,460,395,664	71.7%
FY 2002-03 (77th)	2,328,185,806	1,569,157,590	67.4%
FY 2004-05 (78th)	2,895,975,842	1,501,275,023	51.8%



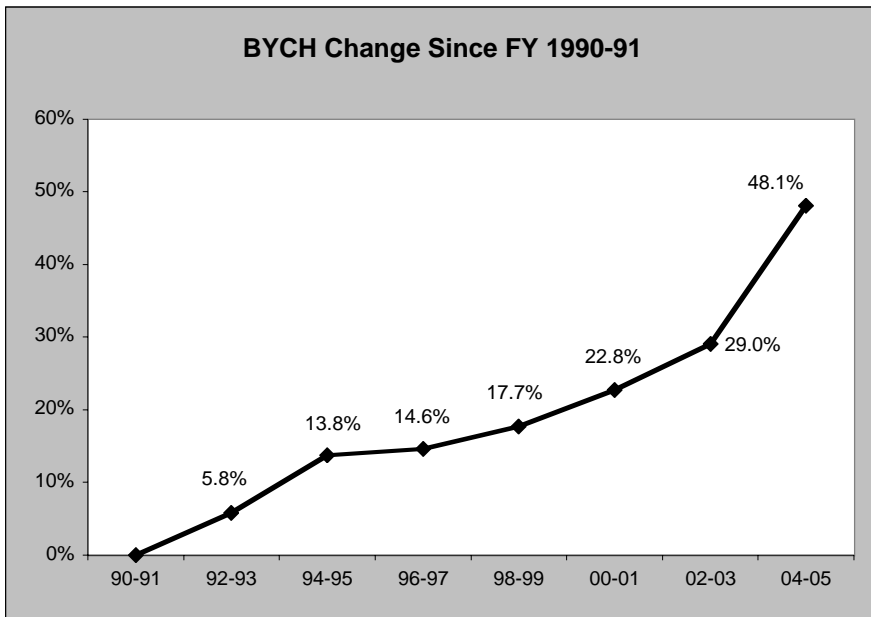
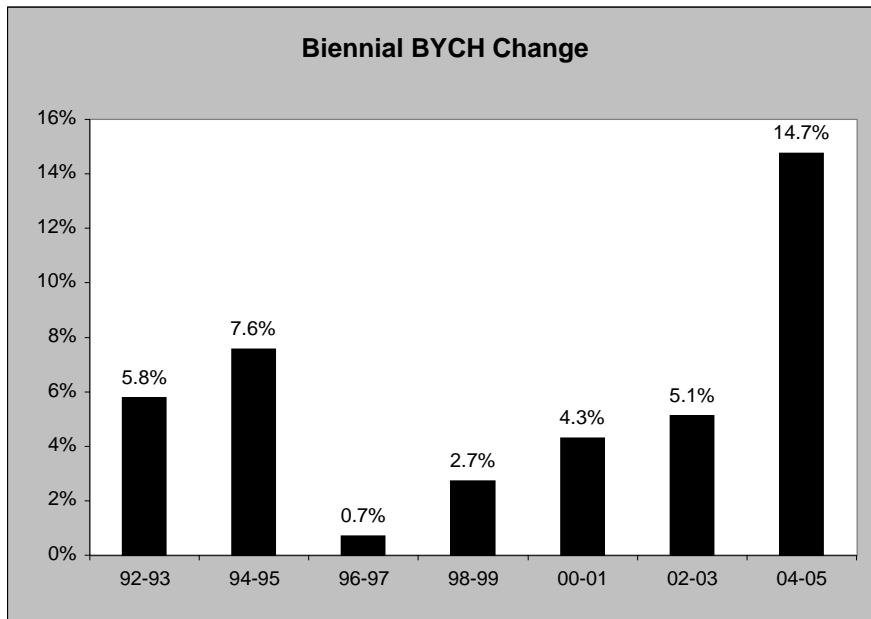
Formula Appropriation, FY 1990-91 to FY 2004-05
Texas Public Community Colleges

Biennium	Formula Appropriation	% Difference	
		biennial	since 90
FY 1990-91 (71st)	959,848,172		
FY 1992-93 (72nd)	1,105,694,608	15.2%	15.2%
FY 1994-95 (73rd)	1,153,046,891	4.3%	20.1%
FY 1996-97 (74th)	1,169,388,914	1.4%	21.8%
FY 1998-99 (75th)	1,343,456,041	14.9%	40.0%
FY 2000-01 (76th)	1,460,395,664	8.7%	52.1%
FY 2002-03 (77th)	1,569,157,590	7.4%	63.5%
FY 2004-05 (78th)	1,501,275,023	-4.3%	56.4%



Base Year Contact Hours (BYCH), FY 1990-91 to FY 2004-05
 Texas Public Community Colleges

Biennium	Base Year Contact Hours	% Difference	
		biennial	since 90
FY 1990-91 (71st)	157,716,106		
FY 1992-93 (72nd)	166,821,907	5.8%	5.8%
FY 1994-95 (73rd)	179,449,167	7.6%	13.8%
FY 1996-97 (74th)	180,714,187	0.7%	14.6%
FY 1998-99 (75th)	185,643,998	2.7%	17.7%
FY 2000-01 (76th)	193,608,536	4.3%	22.8%
FY 2002-03 (77th)	203,528,018	5.1%	29.0%
FY 2004-05 (78th)	233,548,284	14.7%	48.1%



Formula Appropriation/BYCH, FY 1990-91 to FY 2004-05
Texas Public Community Colleges

Biennium	Appropriation/ BYCH	% Difference	
		biennial	since 90
FY 1990-91 (71st)	6.09		
FY 1992-93 (72nd)	6.63	8.9%	8.9%
FY 1994-95 (73rd)	6.43	-3.1%	5.6%
FY 1996-97 (74th)	6.47	0.7%	6.3%
FY 1998-99 (75th)	7.24	11.8%	18.9%
FY 2000-01 (76th)	7.54	4.2%	23.9%
FY 2002-03 (77th)	7.71	2.2%	26.7%
FY 2004-05 (78th)	6.43	-16.6%	5.6%

