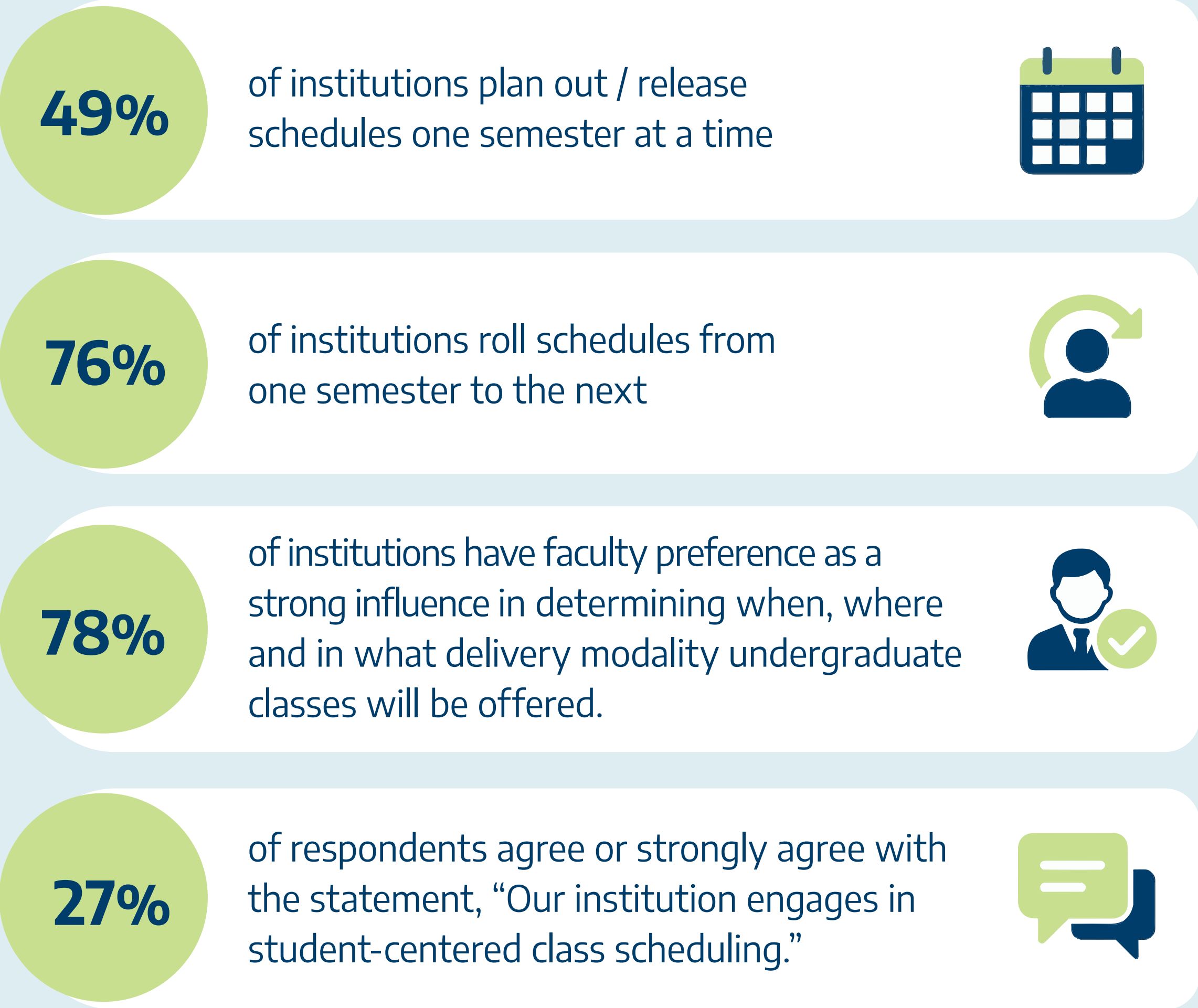


Creating a Student-Centered Schedule Utilizing Needs Assessment and Gaps Analysis

Problem Statement: Student schedule needs are often incongruent with faculty scheduling preferences, which hinders effective use of facilities and reduces the likelihood of student persistence and completion. An additional problem is identifying an ideal course schedule that satisfies the entire college community.

Data: AACRAO surveyed 340 institutions of higher education - public and private, offering undergraduate and graduate degrees, from across the United States.



Resource: AACRAO. A Comprehensive View of Undergraduate-Class-Scheduling Practice, Policy, Data Use and Technology. AACRAO, 2022.

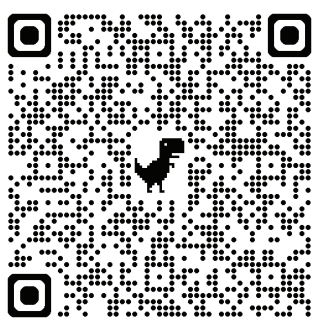
Reforms Proposed:

In order to solve the issue of creating a student-centered schedule while also supporting faculty and institutional needs, a two-step approach is required.

- 1


Needs Assessment
 - Survey all stakeholders
 - Use survey results to create focus group questions
- 2


Gaps Analysis
 - Identify similarities and differences in stakeholder needs.
 - Create course schedule




Scan here to access related materials

Expected Outcomes:

- 

Stakeholder engagement with the scheduling process
- 

Better understanding of student needs
- 

Improved scheduling, which will improve retention and time to completion

Timeline:

