

Translating Opportunity Texas: A Strategy of Talent Strong Texas Pathways

February 14, 2025

Made possible by support from Ascendium Education Group



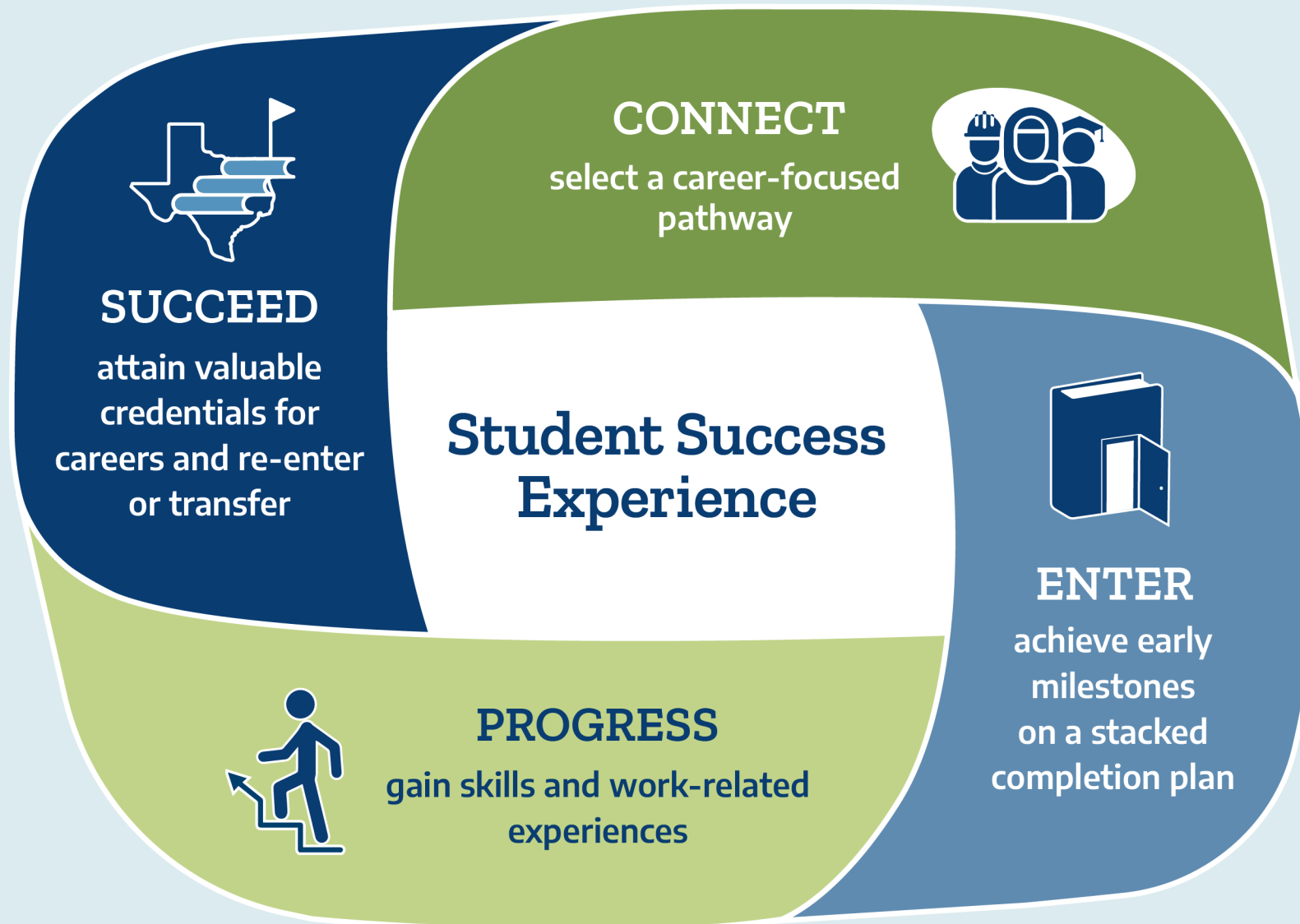
Texas Success Center



Welcome



Talent Strong Texas Pathways Framework



Success

Accomplishment and
Self-Fulfillment Needs
Students' Career Goals
Socio-Economic Mobility

Belonging
& Wellness

Psychological,
Basic & Safety Needs



Translating Opportunity Texas

Translating Opportunity Texas is a coalition of partners working with Texas colleges to establish effective English as a Second Language practices, within their Talent Strong Texas pathways framework for institutional reform, from adult education to credentials of value, including industry-based certifications, certificates, and degrees leading to careers with living wages.



Anne Bartlett Brazosport College



Project Background & Purpose



Background

In 2023, we started a journey to better understand postsecondary pathways for Multilingual Learners of English (MLE) students.

We wanted to know:

- What do we know about the postsecondary MLE population?
- What are the postsecondary outcomes for MLE students?
- What federal, state, and institutional policies impact MLE students in postsecondary?
- What postsecondary program structures, designs, and practices impact MLE students?
- Which supports do postsecondary MLE students, faculty, and staff need?



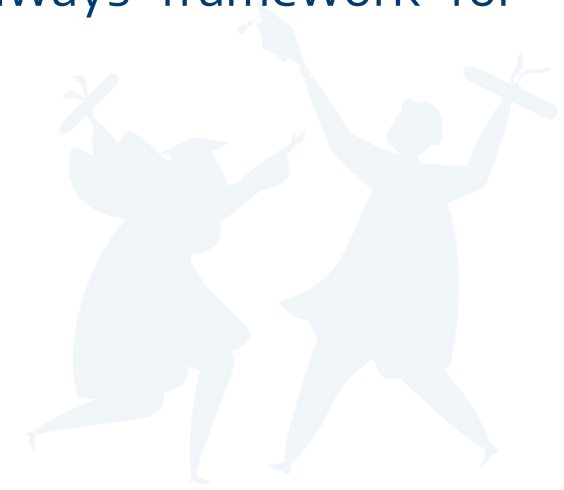
Check out the paper!

- Action-oriented recommendations
 - Call to Action
 - Things you can do immediately
- 50-state policy scan
- Literature review and extensive reference list
- Stakeholder interviews
- Glossary

Purpose

Translating Opportunity Texas will:

- Support all community colleges in Texas in establishing effective English as a Second Language (ESL) pathways from adult education to credentials of value, including industry-based certifications, certificates, and degrees leading to careers with living wages
- Co-develop and refine processes and tools to redesign and accelerate ESL pathways to students' completion and career success within their Talent Strong Texas Pathways framework for institutional reform
- Inform activities for a second cohort of Texas community colleges
- Contribute to the scaling of best practices across the state



Objectives

Participating colleges will, throughout this project:

- Provide leadership for **MLE-focused institutional reform** for Texas community colleges
- Provide **clear and accessible credential pathways** from ESL to credential completion and career success
- Prepare faculty and staff to **help students navigate the pathways** by implementing early opportunities for students to connect with programs, enroll in continuing education or credit courses, and build a sense of purpose and belonging
- Implement **student-centered, holistic supports** within and outside of the classroom



Project Partners



Texas Success Center



Cohort 1 Colleges



Amarillo College[®]



**El Paso
Community
College**






TEXAS SUCCESS CENTER
manage and coordinate state effort within the Texas Pathways framework



INFORMED BY:
Research (WE/SRS)
Student Advisory Groups (WE)
Student Focus Groups (CCCSE)
Case Studies (WE)



Institutions develop and implement plans to improve **ESL pathways**



SUPPORTED BY:
Technical Assistance (SRS)
Resources (SRS/WE)
Professional Learning (WE)
Peer Learning (Cohort)



Refine processes, resources, tools; publish research



Empower local leaders and advocates



STATE & NATIONAL IMPACT
Improve outcomes for students
Raise awareness and inspire change
Support action in colleges in Texas and nationally
Lay foundation for ongoing research

Project Activities & Updates



Technical Assistance



Major Activities for Participating Colleges

Cohort 1 colleges are here



Curricular Maps
Communications Review
Student Services Review
Policy Review



Create Action Plan



Implement Action Plan &
Monitor Progress

Sample ESL Curricular Map

College A ML Course Map

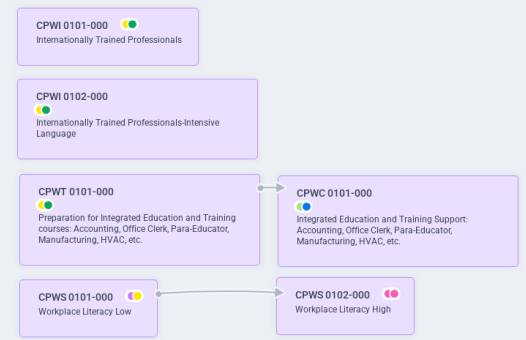
Color Key

- Adult Education
- Continuing Education Units
- Pre-College
Credit does not count towards program of study or major
- College-level
Credit does count towards program of study or major
- Corequisite

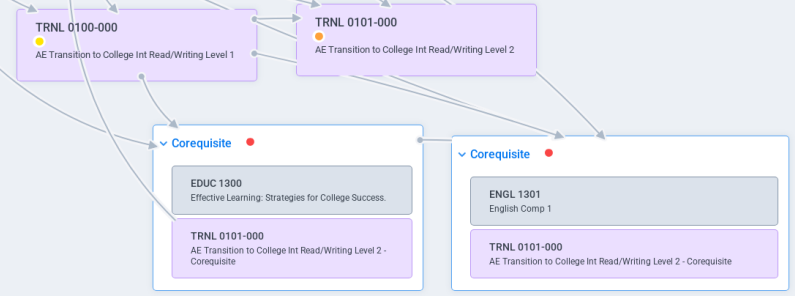
College A AE Map



CPW Courses



AEL Courses



Placement Requirements

BEST Plus 88-361 88-452 362-427 428-452 452-564 453-484 >453 >564 525-564 >525	BEST Literacy 0-20 0-40 21-52 41-78 53-63 64-67 >53 53-67 w. 60 or below 40-64 >60 <67	TSIA2 ELAR 910 - 929 930 and above 940 and above	CASAS Assessment Reading 0-249+ Math 0-225 Math 226-236+
---	--	--	--

Major Outputs for the Field

Learnings from the technical assistance activities will inform the following publications:

- **Institutional assessment** for institutions to gain an understanding of the landscape for students who are multilingual learners of English (MLE) on their campuses
- **Implementation guide** for institutions seeking to accelerate ESL pathways and support MLE student success



Research Agenda



Spring 2025 Focus Groups



**El Paso
Community College**

**Houston
Community College**

February 4

March 5

March 6

April 8

Brazosport College

Amarillo College



Questions about Focus Groups?

Contact Dr. Coral Noonan-Terry
at noonan@cccse.org

Case Studies and Student Advisory Council



Case Studies

Conducted by Dr. Emily Suh, Texas State University

Opportunity to better understand students' journeys and experiences over time.

Colleges agree to:

- Facilitate IRB approval consistent with institutional policies
- Identify candidates for the study
- Facilitate interviews with faculty and staff
- Allow observations of classes, advising, tutoring and other supports, with student permission



Student Advisory Group

Facilitated by Haley McNamara, Wested

Student representatives of each college collaborate to provide input on college plans and project activities.

WestEd principles for engaging with students

1. Reciprocal – Students directly benefit from engaging in the process
2. Meaningful – Student voice has a significant impact on the work
3. Sustained – Students must be involved in thought ways over a period of time





Questions about Case Studies or Student Advisory Group?

Case studies: Dr. Emily Suh, emily.suh@txstate.edu

Student Advisory Group: Haley McNamara, hmcnama@wested.org

Professional Learning Modules



Professional Learning Modules

The TOT Professional Learning Modules are designed for ESL departments and faculty to use to support a community of learning.

2 modules currently under development, 2 modules developed in 2025-2026. Will be available to all colleges once completed

Benefit for cohort colleges:

- Cohort colleges get first access the professional learning modules
- Cohort faculty have the opportunity to serve as reviewers and help shape the final product



Resource Hub



Resource Hub

Hub for tools and resources to support colleges.

tacc.org/tsc/translating-opportunity-texas

Currently has case-making materials including student videos.

Resources will be built out over time.



The screenshot shows the Texas Success Center website page for "Translating Opportunity Texas". The page features a navigation bar with links for ABOUT, OUR STRATEGY, KNOWLEDGE DEVELOPMENT, LEADERSHIP ACADEMY, MLE, and EVENTS. The main content area includes the title "Translating Opportunity Texas" and a description of the coalition's mission. A video player shows a smiling woman with the caption "I feel like I'm family." Below the video is a section titled "Current Landscape" with a detailed paragraph about a 2023 report. At the bottom, there are four colored boxes representing different data sources: Qualitative Data from Interviews, English as a Second Language (ESL) Course Maps Analysis, Literature Overview, and 50 State Policy Scan. The footer of the page includes logos for the Texas Success Center, CCCSE, Student-Ready Strategies, and WestEd.

TEXAS SUCCESS CENTER
Translating Opportunity Texas

WestEd
WestEd.org

Translating Opportunity Texas is a coalition of partners working with Texas colleges to establish effective English as a Second Language practices, within their Talent Strong Texas Pathways framework for institutional reform, from adult education to credentials of value, including industry-based certifications, certificates, and degrees, leading to careers with living wages.

WestEd is a nonpartisan research, development, and service agency that works with partners across the field of education - including students and communities - to promote excellence, achieve equity, and improve learning for children, youth, and adults.

Student-Ready STRATEGIES

Student-Ready Strategies envisions a world in which colleges and universities believe every student can succeed and purposely evolve to ensure they do. To achieve this vision, SRS partners, plans, and problem-solves with postsecondary institutions as they evolve to become more student-ready. We have worked alongside hundreds of institutions to diagnose challenges, implement evidence-based solutions, and improve student success.

CCCSE
INSIGHTS THAT MATTER

CCCSE, a service and research initiative, assists institutions and policymakers in using information to promote improvements in student learning, persistence, and attainment by delivering "aha" moments about the student experience based on Insights that matter. Since its founding in 2001, more than 70% of the nation's community colleges have participated multiple times in a CCCSE survey.

TEXAS SUCCESS CENTER

Qualitative Data from Interviews

English as a Second Language (ESL) Course Maps Analysis

Literature Overview

50 State Policy Scan

Upcoming Opportunities: Concurrent Session TSTP #5 Cohort 2



Questions?

