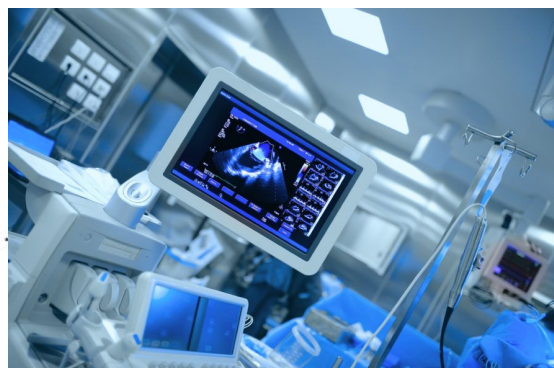


Strong Partnerships Build Strong Communities



“Leading with a Workforce Development Lens”



WHO DOES WORKFORCE
DEVELOPMENT BENEFIT?



2022-2030 STRATEGIC PLAN

Building a Talent Strong Texas

Fostering the skills and spurring the innovation vital to the Texas economy.



**State Funding
for Outcomes**



**Affordability
for Students**



**Investments in
College Capacity**

House Bill 8



Occupational Skills Awards OSAs

- 9-14 semester credit hours or 144-359 contact hours
- TSI-waived
- External Workforce Advisory Committee or Local Workforce Board Demand Occupations List
- WECM Courses
- Prepares students for employment
- IBCs

EMT

Bookkeeping

Entrepreneurship

Child Development Behavior Management

Child Development Classroom Foundations

Child Development Exceptional Children

Computer Repair

Computer Applications

Criminal Justice Support Services





Texas Workforce
Commission

2023-2024
All-Star
College
Award



Workforce Development Partnerships

- **Employer Partnerships** - Customized Training
- Incumbent Workers Training, Upskilling and Reskilling
- Work-based Learning Experiences: Internships, Apprenticeships, Service Learning, etc.
- Industry 4.0 Pathways – Credit, Non-credit and EIT Pathways for GED Students
- **Education Partnerships** - Dual Enrollment Pathways, University Transfer pathways
- Prior Learning Credit – Veterans, Licensure, Testing
- Industry Recognized Credentials
- Manufacturing, Engineering Technology, Industrial Trades, Advanced Technologies and more
- **Community Partnerships** – Develop workforce for competitive economic development
- Providing basic needs resources to students, food, housing, healthcare, counseling, legal, financial



THE OLD STUDENT EXPERIENCE

- Are you planning to go to work or transfer to a university?
 - Not exclusive – still preparing for a career
 - Students are already working - Low wage positions – retail, fast food
- Are you here to get your basics?
 - Nationwide about $\frac{1}{4}$ do not return in their second semester
 - Nationwide nearly $\frac{1}{2}$ do not return in their second year.
 - In their time with us, how have we prepared them to be successful?
- Are you here for a GED?
 - Is it really the GED they desire or is it the opportunities for career success that comes with it?
- Are you sure you want to study sociology? Do you know what they do?

How do we create a 21st century career experience and build the talent pipeline that leads to economic mobility?

Let's apply a workforce development lens...

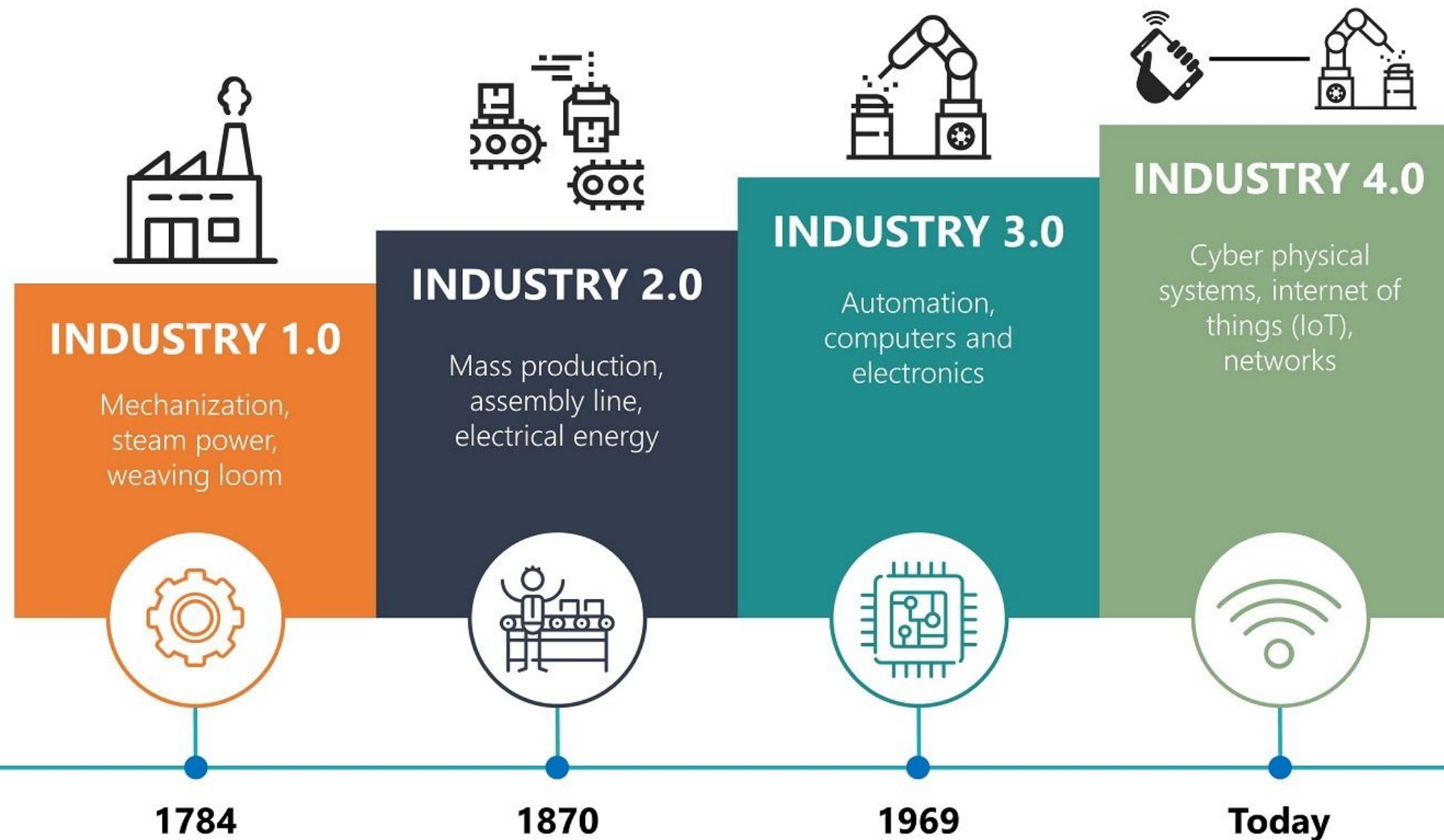
NEW WORKFORCE MODEL

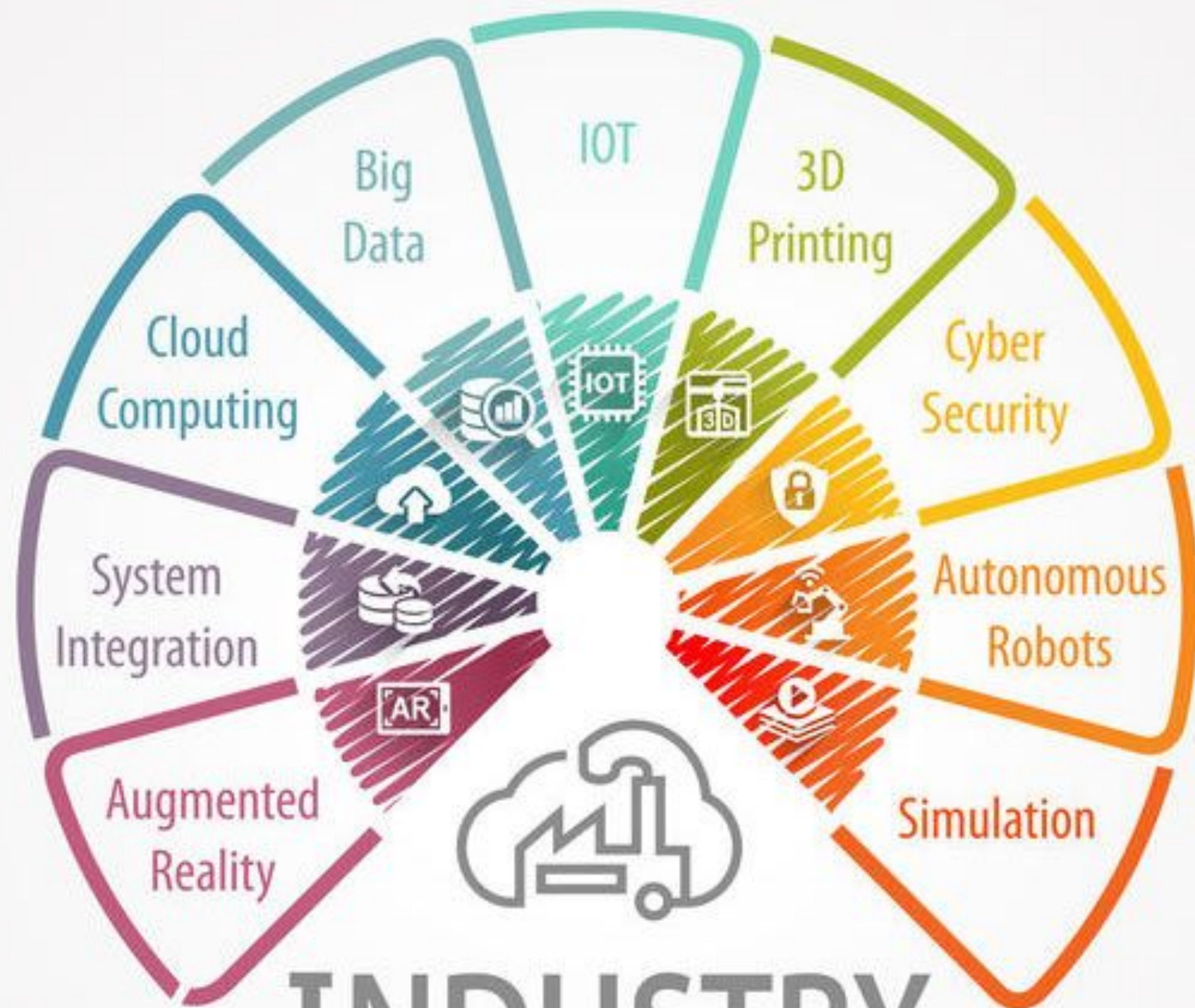
- Accelerated - sequenced coursework
- Stackable Awards
- Industry 4.0 Integration – Technology Innovation
- Workforce Readiness Training
(embedded employability & soft skills)
- Simulated Work Environments and Experiences – shiftwork tra
- Contextualized Math/Reading and writing
- Industry Recognized Credentials (IBC)
- Work-based learning experiences
(Earn & Learn – apprentice/internships)
- Connected Pathways to Employment
- Pathways designed for maximum transferability
- Special Industry Partnerships
- Special university partnerships
- Prior Learning Assessment – credit for credential



WHAT DOES THAT LOOK LIKE?

INTEGRATION OF INDUSTRY 4.0





AAS IN ELECTROMECHANICAL CURRICULUM (SEQUENCED 8 WEEK TERMS)

FIRST YEAR FALL (8 Weeks Terms) SCH

1st 8 Weeks:

- TECM 1349 Technical Math
or MATH 1314 College Algebra or
MATH 2412 Pre-CAL I 3
- INMT 1305 Introduction to Industrial Maintenance 3

2nd 8 Weeks;

- ELPT 1357 Industrial Wiring 3
- DFTG 1305 Introduction to Technical Drawing
or ENGR 1304 Engineering Design Graphics 2 3
- CETT 1409 DC-AC Circuits
or ENGT 1409 AC/CD Circuits for Engineering Technology 4

Level I Electrical Assistant Certificate
Total SCH 16

FIRST YEAR SPRING

1st 8 Weeks

- ELMT 1301 Programmable Logic Controllers 3
- **OSHT 1391 Special Topics in Occupational Safety and Health Technology/Technician** 3*

2nd 8 Weeks

- ENGL 1301 Composition I 3
- INMT 1417 Industrial Automation 4

Total SCH 13

TOTAL FIRST YEAR 29

SECOND YEAR FALL SCH

1st 8 Weeks

- ELMT-1305 Basic Fluid Power 3
- INMT- 2303 Pumps, Compressors and Mechanical Drives 3

2nd 8 Weeks

- ELMT-2441 Electromechanical Systems 4
- INMT- 2345 Industrial Trouble Shooting 3
- HUMANITIES/FINE ARTS 3

Total SCH 16

SECOND YEAR SPRING

1st 8 Weeks

- ELMT 2391 SPECIAL TOPICS:
Electomechanical Systems Research and Design 3
- SPCH 1315 Public Speaking 3

2nd 8 Weeks

- NATURAL SCIENCE 3
- ELMT-2366 PRACTICUM Electro-Mechanical Engineering 3
- SOCIAL/BEHAVIORAL SCIENCE 3

Total SCH 15

TOTAL SECOND YEAR 31
TOTAL AAS DEGREE 60

*Important:

OSHT 1391 Special Topics in Occupational Safety and Health Technology/Technician shown in the Spring semester is recommended to be moved to the first semester for dual enrollment students to earn an Industry Recognized Credential in Safety and ensure safety is observed on equipment in subsequent courses.

*Courses selected by students may cause a slight variance in the number of credits earned per term. For example, TSI-ready students will be encouraged to enroll in College Algebra instead of Technical Math for transferability. Students eligible for Pre-Cal will be encouraged to enroll in the Pre-Cal course which will earn 4 credits instead of the 3 designated for Tech Math or Algebra and provide greater opportunity for the student to transfer to a university in an Engineering Technology Pathway.

Transfer Pathway available Fall 2022

**Accelerated - sequenced coursework
Stackable Awards**

DESIGNING NEW INDUSTRY 4.0 CURRICULUM ELECTROMECHANICAL ENGINEERING TECHNOLOGY SERVING THE SEMICONDUCTOR INDUSTRY

2022 AAS Degree in Electromechanical Engineering Technology

program designed to include Industry 4.0 Principles

- Electromechanical Engineering Technician Certificate (Level I – TSI not attached).

Common Careers for Graduates

Controls and automation technologist.

- Robotics programmer.
- PLC programmer.
- Industrial Machine Repair
- Technical sales specialist.
- Field service technologist
- Machinery manufacturing
- Engineering services
- Transportation equipment manufacturing
- Navigational, measuring, electromedical, and control instruments manufacturing
- Semiconductor and other electronic component manufacturing.

Electromechanical Certificate / AAS in Electromechanical Engineering Technology				
Workforce Training	Workforce Training	Workforce Training	Workforce Training	Workforce Training
Safety Tech	Mecha-Tech	Power Tech	Robo-Tech	Automation - Tech
Entry Level Safety Training for employment in the industrial, construction, and manufacturing sectors & Work Readiness	Entry Level Mechanical Assistant to support industrial and construction related projects and employers	Entry-level Industrial Mechanic Helper in pneumatic and hydraulic applications	Fundamentals of Robotics and control systems	PLC and Sensor Technology
AR/VR	Mechanical	Hydraulic/pneumatic	Robotics	IIOT - Mechatronix
6-8 Weeks	6-8 Weeks	6-8 Weeks	6-8 Weeks	6-8 Weeks
3M Safety / MSSC CPT *3-6 SCH	Festo Mechanical Certification *3-6 SCH	Festo Hydraulic /Pneumatic Certification *3-6 SCH	Festo Robotics *3-6 SCH	Festo Mechatronix *3-6 SCH

*Potential Credit – Prior Learning Assessment

Accelerated - sequenced coursework
Stackable Awards



SHORT-TERM TRAINING INDUSTRY RECOGNIZED CREDENTIALS



- **Construction/General Industry**

- Safety:

- Forklift Operations
- Hazwoper40
- OSHA 10/30
- NCCER
- CPR for Industry



- Electrical: Bending / Wiring
- Mechanical
- Hydraulics & Pneumatics
- HVAC
- Welding
- Pipefitting / Plumbing



Virtual Reality Semiconductor Training



New High-Tech Industrial Offerings

CADD Engineering Technology

- Architectural & Construction Pathway- Drawing & Printing in 3D
- Robotics Engineering Technology – Design, build and automation

Electromechanical Engineering Technology- “Mechatronics”

- Multi-Maintenance Craft Program: Electrical, Mechanical, Hydraulic, Pneumatics, Robotics & Automation

In each program, students can earn:
Industry Certifications, OSA's, Level I & II Certificates,
Associates Degree & Work-Placed Learning Opportunities
Internship & Apprenticeship

Robotics Welding



BUSINESS & INDUSTRY PARTNERSHIPS INTERDEPENDENT - COLLABORATIVE

- Partnerships – sharing of strategic plans
- Workforce / Labor market data
- Training on Employers Schedule - Shiftwork
- On-site Training – job site
- Mobile Learning Labs
- Industry Luncheon – Listening Tours
- Co-building Programs



2024 & Legacy Workforce Training Partners



CO-DESIGNED PROGRAMS

Multi-Tech Medical Assistant Certificate

Workforce Pathway #1:

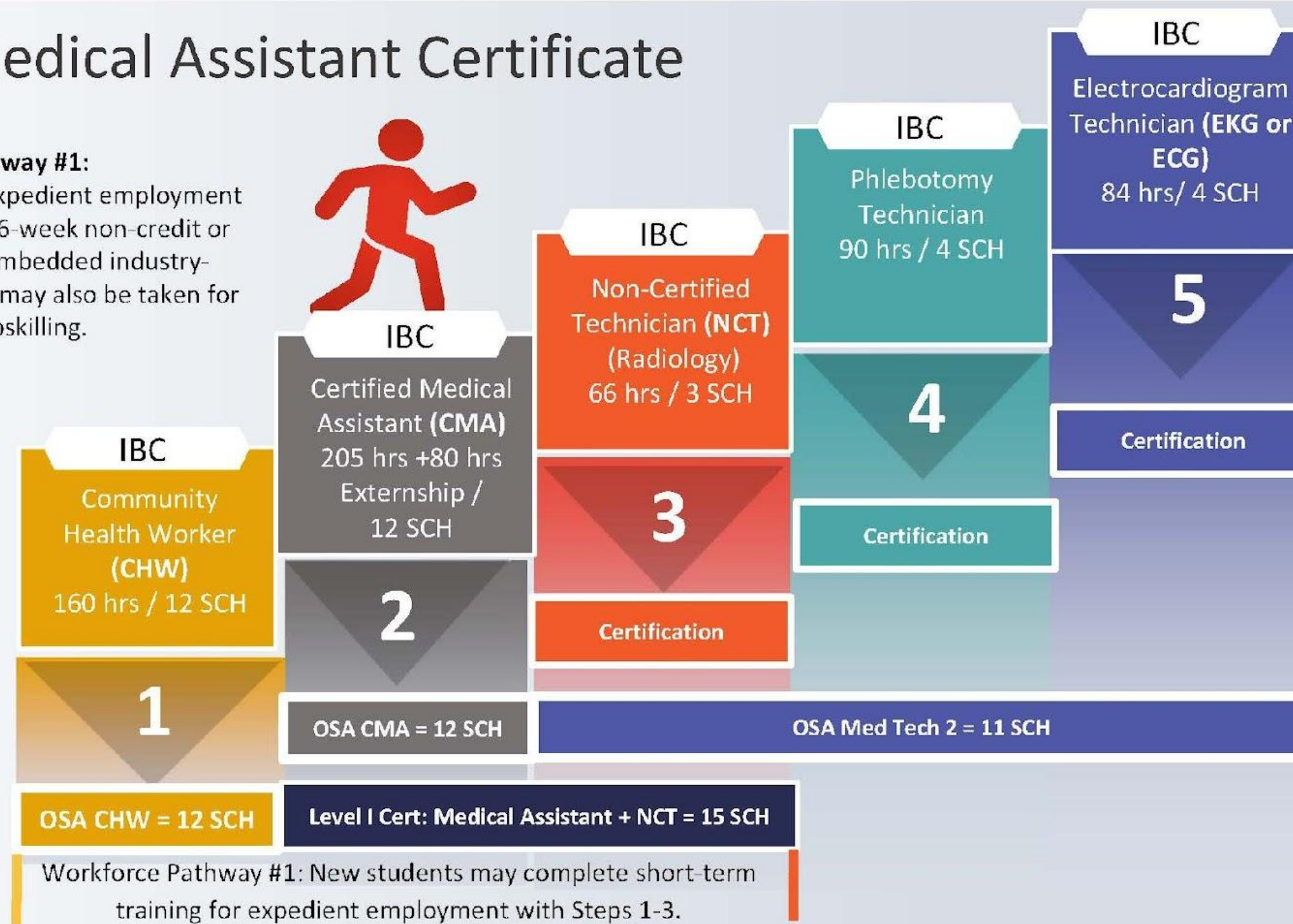
Steps 1-3. Students seeking expedient employment may enroll in an 8-week or 16-week non-credit or credit OSA pathway with embedded industry-recognized credentials. OSAs may also be taken for reskilling and upskilling.

Upskilling Pathway #2:

Steps 3-5. Current Certified Medical Assistants may return to upskill by completing the credit OSA Med Tech 2 Certificate or the CHW/NCT Certifications.

TSIA/PLA

OSAs and Level I Certificates may be earned without TSIA. CMAs and other medical professionals may be eligible for credit through prior learning assessment.



Workforce Pathway #1: New students may complete short-term training for expedient employment with Steps 1-3.

Upskilling Pathway #2: Current CMAs may complete credit OSA Med Tech 2 Certificate and/or any standalone certification Steps 3-5.



Workforce

Short-term Training/IBCs

CNA

CMA

CPR for Healthcare

EKG Technician

Pharmacy Technician

Phlebotomy Technician

Sterile Processing Technician

❖ **Community Health Worker**

❖ **Clinical Patient Care
Technician**

❖ **Mental Health Specialist**

❖ **Programs – New & Redesigned**

Certificates & Degrees / IBCs

Dental Hygiene

Respiratory Care

Diagnostic Medical Sonography, Vascular

EMT, Paramedic, Emergency Medical Services

Nursing / Vocational Nursing

Surgical Technology

Polysomnography

❖ **Neurodiagnostic Technology**

❖ **Echo-Cardiograph Technology**

Healthcare Sector Partnerships

Work-based Learning: Clinicals, Apprenticeships, Internships



Exciting Programs in Business & Technology Workforce

Accounting, Bookkeeping

Business Administration Marketing & Entrepreneurship

Launch Temple

Business/Management

Computer Science

Criminal Justice – Police

- ❖ Cybersecurity
- ❖ Child Development
- ❖ Data Analytics

❖ **Programs – New, Redesigned & Under Development**



INNOVATING PROGRAMS

- ❖ Child Development
 - ❖ Teacher Education Pathway Integration for transferability
 - ❖ 100% Online
 - ❖ Pre-service Training for employment
 - ❖ Partner with TWC
 - ❖ Short-term Stackable Certificates
 - ❖ Specialized Training for employers
 - ❖ CDA & Educational Aide Credentials
 - ❖ Integration of Baby Simulators
 - ❖ Embedded work-based learning
 - ❖ Entrepreneurship
 - ❖ Childcare Facility Management and Ownership
 - ❖ Dual Enrollment and Adult Education Pathways



INNOVATING PROGRAMS

- ❖ **Visual & Performing Arts**
 - ❖ Photography
 - ❖ Art
 - ❖ Music
- ❖ Integration of Credentials of Value
- ❖ Employability Training
- ❖ Career Planning
- ❖ Personal Inventory
- ❖ Industry based Credentials



Free Adult Education & Literacy

High School Equivalency (HSE) (GED)
GED Fast Track
Texas Success Initiative (TSI) Prep
Career Pathways Integrated Education and Training
(IET)
English as a Second Language (ESL/TOEFL)
ESL Fast Track
Corrections/Re-Entry HSE/GED
Workplace Literacy (At-the-Jobsite)
ESL Contextualized for Priests (1 of 6 nationwide)
Family Literacy (1 of 4 statewide)

Adult Education Corporate Partnerships

Community Connection = Workplace Literacy – ESL – GED
Integrated Workforce Training - ALL FREE SERVICES



Heart of Texas
Goodwill Industries, Inc.
Serving the community since 1955



CERTIFICATION CENTER – PRIOR LEARNING

Data Analytics & Computer Technology

- Data Network & Analytics
 - Data Analytics
- CISCO
- COMPTIA A+
- COMPTIA Fundamentals
- UAV Drone Flight



Business & Technology

- MS Office



THE CHANGING LANDSCAPE TAYLOR AND CENTRAL TEXAS

- Temple College at Taylor Campus
 - Electromechanical Engineering Technology
 - Multi-craft Training – Electrical, Mechanical Pneumatics, Hydraulics, Automation & Sensors
 - CADD Engineering Technology
 - Architectural & Construction Technology pathway: Unity, Architectural 3D Design/build Labs
 - Mechanical Engineering Technology pathway: CADD, Unity, Robotics, Prototyping, Engineering Design
 - Short-term Training – Industry Recognized Certifications
 - Certified Production Technician (CPT) Certification
 - New Community Education Coordinator
 - Adult Offerings
 - Embedding Certifications in Adult Education Courses
 - Adult Enrichment Courses
 - GED & ESL
 - Family Literacy
 - STEM Camps & Elementary Adoption
 - Rural Capital Workforce Solutions On-site
 - Future Workforce Center



Earn a certificate or an Associates Degree with industry recognized credentials while you're still in high school!

- Safety (OSHA, 3M, NCCER)
- Certified Production Technician (MSSC)
- AutoCAD User (Autodesk)
- Inventor (Autodesk)
- Revit (Autodesk)
- Industry 4.0 (NC3)
- Fundamentals of Electricity (NC3)
- Mechatronics (NC3)
- Dremel 3D Printing (NC3)
- Greenlee Wire Pathways & Bending (NC3)
- Industrial Maintenance Certification (NCCER)

Hutto Campus



Healthcare Training Coming Soon



Programs & Courses Offered

Continuing Education

Dual Credit

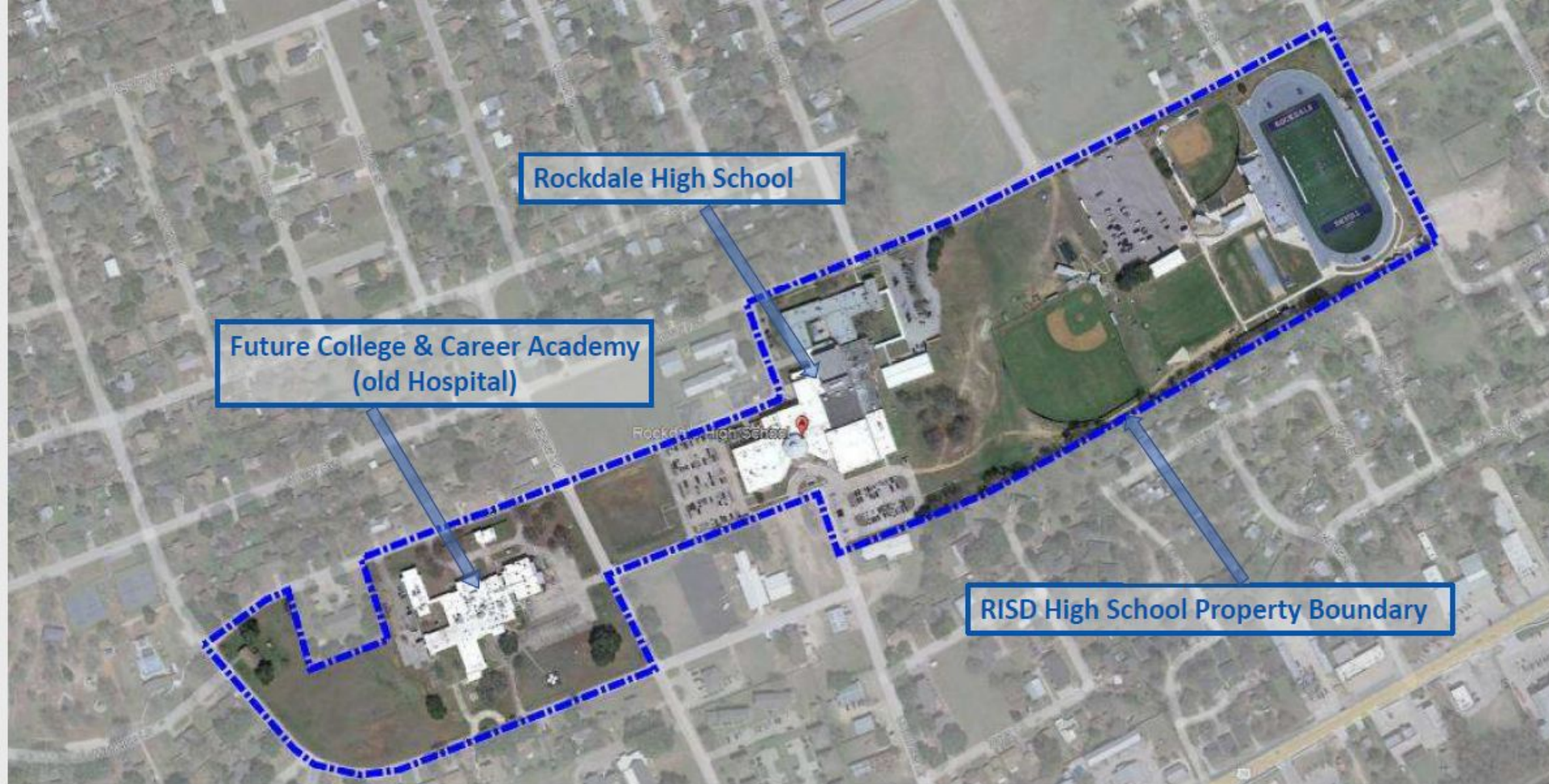
General Education

Business/Management/Career Professions

Emergency Medical Services

Criminal Justice

Computer Information System



- Original Hospital Built in 1974
- Existing Additions
- Existing Maintenance Building
- Existing Functioning Clinic
- Future Location for Ag Mechanics / Construction Trades Building
- District Property Line

Future College & Career Academy



Future College & Career Academy



- **Key Curriculum:**
 - Health Science (CMA, EMT, CNA, PCT, EKG Tech, Pharmacy Tech, Sleep Tech (Polysomnography))
 - STEM / Manufacturing Tech and Machining Mechanics / Robotics / Drone Logistics
 - Information Technology (Programming and Software Development, Cybersecurity, IT Architecture, Web Development, Networking Systems, Media Arts (Graphic Design)).
 - Dual Credit
 - Culinary and Nutrition
- **Future Building Addition: Ag Mechanics / Construction Trades**
 - HS campus Welding Program will remain until new

ROCKDALE/TEMPLE COLLEGE PROJECT



WHAT'S COMING

Precision Agriculture & Sustainable Natural Resources



Construction Technology: Electrician, Plumbing, and Construction Management



Multi-Tech Medical Assistant: CMA+NCT+EKG+Phlebotomy



Logistics Technician

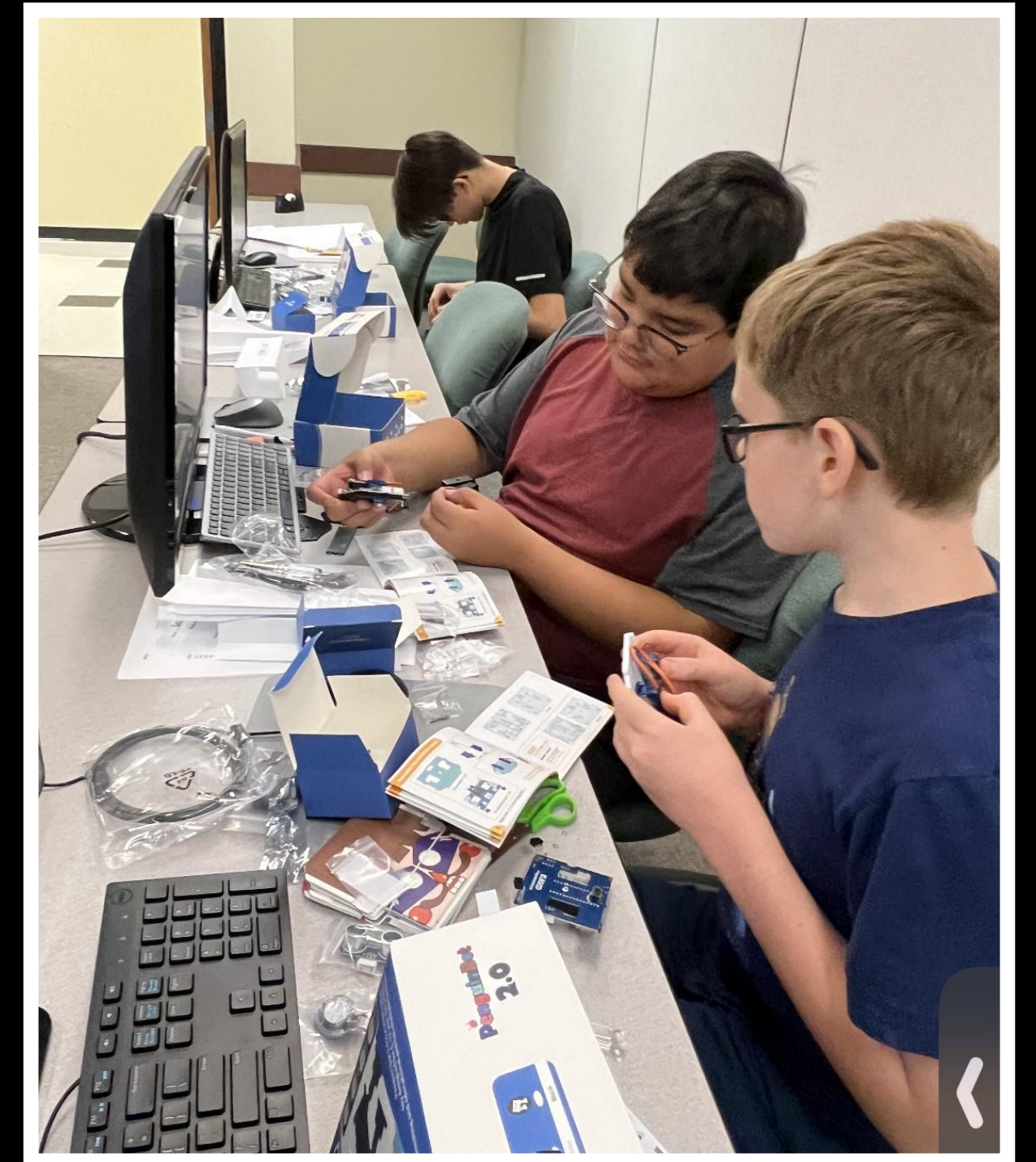
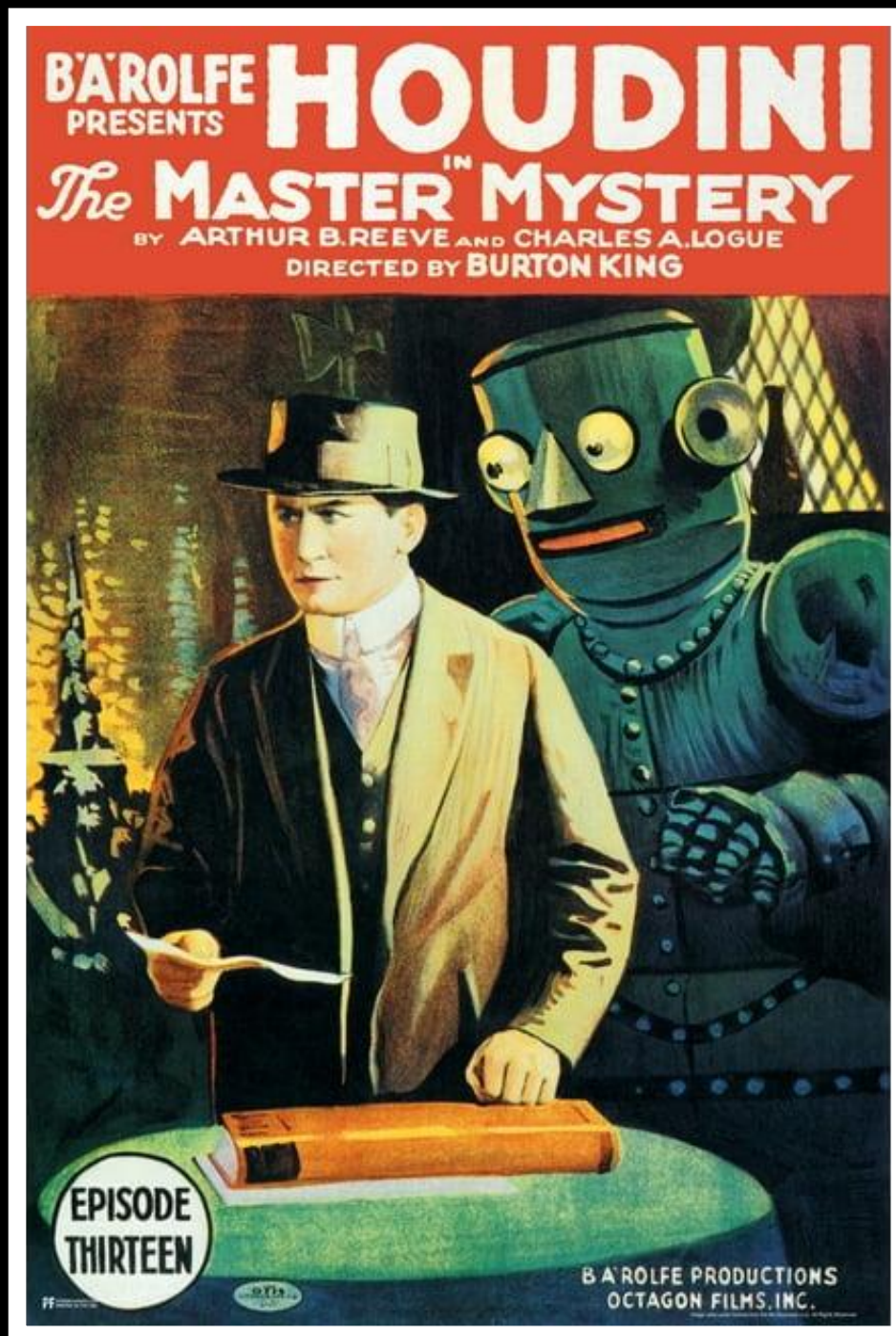


Echo-Cardiography Technician

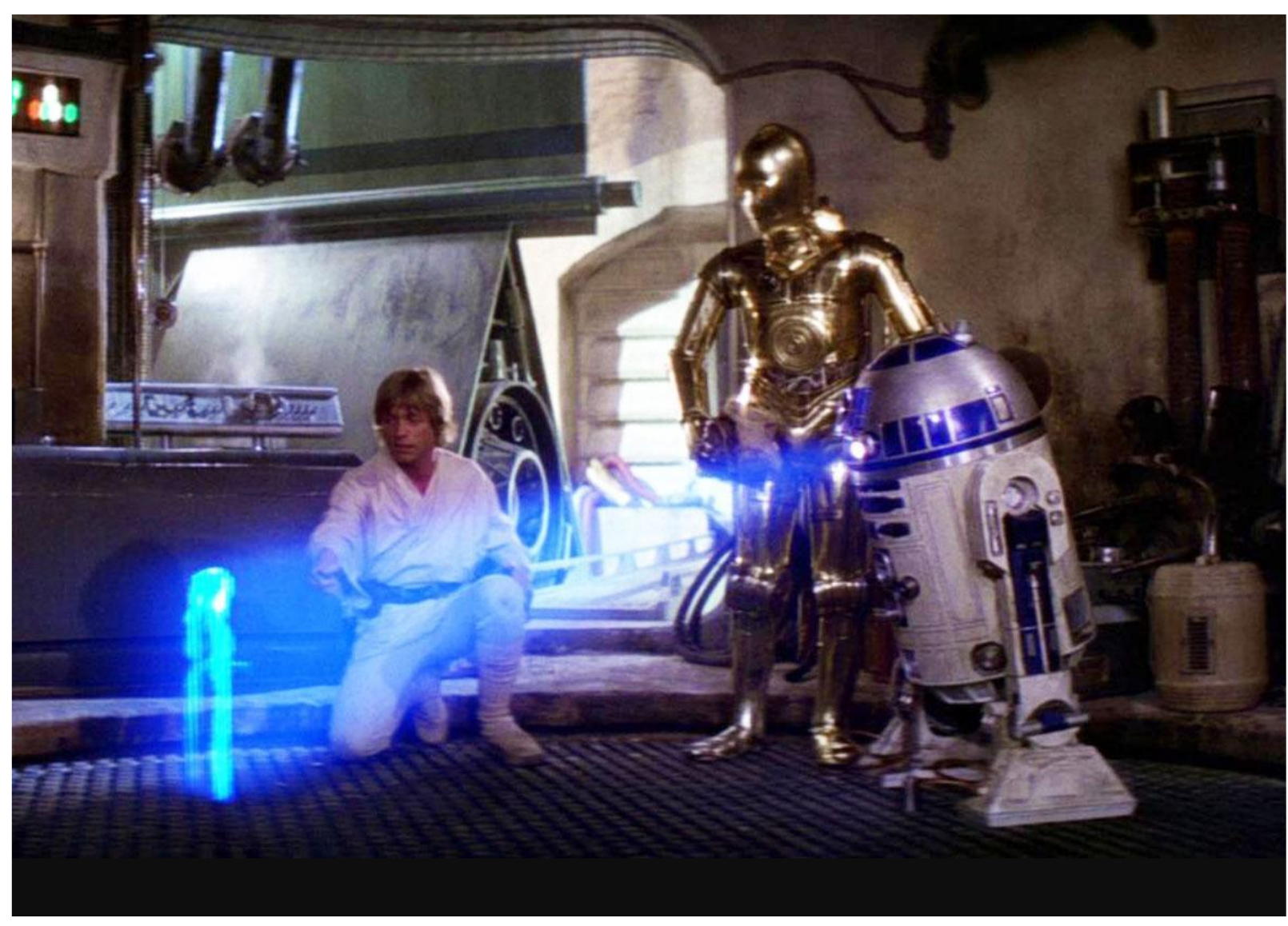


Neurodiagnostic Technician

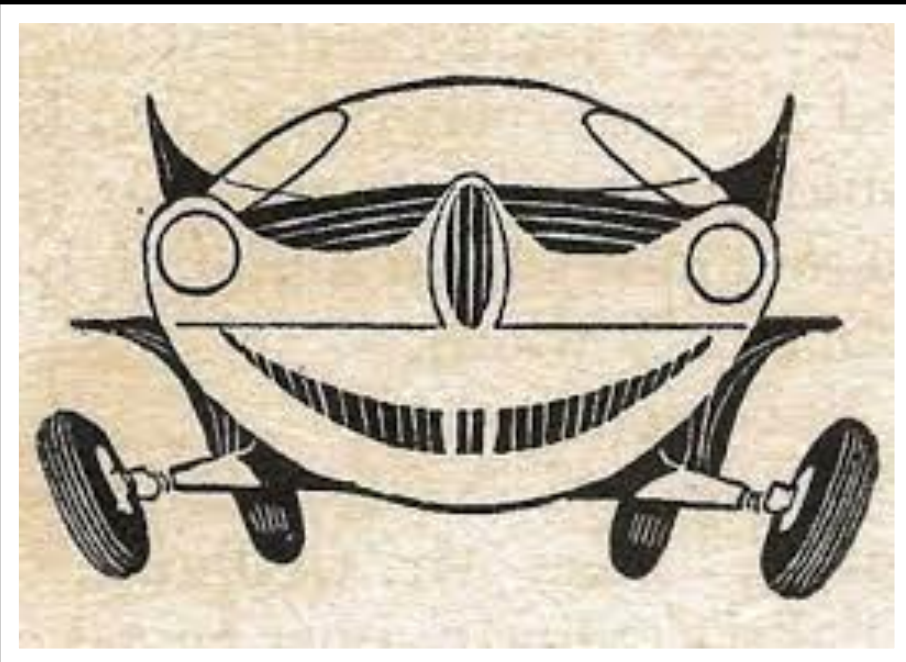
Domestic robots: silent film Houdini's The Master Mystery, a 1919 filmed serial of 15 installments – it contains the first appearance of a robot in cinema. The Jetson's Rosie is the most well-known.



3D holograms: “Star Wars” robot R2D2 projects a holographic image of Princess Leia asking Obi-Wan Kenobi for help.



Autonomous cars: Cars with “robot brains” would be a central feature of the 2014 World’s Fair, science fiction writer Isaac Asimov predicted in The New York Times in 1964. "Much effort will be put into the designing of vehicles with 'robot-brains' – vehicles that can be set for particular destinations and that will then proceed there without interference by the slow reflexes of a human driver," Asimov wrote.



Drones: Frank Herbert's 1965 novel "Dune" envisions a tiny "hunter seeker" assassin drone, and autonomous flying vehicles are everywhere in Star Wars.



Developing Your Future Workforce



TC SkillsUSA STEM Club

108 Hands-On Skills
Competition Categories

Customer Service Engineering
Entrepreneurship
Computer Programming
Crime Scene Investigation
Criminal Justice
Cyber Security
Dental Assisting
Early Childhood Education
First Aid/CPR
Health Knowledge Bowl
Health Occupations
Medical Assisting
Photography
Practical Nursing
Emergency Medical Technician
Demonstration



2024 Texas Gold Medals (5)
2023 National Gold Medal
In Engineering Design

