

Completing the Path Under One Roof: Dual Credit to University Center



DR. LONDA CARRIVEAU

DR. FRED HILLS





McLennan Highlander At a Glance

FALL 2023

Total Students: 7,368

Gender

Male: 33%
Female: 67%

Ethnicity

Black, Non-Hispanic: 13%
Hispanic: 36%
White, Non-Hispanic: 43%
Other: 8%

Average Age: 23

McLennan Residency: 81%



Course Load

Full-time: 31%
Part-time: 69%

Major

Transfer: 84%
Workforce: 16%

Enrollment Type

Returning/Continuing: 53%
Dual Credit: 27%
First Time in College: 15%
First Time Transfer: 5%

Pell grant recipients: 34%



McLennan Highlander At a Glance

SPRING 2024

Total Students: 6,582

Gender

Male: 33%
Female: 67%

Ethnicity

Black, Non-Hispanic: 12%
Hispanic: 35%
White, Non-Hispanic: 45%
Other: 8%

Average Age: 23

McLennan Residency: 78%



Course Load

Full-time: 31%
Part-time: 69%

Major

Transfer: 82%
Workforce: 18%

Enrollment Type

Returning/Continuing: 66%
Dual Credit: 27%
First Time Transfer: 4%
First Time in College: 3%

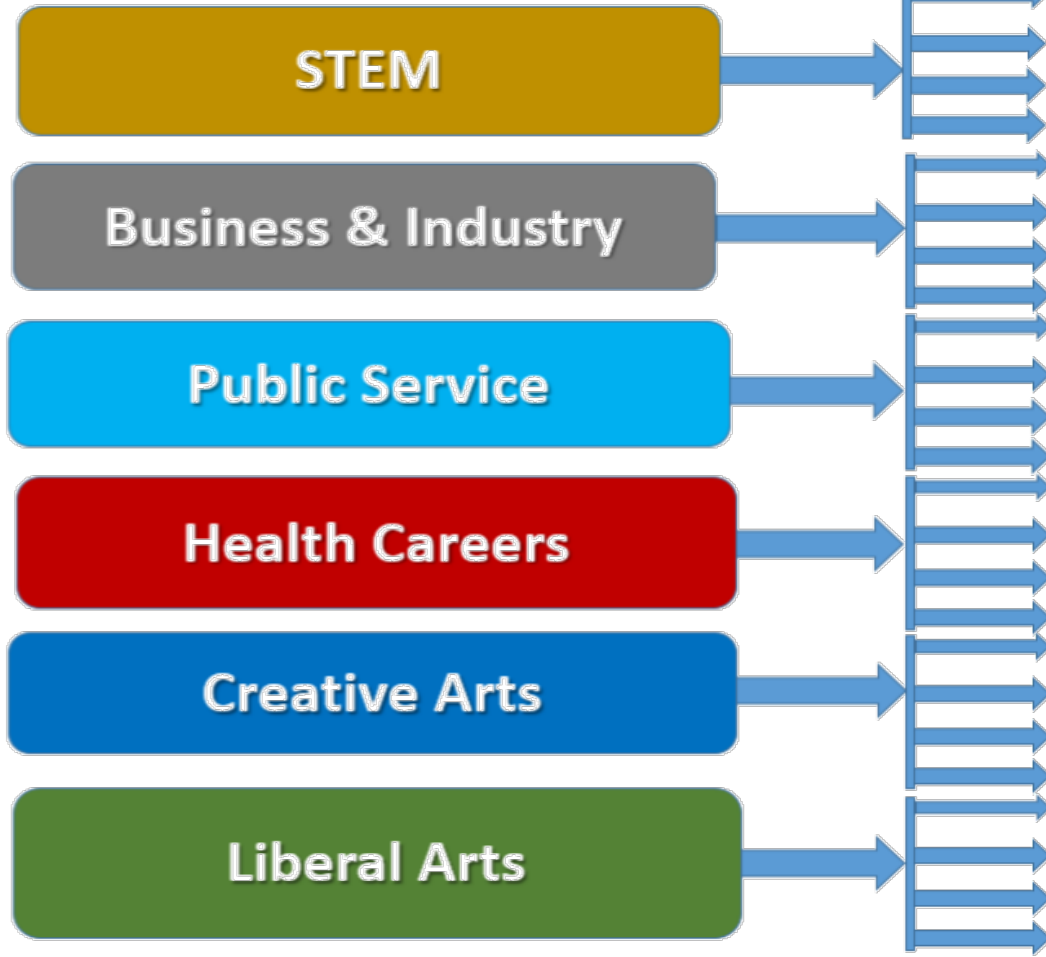
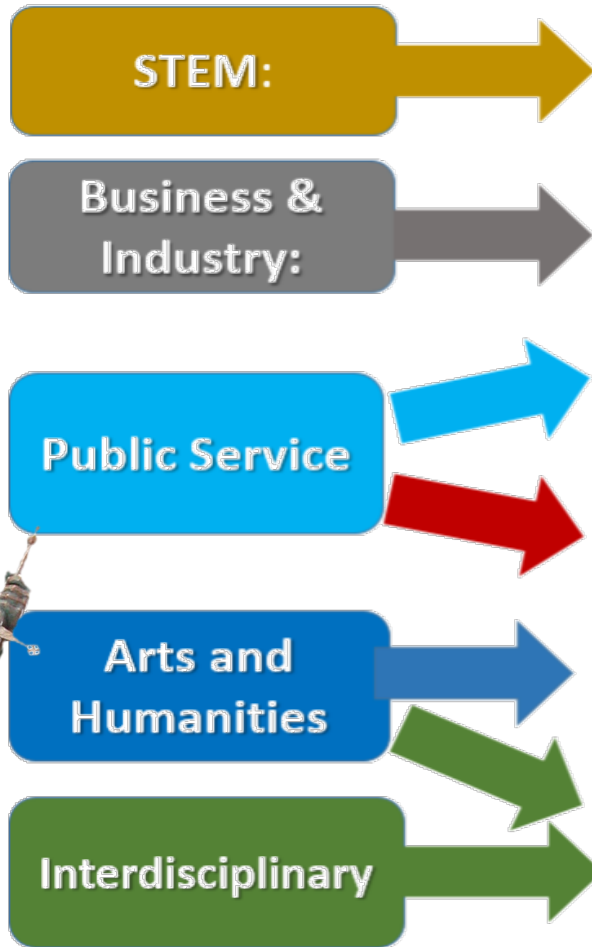
Pell grant recipients: 35%

McLennan Pathways

Transfer & Employment

High School Endorsement

MCC Pathways



MCC's Dual Credit Program

Serves 26 High Schools

- 3 urban, 2 larger suburban, 5 mid-size suburban, 12 rural, 4 charter, assorted private
- 2 P-Techs, 1 – ECHS
- 1,971 students in Fall 2023
- 61% of 2022 DC graduating seniors enrolled at MCC after high school

Students Placed in Pathways

- Pathway selected during application process
- Designated set of “safe” transfer courses
- Mandatory advising for “non-safe” courses and students planning for private/out-of-state schools or other than bachelor degree

Strengths:

- Relationships
- Transferability
- Advising
- Responsiveness



MCC's University Center

Local Challenges

- Waco--the largest city in TX with no public, 4-year institutions within 100 miles
- Limits transfer opportunities for local students

Established in 2001

Approximately 1000 students in 2023/24

- Combined enrollment, Tarleton State and Texas Tech

Center offers variety of degrees in Waco

- 40 Bachelor's Degrees
- 13 Master's Programs



PARTNERS

Primary Partners

- Tarleton State University
- Texas Tech University



Targeted Agreements

- Texas Tech Health Sciences Center
- The University of Texas Medical Branch at Galveston
- Midwestern State University



Multiple Additional Articulations with various Texas institutions

Educational Partnerships



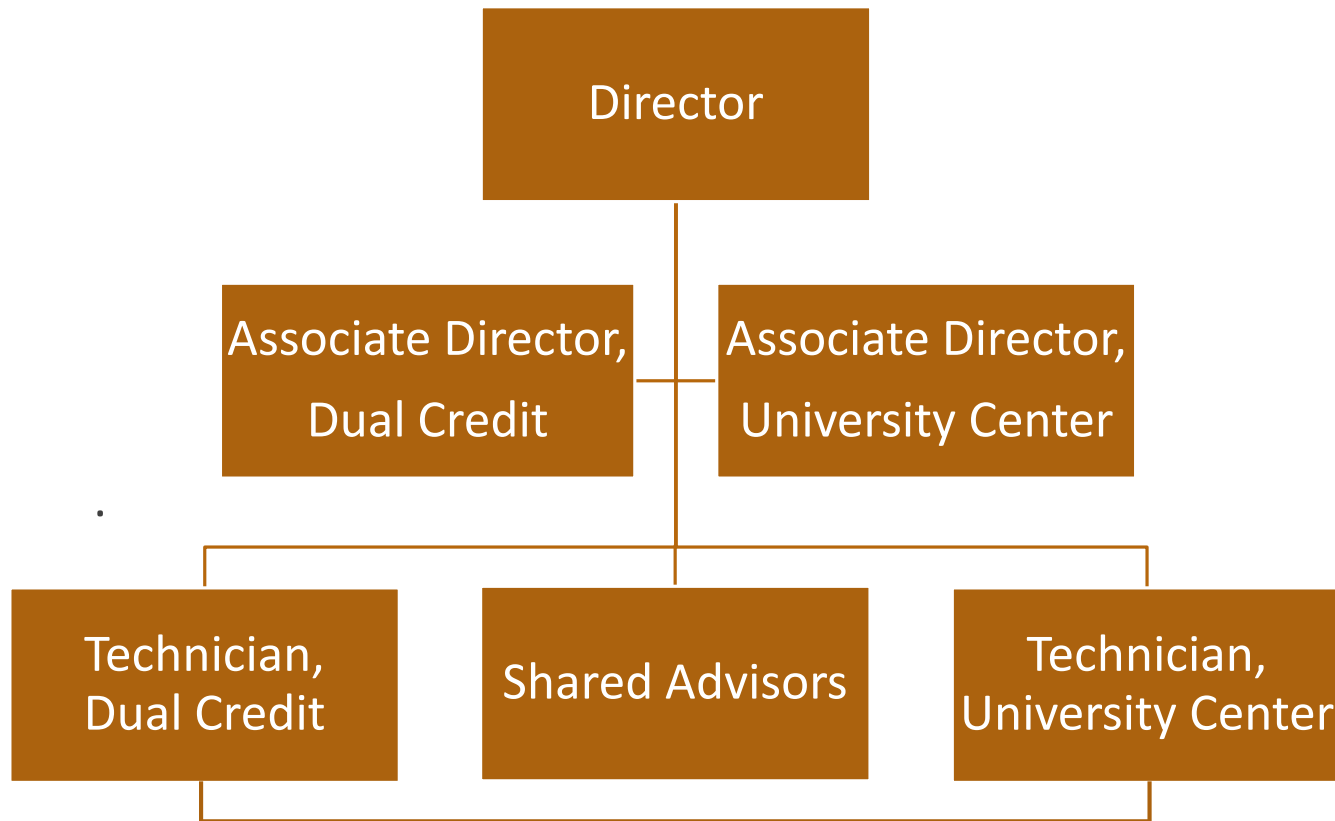
Waco Campuses



Dual Credit + University Center

- Emphasize full Waco experience – Dual Credit to Bachelor’s Degree
- Raise awareness of affordable, local options for place-bound students
- Improve advising and transition assistance to local pathways
- Expand collaboration and distribution of information
- Leverage relationships that already exist with Dual Credit

Structure: Educational Partnerships



ASSOCIATE DIRECTORS

- Weekly planning meetings

ADVISORS and TECHNICIANS

- Ongoing cross-training

STRATEGIC ALLIANCES

- MCC Recruiting
- MCC Records

Cross-Trained
Advisors

Pathways to
TSU/TTU

ADVISING

Tracking
Advising Notes

Improved Advising
“Script”

RAISE AWARENESS

DC marketing materials

Collaborative events, DC-UC

University events

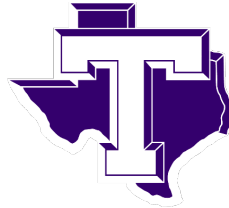
OF LOCAL DEGREES



Reason to Stay Local: DUAL ADMISSION

MCC + TARLETON STATE UNIVERSITY

- Conditional Admission
- Pre-advising
- Bus trip to home campus
- Simplified transition at end of MCC courses
- Access to Degree Works
- Tuition guarantee up to 15 semesters



MCC + TEXAS TECH UNIVERSITY

- Conditional Admission
- Pre-advising
- Bus trip to home campus
- Simplified transition at end of MCC courses



Impact

More knowledgeable program advisors

- Able to specialize in the targeted transfer schools.
- Serve as a connection point for smooth handoff/transition where needed.

More informed dual credit students

- Unsolicited feedback from counselors -- seniors are more aware of the UC offerings.
- Two-year increase from 10% to 18%, advised DC students requesting UC information.

Enrollment numbers: Pending

- Typically a 2-3 year TSU/TTU-Waco lag behind MCC enrollment.
- Initial enrollment for dual admission programs: 600+.

Next Steps

- Improve post-advising contact with DC students interested UC programs.
- Investigate creation of Dual Credit-Tarleton and Dual Credit-TX Tech cohorts.
- Approach UC partners to discuss possibility of scholarships specifically for DC.
- Move towards co-enrollment.
- Expand visibility of all university articulation options.
- Expand metrics tracking student throughout the process.
- Additional personnel to address growth in programs.

Adapting the Concept

Potential Partners

- Reasonable proximity is a bonus but not required.
- Look for a partner that is motivated.

Dual Credit Advising Team

- Identify at least 1 who can serve as an ambassador and build/maintain close relationships with high school counselors and the university contact.

Access is Important

- Regular, easy access to support, particularly advising, is key.
- A mix of virtual and in-person works, but . . .
- Nothing replaces a visible presence on your campus—at least once per year.

Incentives

- Give families a reason to plan local and stay local.

Contact Us

Dr. Fred Hills

Vice President of Instruction and Student Engagement
fhills@mclennan.edu

Dr. Londa Carriveau

Director of Educational Partnerships
lcarriveau@mclennan.edu





“
What are the biggest challenges for advising DC students toward a (local) bachelor degree?



“
**What are the reasons your students might not want to stay local?
What incentives or opportunities might offset the reasons to leave?**