

National Priorities of the Student Success Center Network

Marty Alvarado

Vice President,
Jobs for the Future



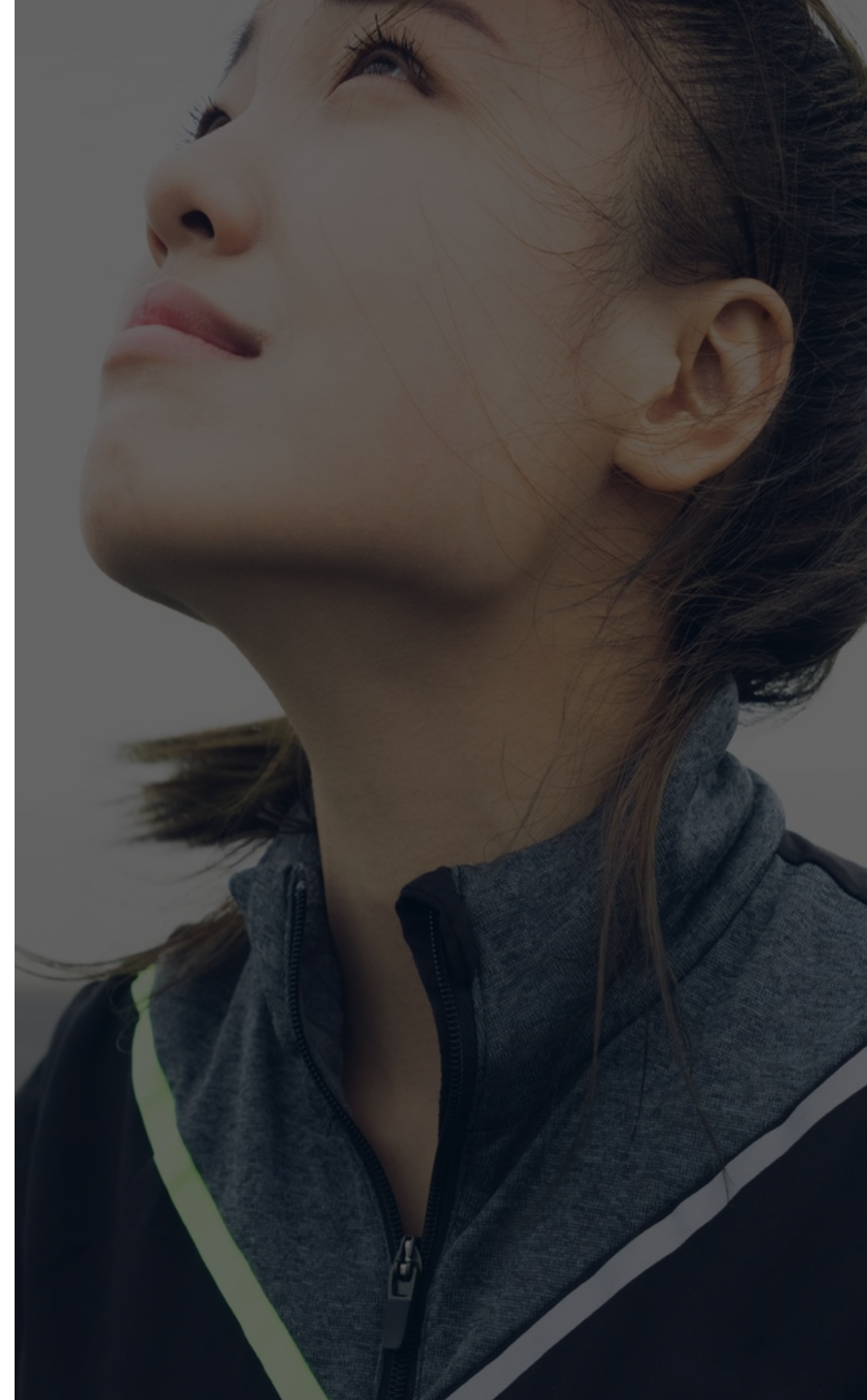
Texas Success Center



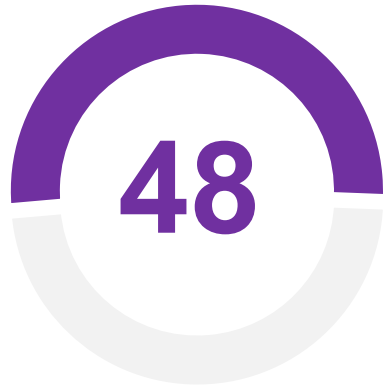
Talent Strong
Texas Pathways

Our North Star

In 10 years, *75 million* people facing systemic barriers to advancement will work in quality jobs.



The Student Success Center Network



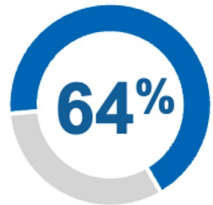
of U.S. public community colleges



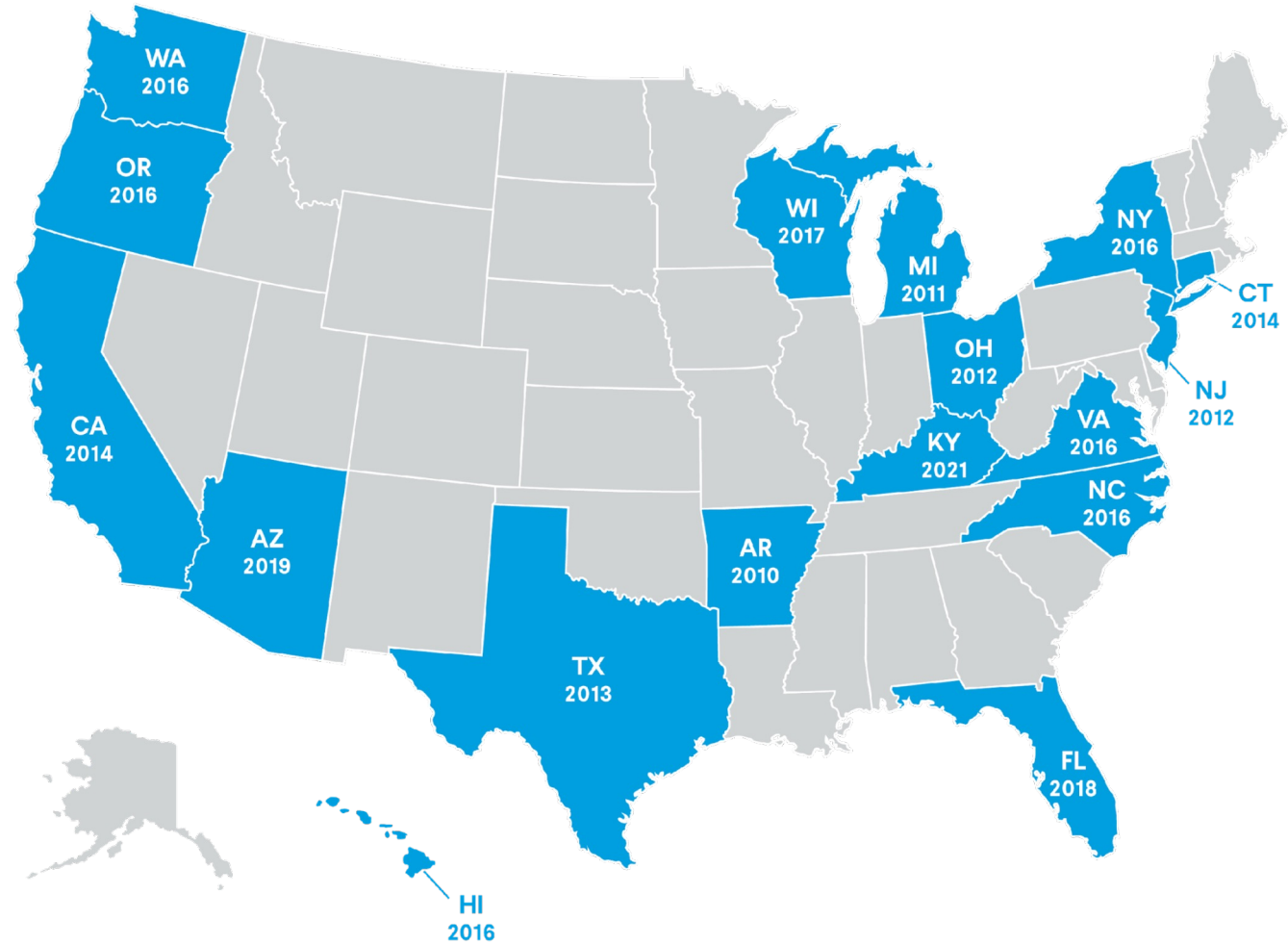
of U.S. community college students



of students of color at U.S. community colleges

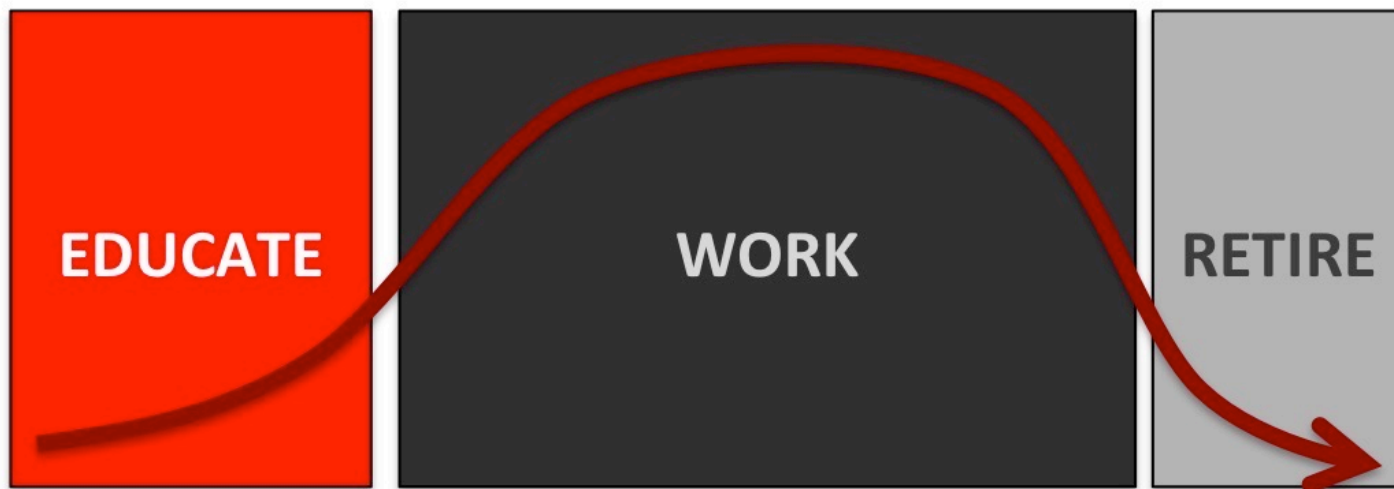


of Pell Grant recipients at U.S. community colleges



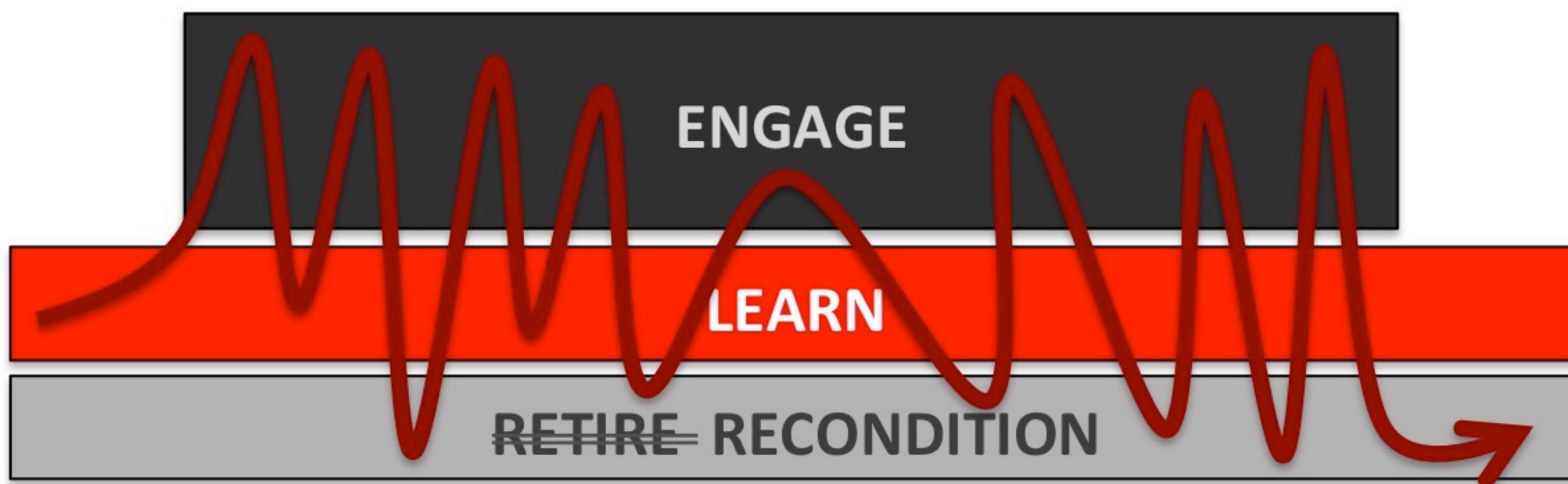
Career Arc: New Economy Shifts Life Blocks

**OLD
ECONOMY**



Lifespan = 73 Years →

**NEW
ECONOMY**



Lifespan = 90 Years →

Career Mobility

Ladder



Employees move from one role to the next, generally up, and generally within a given silo or function

Lattice



Employees move up, around, and sometimes down inside the org

Agency



Employees move around the org based on their skills, knowledge, and preferences

Outside In



Workers with specific skills are brought into the org to accomplish certain projects or pieces of work

Reset



Employees are reskilled and redeployed into new roles, based on the org's needs and strategy