

Setting the Vision for Statewide P-TECH Growth

Texas Association of Community Colleges
Pathways Institute
April 13, 2023



EDUCATE TEXAS
at COMMUNITIES FOUNDATION of TEXAS

Session Presenters



Kenyatta Lovett, Ph.D.
Managing Director
Higher Education and
Workforce



David Deggs, Ph.D.
Director
Higher Education
Programs



Michelle Wisdom
Director
College and Career
Readiness School
Models



Erica Simon
Deputy Director
Higher Education
Strategy



Ynez Chacon
Associate
Higher Education



Educate Texas Overview



EDUCATE TEXAS
at COMMUNITIES FOUNDATION of TEXAS

THINK BIGGER

Our Vision: All Texas students, especially African-American, Latino or economically disadvantaged students, earn a college degree or credential that leads to a living wage and thriving communities.

Our Mission: As a TRUSTED CHANGE AGENT, we increase academic achievement and educational equity by leading programs, policy and partnerships.

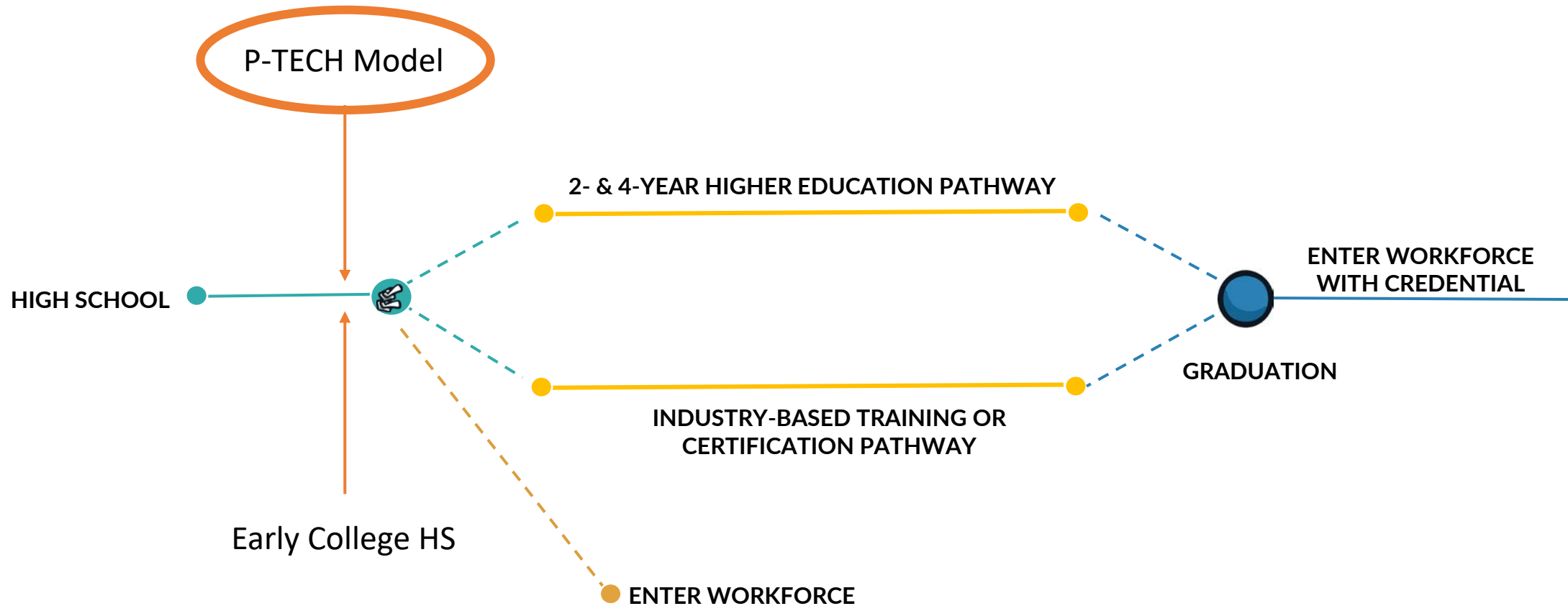
Values:

- Equity
- Collaboration
- Impact
- Integrity
- Learning



EDUCATE TEXAS
at COMMUNITIES FOUNDATION of TEXAS

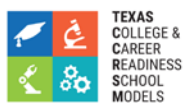
Education-to-Career Continuum



EdTX's Efforts to Support the Education-to-Career Continuum

EdTX Initiatives and Programs

Existing programs support pathways to career efforts



TEXAS
COLLEGE &
CAREER
READINESS
SCHOOL
MODELS



TxCAN
an INITIATIVE of EDUCATE TEXAS



WE CAN TX
an INITIATIVE of EDUCATE TEXAS



**RURAL CCMR
ACCELERATOR**

Emerging programs and initiatives

San Antonio Workforce Alignment Project

Accelerate ED

Transfer Alliance

PTECH Expansion

HCA Healthcare Pathways

Teacher Apprenticeship

National Engagement

Participation in national pathways initiatives

JFF's Big Blur

Building Equitable
Pathways

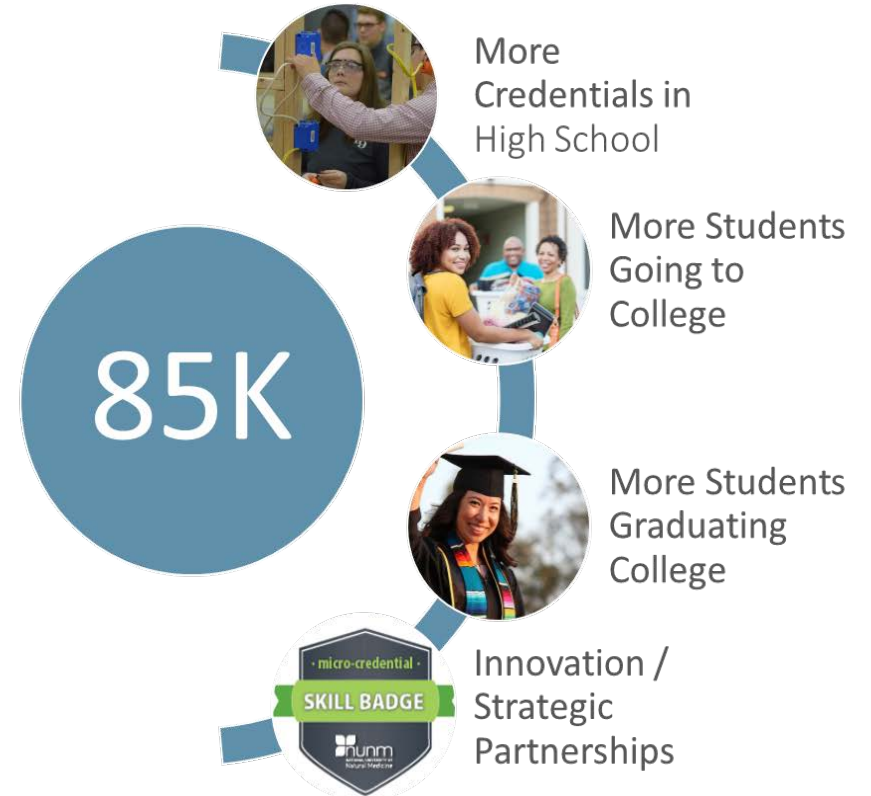
Launch: Equitable &
Accelerated Pathways for
All

Educate Texas 2025 Strategy

Strategy 2025 Goals

→ *Contribute 85,000 degrees/credentials to the state by 2025 in alignment with Texas Higher Education Coordinating Board's state goals on higher education, Building A Talent Strong Texas*

→ *Create sustainable system changes to enable teacher preparation programs and school systems to attract, prepare, develop and retain a high quality, diverse teacher workforce.*



P-TECH Footprint, Model, and Benefits

Current P-TECH Footprint

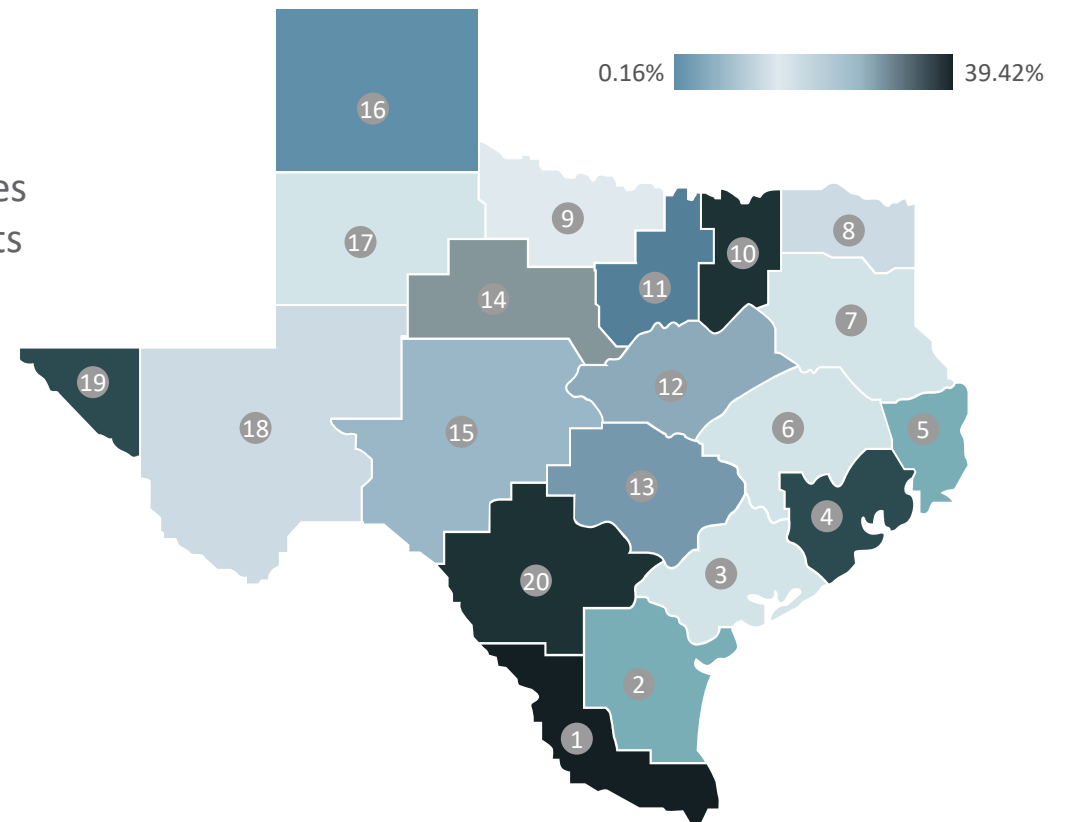
29,584
Students

- 227 P-TECH campuses will be active in 2022-23
- The DFW metroplex accounts for 47% of total participation
- Dallas ISD serves 6,894 students across 18 campuses
- 55 school districts each serve less than 100 students

46
Higher
Ed
Partners

- Dallas College is the leading IHE partner serving 11,186 students across 38 campuses
- 17 IHEs partner with only 1 campus
- 9 IHEs partner with 5 or more campuses
- 6 campuses partner with more than 1 IHE

% of P-TECH Participation by TEA Region



Six Pillars of the P-TECH Model

P-TECH is designed to provide high school students from underserved backgrounds with the skills and credentials they need for competitive STEM jobs, leveraging a consistent model across Texas



Partnership

- An integrated partnership between a public high school, a higher ed institution, and an industry partner



Integrated 4 to 6-year model

- Integrated high school and college coursework leading to a two-year postsecondary degree for all students



Cost-free

- Cost-free education, including a two-year postsecondary degree



Open enrollment

- Focus on historically underserved students with no testing or grade requirements



Workplace learning

- Industry mentoring, worksite visits, speakers, project days, skills-based and paid internships



First-in-line for jobs

- A promise of an interview for successful graduates

Value of P-TECHs for Students, Industry Partners, Community Colleges & School Districts



Students

Enables students to earn an industry certificate or two-year postsecondary credential by high school graduation

Provides work-based learning experiences, including internships, apprenticeships, and other job training programs

Focuses on providing opportunities to students who are historically underserved



Industry partners

Pipeline of **skilled & diverse** entry-level talent

Develop specific skills needed at your company via internships

Increased stability amidst fast-changing job market and economy

Quicker hiring process with pre-sourced talent and preferred interviews



Community colleges

Bolsters enrollment pipeline by increasing reach to students most likely to not seek a postsecondary degree, helping close equity gaps

Strengthens relationships with industry partners and increases job placement rate

Early exposure to college courses can lead to higher college readiness, resulting in increased retention and graduation



School districts

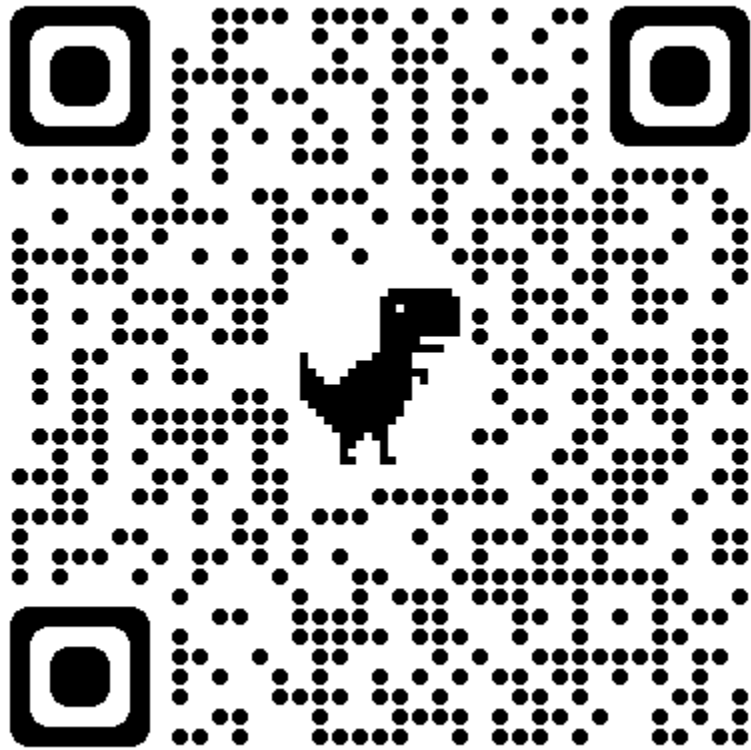
Higher % of P-TECH students passed TSIA2 and STAAR EOC exams compared to non-P-TECH students

Increases proportion of college and career ready students contributing to school and district CCR goals

Differentiates high schools and school districts in an increasingly "competitive" PK-12 space

Discussion:
Challenges for Industry Partners,
Colleges, and Students

Pulse Check



Join at
Slido.com
#7943592

slido



P-TECHs are a viable solution for solving talent needs of industry partners.

ⓘ Start presenting to display the poll results on this slide.

Key Challenges We've Heard from Industry Partners

- Internships require an intensive lift
- Coordinating student schedules
- Providing compensation for students
- Using P-TECH as a strategy to fill middle skill labor gap
- Need for regional coordination of employers to aggregate input

Discussion Questions:

- What are your industry partners telling you about P-TECH partnerships?
- Do you believe P-TECHs can be scaled to solve middle skills labor gaps?
- What value would regional coordination by intermediaries bring to P-TECH industry partnerships?

slido



P-TECHs provide a quality educational experience to students.

ⓘ Start presenting to display the poll results on this slide.

Key Challenges We've Heard from Students

- P-TECH is a very strenuous experience for high school students
- Challenges with credit transfer and mobility
- Options for stackable certifications vary by pathway
- Students are not being immediately hired post graduation

Discussion Questions:

- How can ensure that students who participate in P-TECH programs continue to complete their certificates and/or degrees?
- How do we strengthen internships to lead to employment opportunities?
- What pathways do you find to be the most suitable for P-TECH partnerships?

slido



My college plans to expand its P-TECH offerings in the next two years.

ⓘ Start presenting to display the poll results on this slide.

Key Challenges We've Heard from Colleges

- Curriculum alignment/napping
- Capacity to delivery classes
- Availability of faculty
- Delivering wraparound supports for students
- Sustainability of P-TECH revenue model
- Providing options for students (e.g. transfer of credit, employability)

Discussion Questions:

- How can ISDs be a better P-TECH partner with community colleges?
- What are the incentives for colleges to engage in a P-TECH model? (e.g. revenue, outreach, and access)
- What innovative steps can be taken to provide P-TECH students more options?

P-TECH Expansion Timeline & Engagement Opportunities

P-TECH Expansion Planning Timeline



May – September:
**Community College Readiness
Assessment**



September – November:
**Review and Planning Grant
Development**



November:
**Release Planning Grant Opportunity
to Community Colleges**



EDUCATE TEXAS
at COMMUNITIES FOUNDATION of TEXAS

The "path to 500 campuses", with a few caveats

Slow down



```
graph TD; A[Slow down] --> B[Codify and strengthen the P-TECH model]; B --> C[Specify growth paths for location & archetype]; C --> D[Align available pathways with labor market needs];
```

Codify and strengthen the P-TECH model

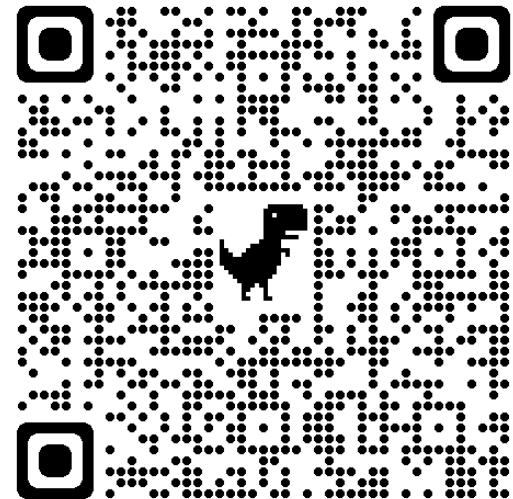
Specify growth paths for location & archetype

Align available pathways with labor market needs

Engagement from every partner is needed to ensure quality P-TECH program delivery across Texas

- Use regional or local workforce data to identify in-demand jobs
- Emphasize optionality and transferability
- Build a detailed, sustainable plan to use public and private funding to program cost free for students
- Aggregate data across all programs to assess impact and effectiveness
- Assess readiness of community colleges and workforce boards

**Click this QR Code &
Share Your Contact
Information to Express
Interest in P-TECH
Expansion**



Session Presenters



Kenyatta Lovett, Ph.D.
Managing Director
Higher Education and
Workforce
klovett@cftexas.org



David Deggs, Ph.D.
Director
Higher Education
Programs
ddeggs@cftexas.org



Michelle Wisdom
Director
College and Career
Readiness School
Models
mwisdom@cftexas.org



Erica Simon
Deputy Director
Higher Education
Strategy
esimon@cftexas.org



Ynez Chacon
Associate
Higher Education
ychacon@cftexas.org

