

Pipelines to Careers

Dr. Gretchen Riehl
Dr. Gaye Lynn Scott
Dr. Ruth Reinhart
Ms. Mison Zuniga





Overview

Workforce Education at ACC creates seamless pipelines for students from where they are to where they want to be leading to careers with family sustaining wages. We do this through intentional programming and alignment in the following areas:

- CE to credit alignments
- P-TECHs and Academies with area high schools
- Earn and learn
- Transfer to baccalaureate degrees
- Appropriate student supports



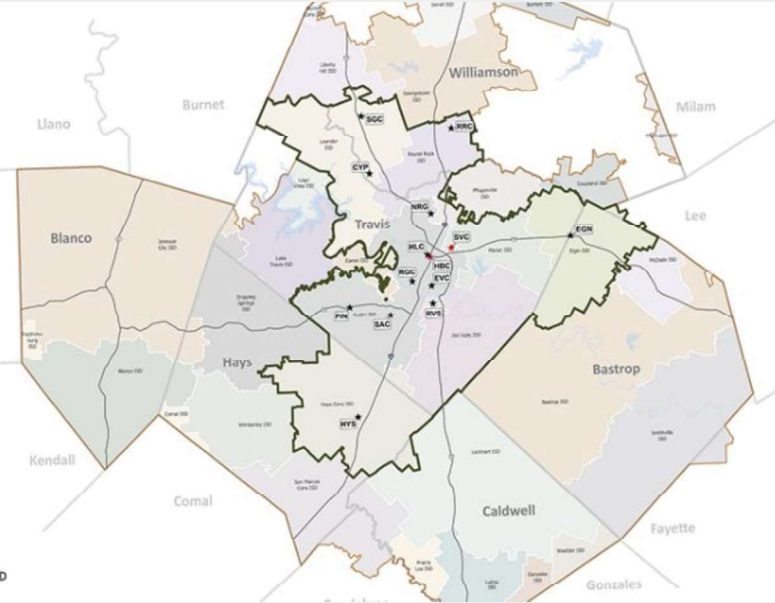
CE to Credit Alignments



Connect Faculty
Align curricula
Foster Student Completion



PTECHS and Academies



ISD partners
Business partners



Transfer to the Baccalaureate

ACC50

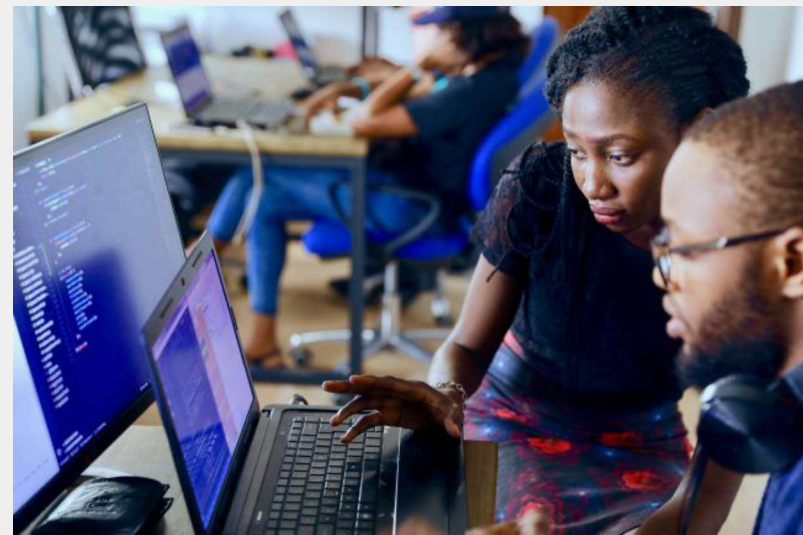


- Identify top transfer partners**
- Create 4 year pathways in top majors**
- Create recruitment and connection team**



Earn and Learn Opportunities

ACC50



Internships
Apprenticeships
Part time jobs at ACC





ACC50

Career Scholars Resource Map

These comprehensive and multifaceted supports are in addition to the wraparound services our traditional students receive. The Student to Staff ratio is 200:1.



College Access

Up to a \$5000 scholarship awarded for two years

Help students prepare their ISPS (Individual Student Portfolio Support)



Learning Community

Summer Bridge includes: Area of Study overview, Resume building, Career overview, 8-week session empowerment, Truth & Racial Healing & Student Money Management



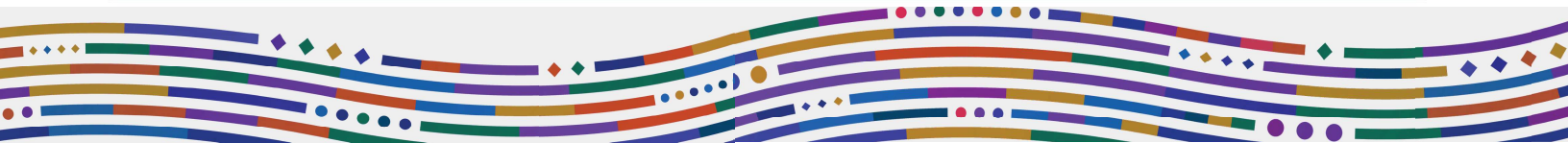
Academic Guidance

Each session is geared toward building student agency and self-motivation



Support Services

Childcare funding, financial literacy, fresh food options, mental health counseling, textbook support, free tutoring, technology resources and more



Lessons Learned

**“Tell me and
I forget.
Teach me and
I remember.
Involve me
and I learn.”**

**First build trust and relationships
Form follows function - college structure
must foster what you want to happen
Follow the data
Build with students in mind**



ACC50



Questions?

