

Central Region

Central Texas College

District Representatives

Birdwell S-22	Schwertner S-5
Buckley H-54	Shine H-55
Campbell S-25	Slawson H-59
Flores S-24	Spiller H-68
Murr H-53	Troxclair H-19
Perry S-28	Wilson H-20

Signature Programs

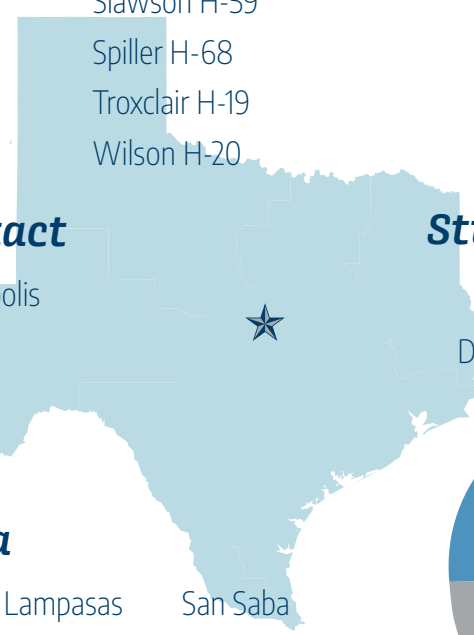
Aviation Science (49.0102) Commercial Pilot Certificate with stackable pathways.

Nursing (51.3801) Robust certificate and associate degree programs in nursing and healthcare to meet regional needs.

Early College High School (ECHS) Enrollment up exponentially over the past 8 years.

College Contact

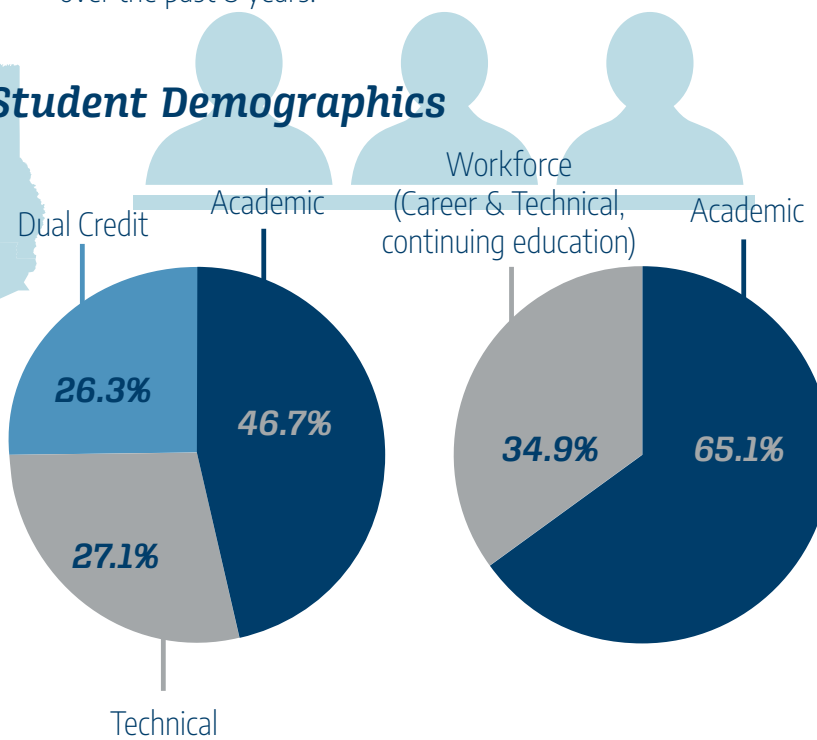
Mr. Jim Yeonopolis
Chancellor
254-526-1214
www.ctcd.edu



Service Area

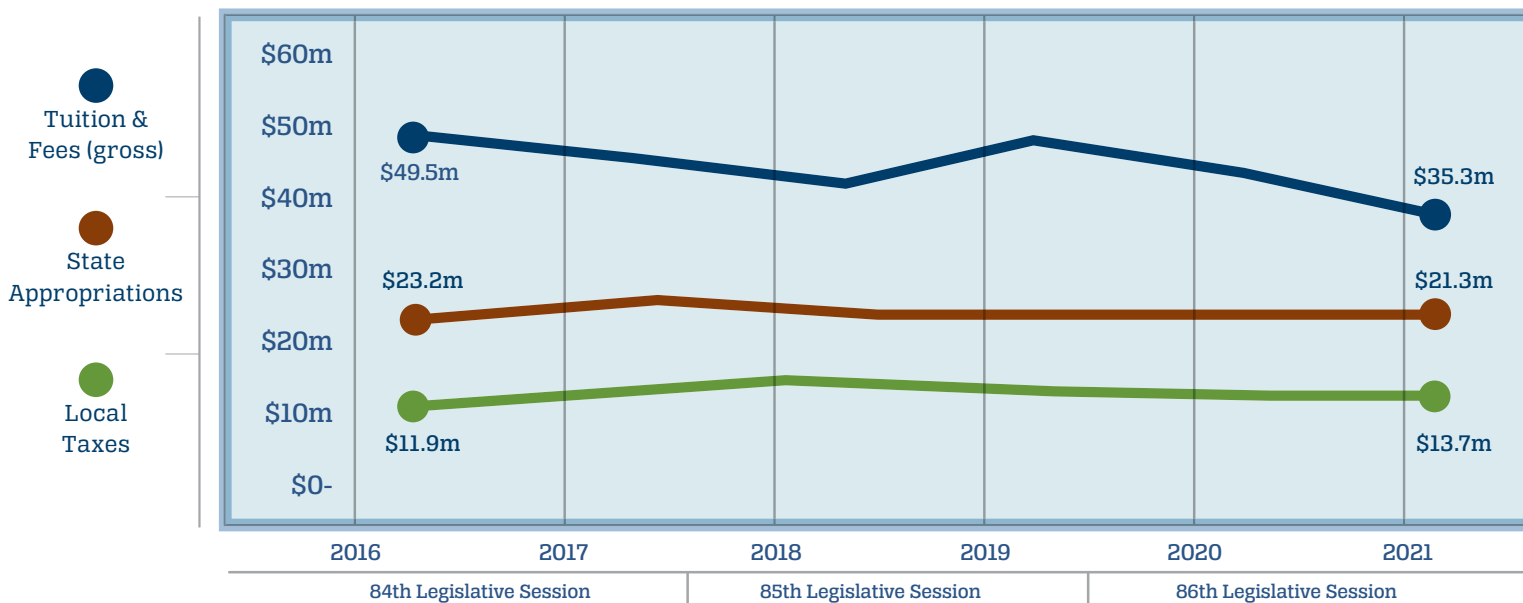
Bell	Lampasas	San Saba
Burnet	Llano	Travis
Coryell	Mason	Williamson
Gillespie	McCulloch	
Hamilton	Mills	

Student Demographics



Fall 2021 Enrollment: 6,641

5-Year Trend in College Revenues



Workforce Opportunities

Central Region Snapshot

In 2020, the **Texas Comptroller** released a study on the state's 50 public community college districts. The study details the importance of these institutions in preparing young Texans to further their educations and begin successful careers in the state's workforce. Building on this study, comptroller and TACC regions were aligned* to develop workforce insights.

*In some cases, this may result in underestimating of jobs and economic impact. Key occupations and top employers may differ at the college service area level.



**Texas Association of
Community Colleges**

**Community colleges in
this region supported:**

11,024 jobs

**Community colleges in
this region reported a
total economic impact of:**

\$1.24 billion

Regional Occupations

- Registered nurse
- Sales representatives, wholesale and manufacturing
- Retail salesperson

Key Occupations

- Computer User Support Specialists
- Industrial Engineering Technologists and Technicians
- Telecommunications Equipment Installers and Repairers
- Computer Network Support Specialists
- License practical and Licensed Vocational Nurse

Top Employers

- Baylor Scott & White Health
- Ascension health
- Hospital Corporation of America
- HEB
- St. David's Healthcare

In-Demand Skills

- Customer Service
- Scheduling
- Sales
- Repair
- Cleaning