



# The Adaptable Professor: Edifying the Faculty of Dual Credit Students Through Intentional Professional Development



Crystal Tewes  
[crystal.tewes@sjcd.edu](mailto:crystal.tewes@sjcd.edu)

# Let the Data Guide the Conversation



Institutional Research  
and  
Data Science

# Our Institution



**Leadership Team**



**Deans Council**



**Center for Excellence &  
Teaching & Learning**



**Dual Credit Council**



**Dual Credit Directors**



# Dual Credit Professional Development Series



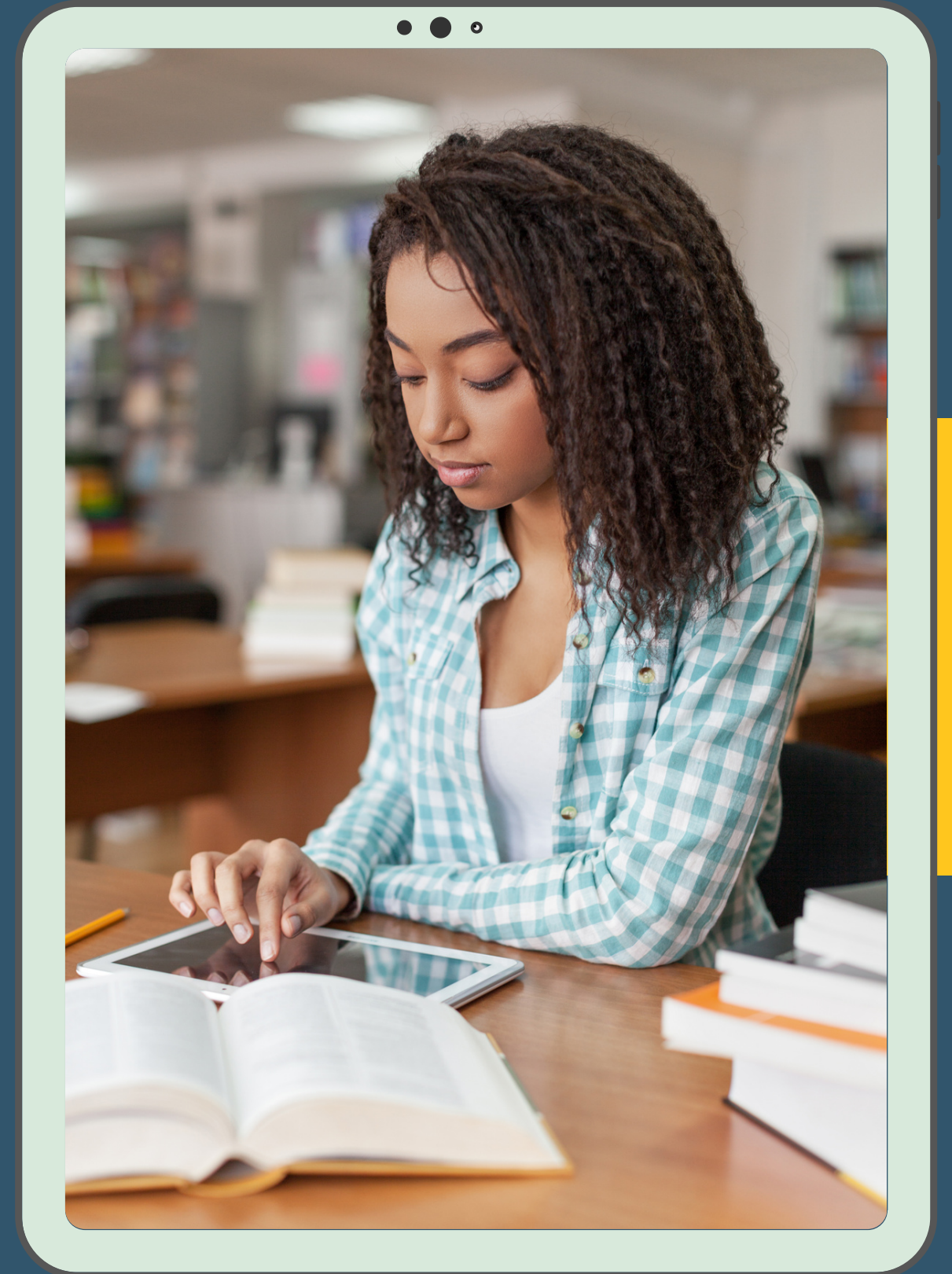
4 part series to support all faculty of dual credit students.



# Objectives

- Review dual credit handbook
- Discuss cognitive characteristics
- Discuss biological characteristics

*Session  
One*

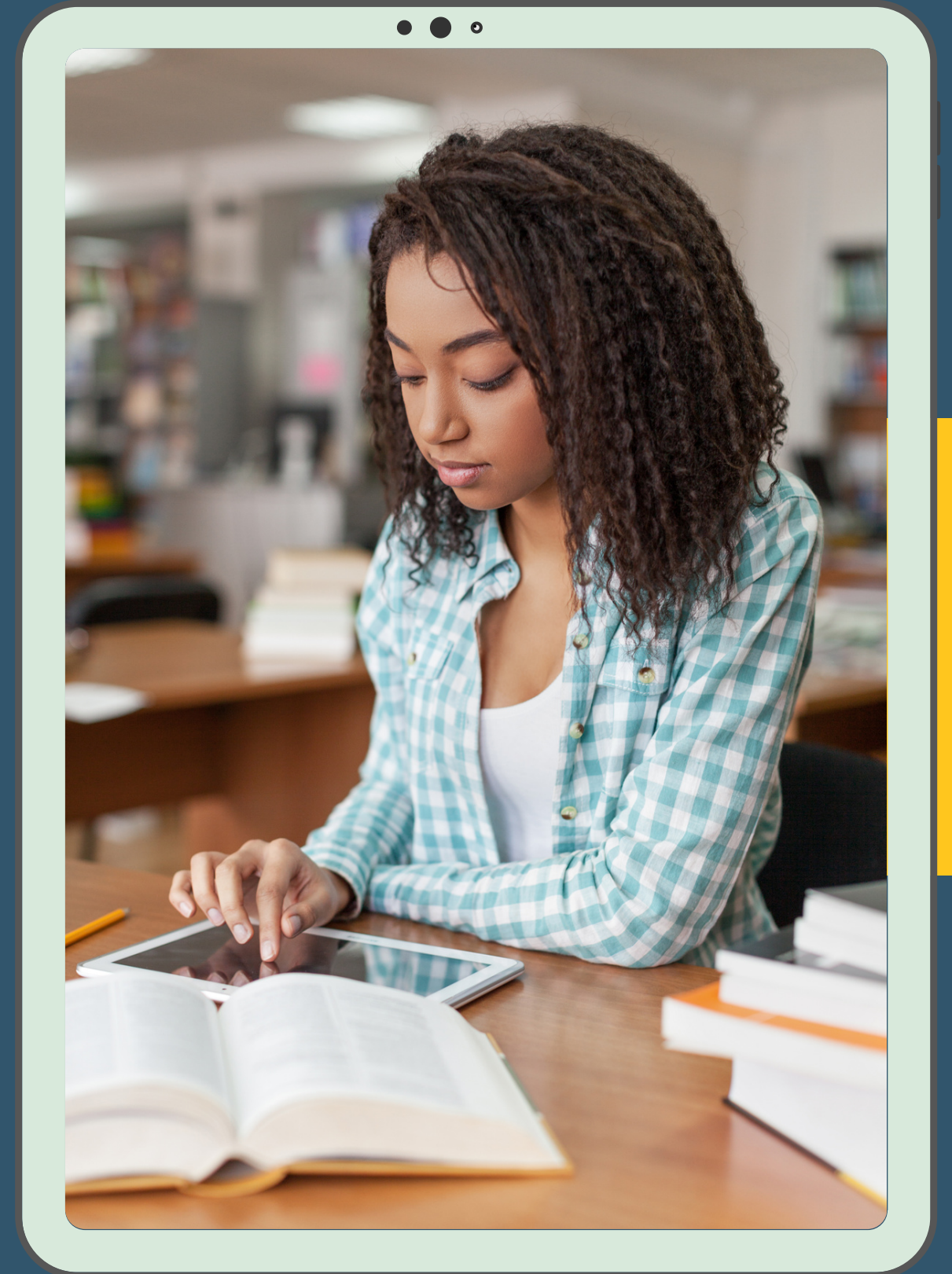




# Objectives

- Review socio-emotional characteristics
- Discussion with Dual Credit Directors

Session  
Two

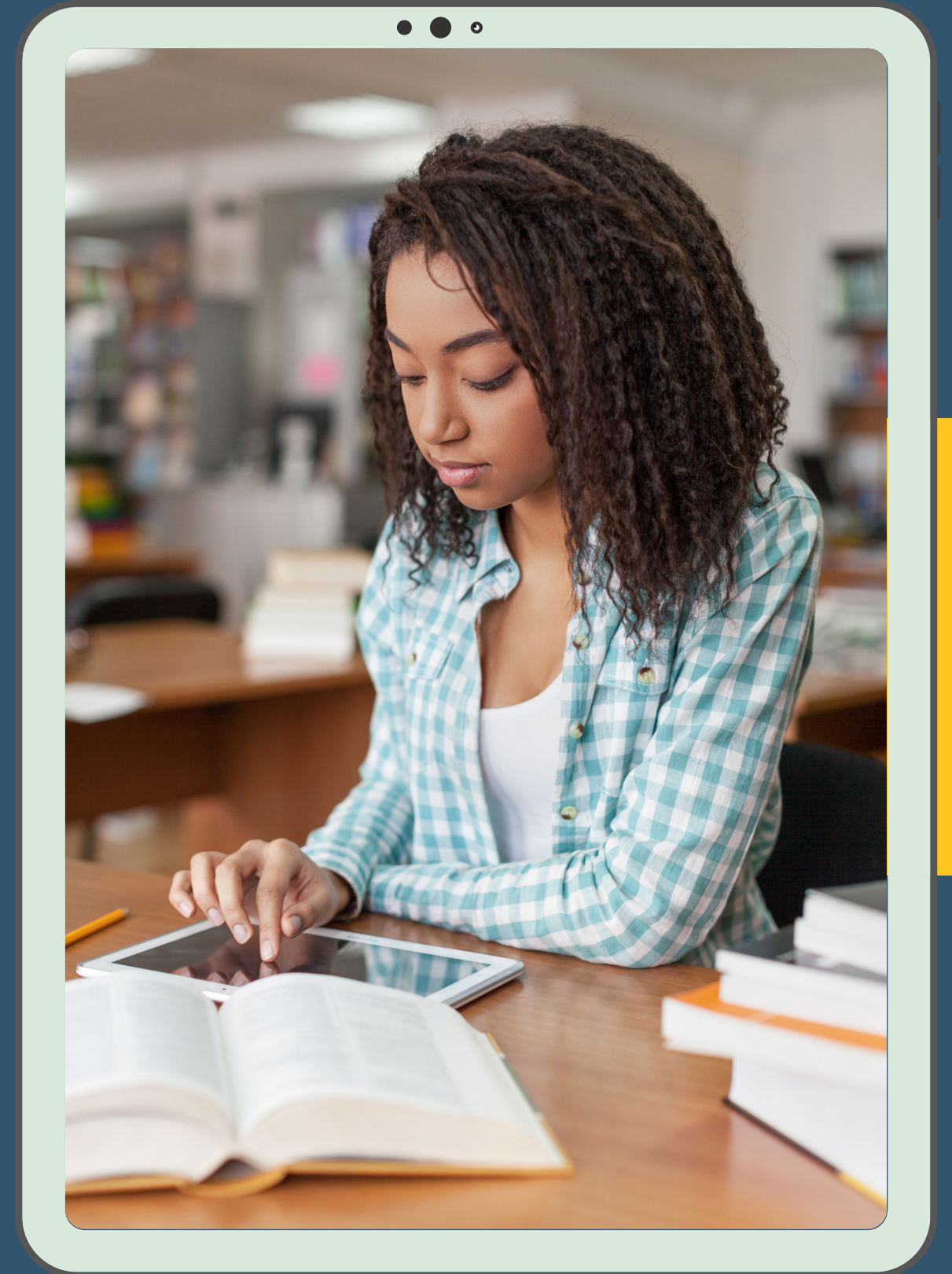




# Objectives

- Build Self-Awareness
- Learn Self-Management Tools
- Act on Purpose

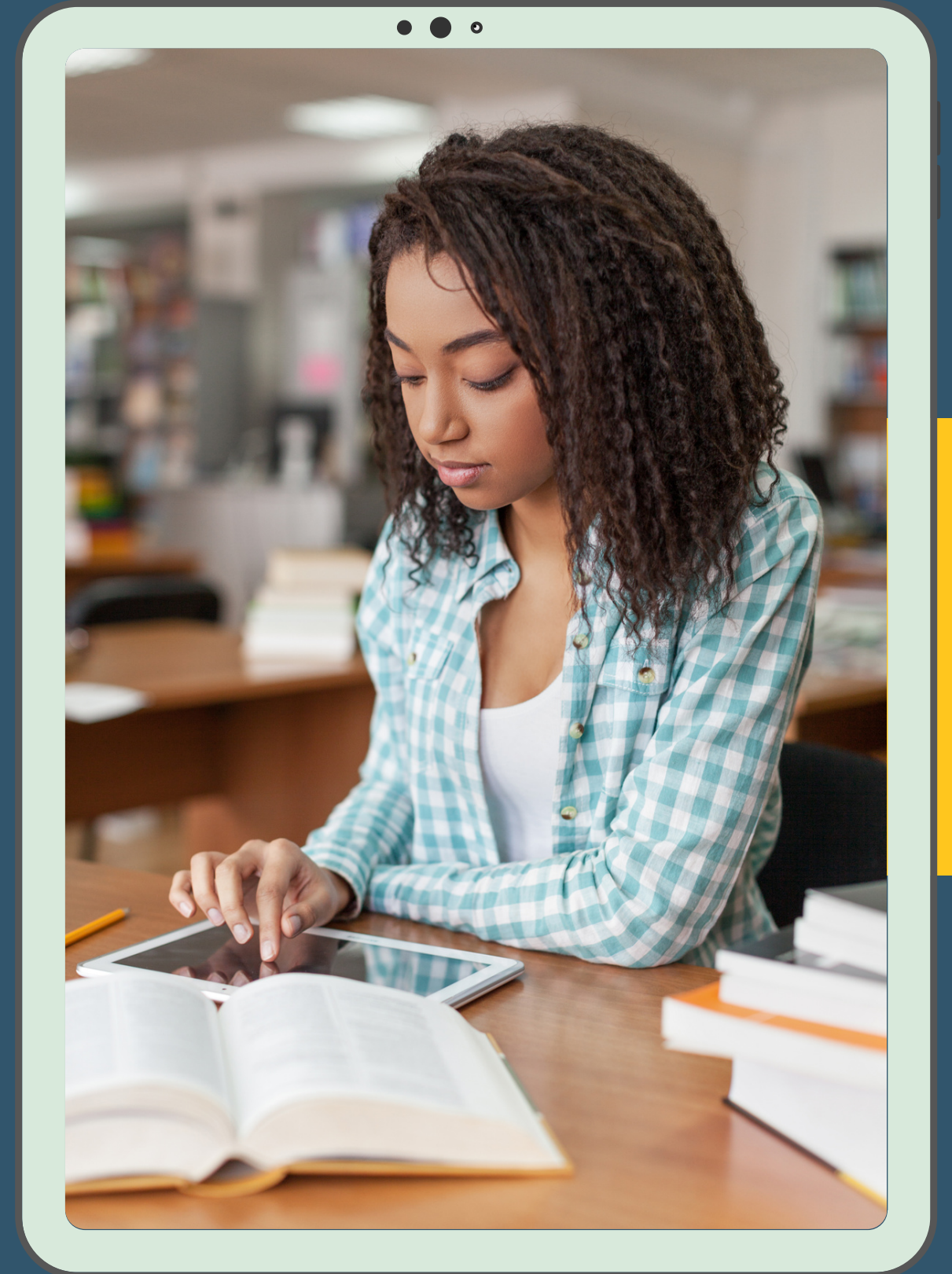
*Session  
Three*



# Objectives

- Celebrate
- Provide Feedback
- Develop an Action Plan

*Session  
Four*







## Values

**Integrity:** We Act Honorably & Ethically

**Inclusivity:** We Grow through Understanding

**Collaboration:** We Are Stronger Together

**Innovation:** We Embrace New Possibilities

**Accountability:** We Are Responsible Individually & Collectively

**Sense of Community:** We Care for Those We Serve

**Excellence:** We Strive for Outstanding Results

SAN JACINTO<sup>SM</sup>  
COLLEGE

*Any  
Questions?*



Crystal Tewes  
[crystal.tewes@sjcd.edu](mailto:crystal.tewes@sjcd.edu)