

TEXAS PATHWAYS INSTITUTE: KEEPING STUDENTS ON THEIR PATHWAY



Texas Success Center



Leveraging Community-Based Organizations to
Develop Holistic Supports for Adult Learners

Houston, Texas
April 7, 2022

PRESENTED BY
BRIANNE MCDONOUGH
ASHLEY BLISS-LIMA

PRESENTERS



BRIANNE MCDONOUGH

ASSOCIATE DIRECTOR,
JOBS FOR THE FUTURE



ASHLEY BLISS LIMA

ASSOCIATE DIRECTOR,
JOBS FOR THE FUTURE

AGENDA

Welcome and Introductions

JFF and the Student Success Center Network

JFF's Guided Career Pathways Framework

Introduction to Kresge and BOOST Project

BOOST Project Sites and Key Learnings

Final Discussion on Texas Pathways – Keeping Students on their Pathways

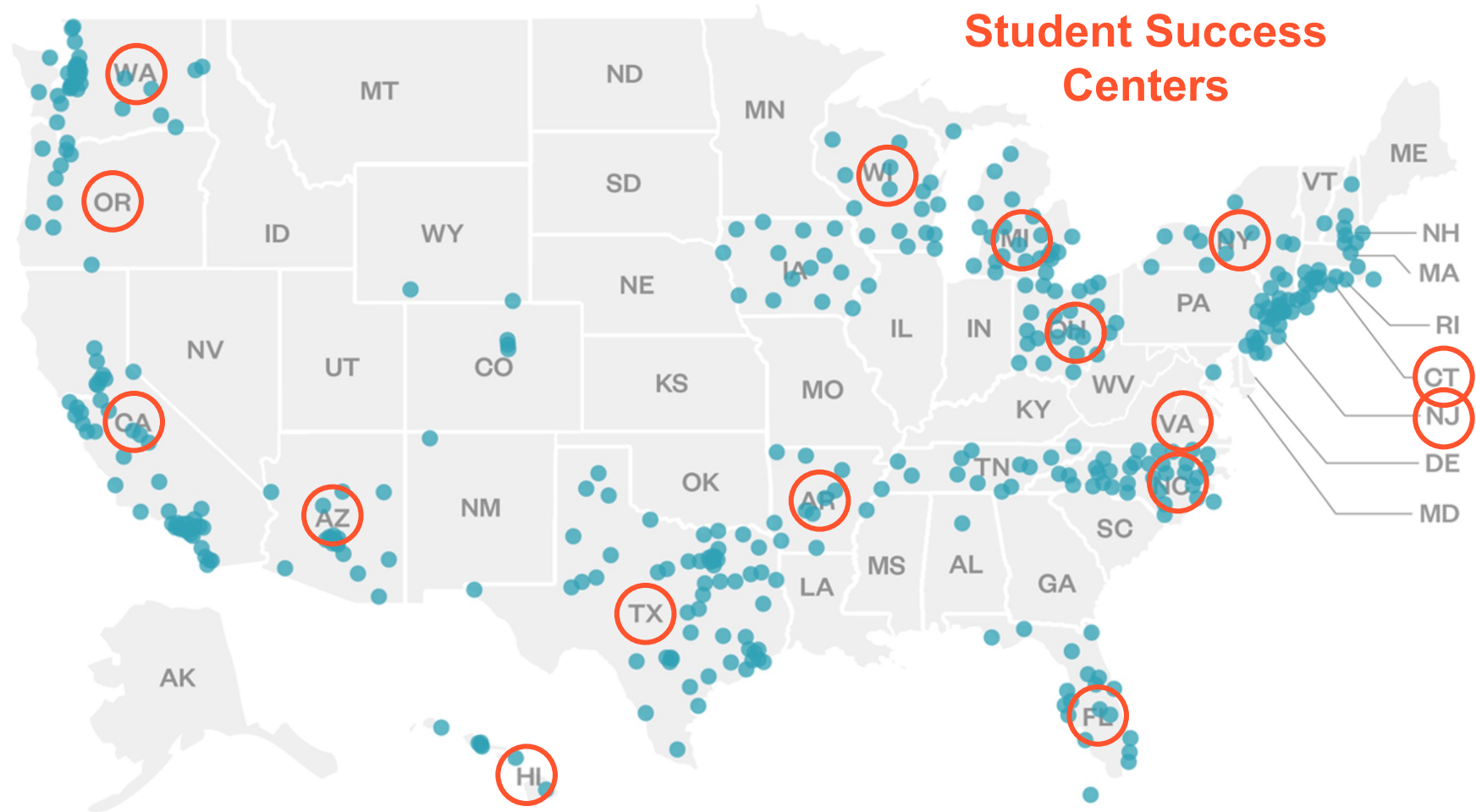
Wrap Up and Closing

Building a Future That Works



The Network's broad scale drives big impact.

Here's a map of the colleges implementing guided pathways today. States with support from a Student Success Center are marked in orange.



A photograph of a woman in a black graduation cap and gown with a red tassel, smiling and holding a young boy. The boy is looking up at her. The background is blurred, showing what appears to be a brick wall.

Guided Career Pathways: A New Postsecondary Framework for Today's Learners

Recognizing that community colleges must sharpen their focus on career outcomes to better serve today's learners as they navigate lifelong journeys of work and learning, JFF has developed a new postsecondary framework called Guided Career Pathways.

By Brianne McDonough

SECTIONS

[Introduction](#) • [Pillar 1](#) • [Pillar 2](#) • [Pillar 3](#) • [Pillar 4](#) • [Join Us](#)

Guided Career Pathways



Three Foundational Elements



Labor-market-informed pathways

that reflect regional and local economic needs and offer accelerated paths into employment and opportunities to advance.



Expanded outreach, on-ramps, support strategies, and flexible learning models

to better serve adult students and ensure equitable outcomes for learners and workers across racial and socioeconomic lines.



Integrated work and experiential learning strategies

to improve students' workforce outcomes, build opportunities to earn income, and receive credit for what's learned on the job.



Guided Pathways



Create clear curricular pathways to employment and further education.



Help students choose and enter their pathway.



Help students stay on their path.



Ensure that learning is happening with intentional outcomes.



Guided Career Pathways

.... and offer opportunities for ongoing skill development to support career mobility.

...build on prior experience, explore career options, and connect with work.

... pursue transfer goals, and design programs with the flexibility to allow learners to reenter at any point.

...and assessment in both the classroom and work-based settings.



GUIDED CAREER PATHWAYS

DISCUSSION ACTIVITY

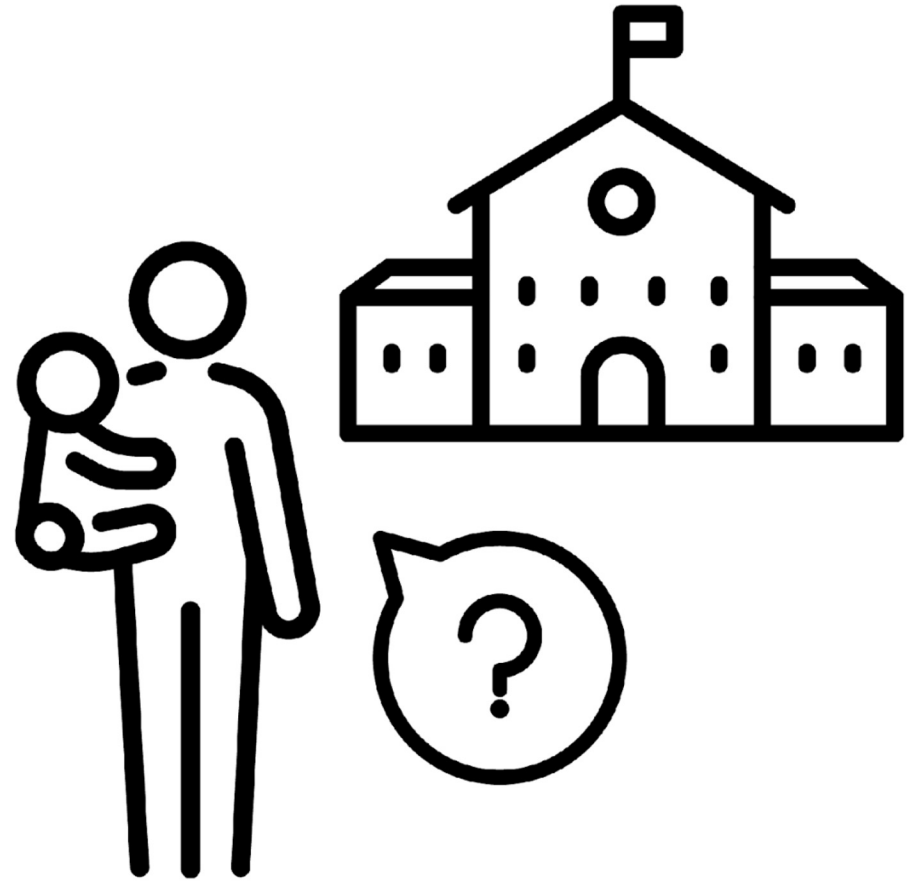
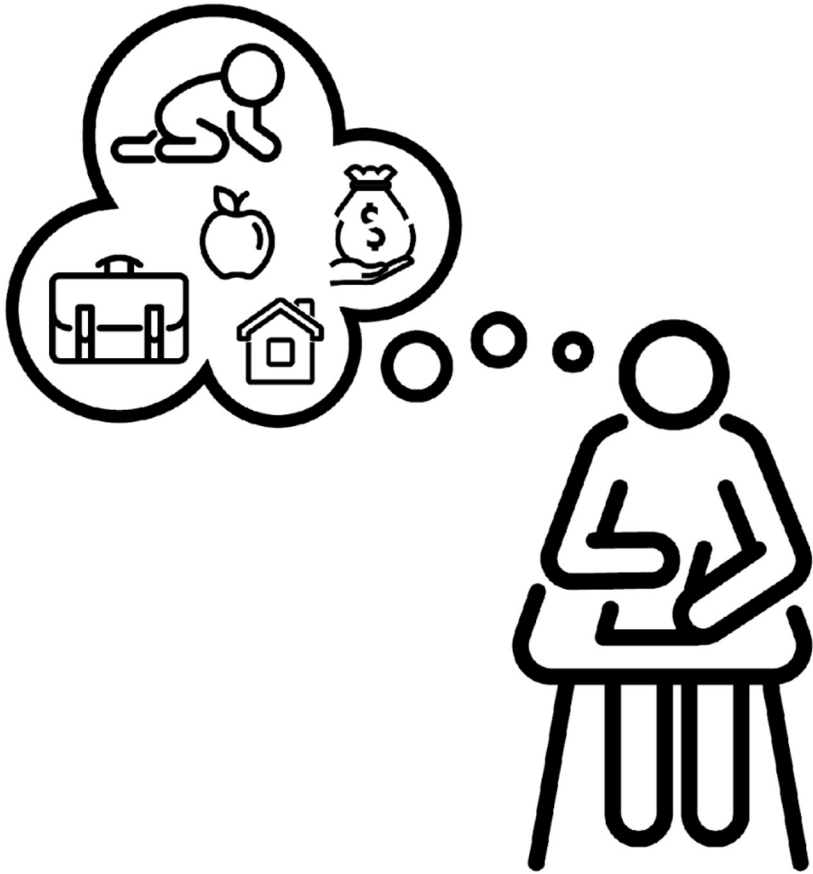
- What resonates with you in terms of how we have added to the guided pathways pillars to center credential quality and post-graduation (employment outcomes)?
- Which of the three foundational elements is your institution focused on? Which could be strengthened? Share examples at your table.
 - Labor market informed design as a whole-college data driven approach
 - Expanded outreach, holistic support, and flexible learning options to better serve adults and all students more effectively
 - Integrating work-based and experiential learning opportunities

THE
KRESGE
FOUNDATION

BOOST

*Boosting Opportunities for Social and
Economic Mobility for Families*

Why BOOST?



BOOST Core Tenets Lead to Social & Economic Mobility



Partnership



Learning



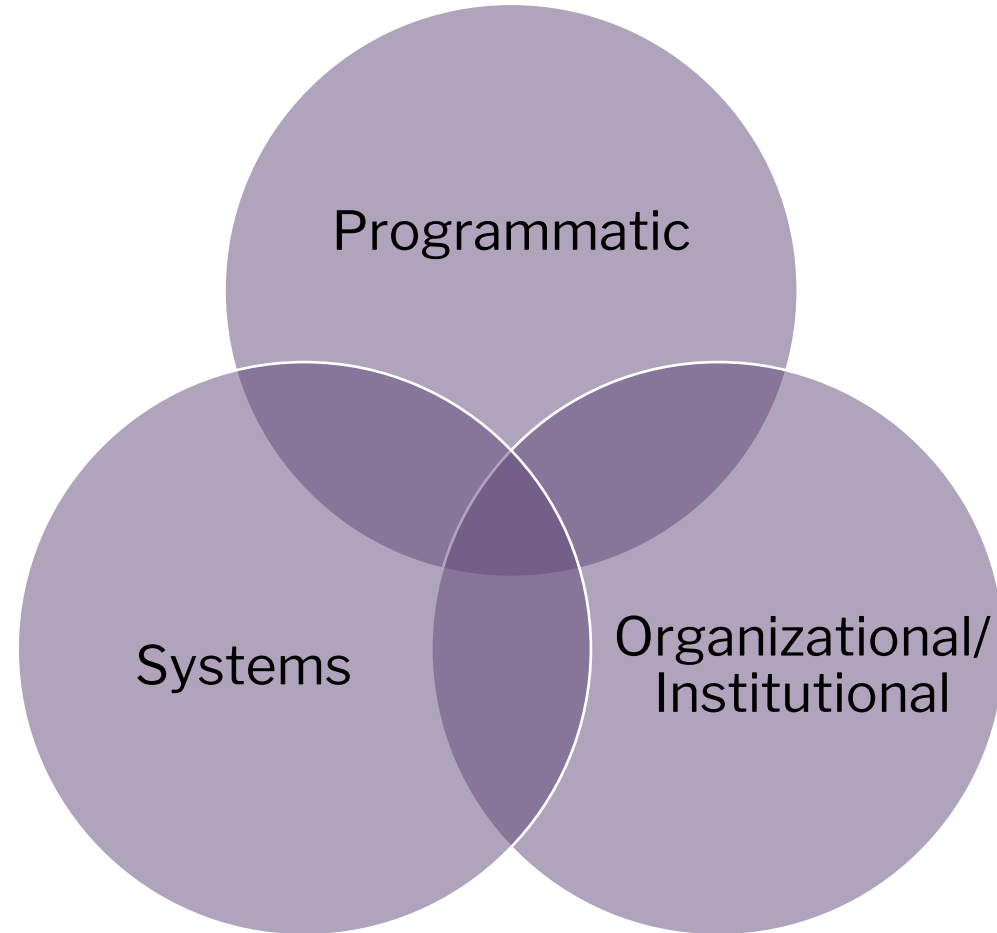
Lifetime &
Springboard
Jobs



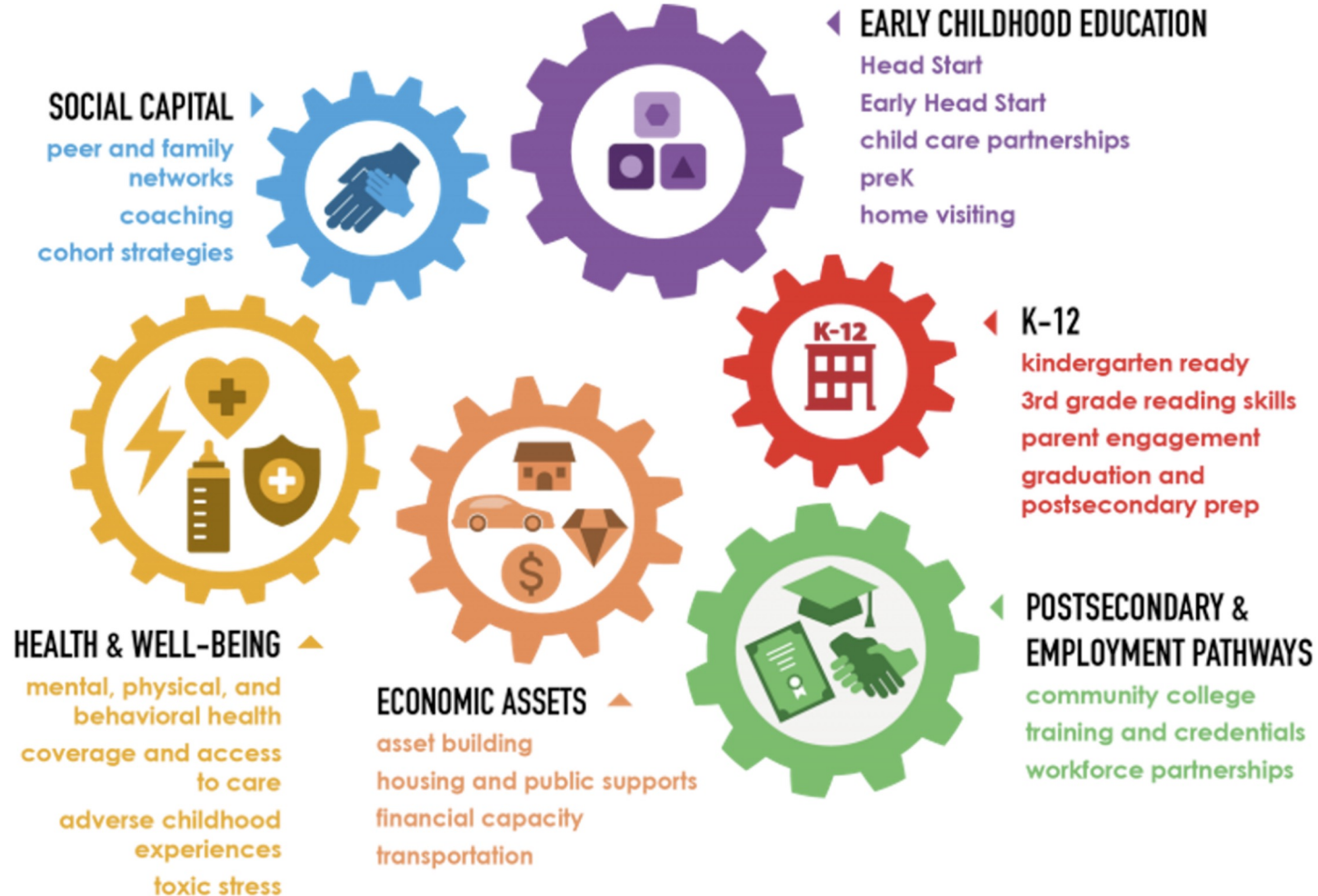
Sustainability

2Gen/Whole Family & Racial Equity Lens

Purpose and Vision of BOOST – Making Change



Introduction: 2Gen Components



BOOST LOCATIONS AND PARTNERS



Capital Community College and
Catholic Charities Archdiocese of Hartford
(Hartford, Connecticut)



Baltimore County Community College and
Center for Urban Families
(Baltimore, Maryland)



Northeast Wisconsin Technical College and
Forward Service Corp
(Green Bay, Wisconsin)



BOOST LOCATIONS AND PARTNERS CONT'D



Onondaga Community College and PEACE
(Syracuse, New York)



Portland Community College and Albina
Head Start
(Portland, OR)



LaGuardia Community College and
Commonpoint Queens
(Long Island City, NY)



OPPORTUNITIES

- Creation of bridge programs from adult basic education courses into college credit-bearing program pathways
- Joint enrollment information sessions offered in partnership with CBOs/colleges alongside application support
- Streamlined resources for student holistic support and long-term case management
- Specialized support for students/clients who face unique barriers or challenges
- Positive results allow for case-making and integration into strategic priorities at the colleges

LESSONS LEARNED

- Need influential leadership engaged at the highest level
- Project teams should include multiple individuals from both partners - and the right people!
- Infrastructure and systems work across organizations requires regular communication and collaborative design
- Iterative process - working towards continuous improvement ie. shifting approaches due to pandemic
- Building trust at and across partners sites is critical and requires a commitment to students/clients
- Sustainability planning is important as they approach year 3 of the funded project phase



DISCUSSION ACTIVITY

- What did you find compelling about the examples shared?
- What related programs does your college or organization work with to support adult learners to gain skills/credentials for employment?
- What additional opportunities and learnings would you add based on your experience working with CBOs?

1. Map Paths to Student End Goals

- Multiple entry points
- Default program maps
- Completion, further education, employment
- Guides through transitions and transfer

.... and offer opportunities for ongoing skill development to support career mobility.

2. Help Students Choose and Enter a Program Path

- College readiness in 1st year
- Career exploration
- Early contextualization
- Accelerated remediation for most poorly prepared

...build on prior experience, explore career options, and connect with work.

3. Keep students on paths

- Strong, inescapable advising
- Clarity for education and career choices
- Predictable schedules
- Early intervention
- Academic and non-academic support

... pursue transfer goals, and design programs with the flexibility to allow learners to reenter at any point.

4. Ensure students are learning

- Program learning outcomes aligned with careers and further education
- Internships and apprenticeships
- Active culturally competent teaching practices

...and assessment in both the classroom and work-based settings.

TEXAS CONTEXT

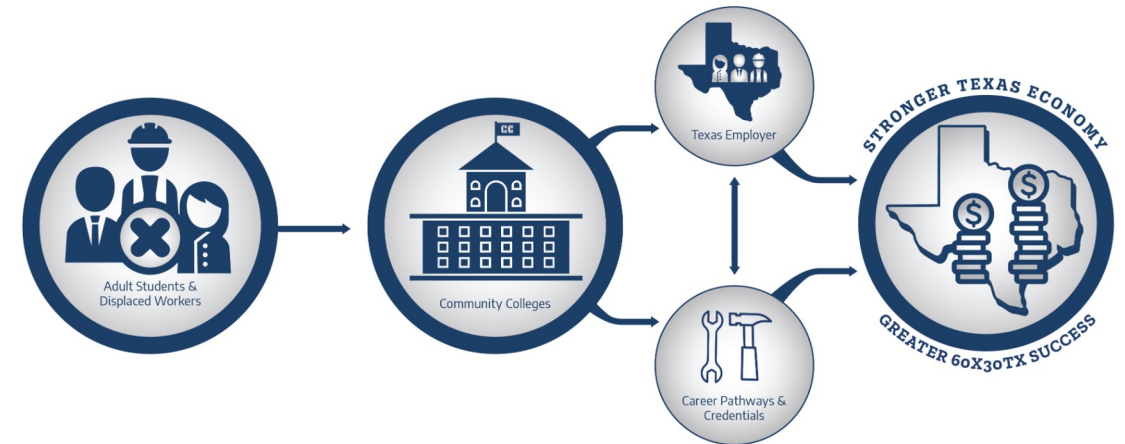
OPPORTUNITIES TO EVOLVE PATHWAYS

Texas Reskilling & Upskilling through Education (TRUE)

Established a statewide Business Advisory Council (BAC) to provide strategic guidance in three key areas:

- Provide insight to changes in the economy and job market (job growth and skills)
- Provide support, strategic guidance, and advocacy in establishing and advancing the TRUE Initiative.
- Advise on policy changes providing guidance in advancing the components of the TACC legislative priorities in support of a stronger Texas economy.

TRUE Upskilling and Reskilling through Education Model





FINAL DISCUSSION

- What are the ways in which these short-term career focused strategies can leverage the existing network of Texas TRUE partners – what possible collaborations can you envision?

PRESENTERS



BRIANNE MCDONOUGH

ASSOCIATE DIRECTOR,
JOBS FOR THE FUTURE

bmcdonough@jff.org



ASHLEY BLISS LIMA

ASSOCIATE DIRECTOR,
JOBS FOR THE FUTURE

ablisslima@jff.org