



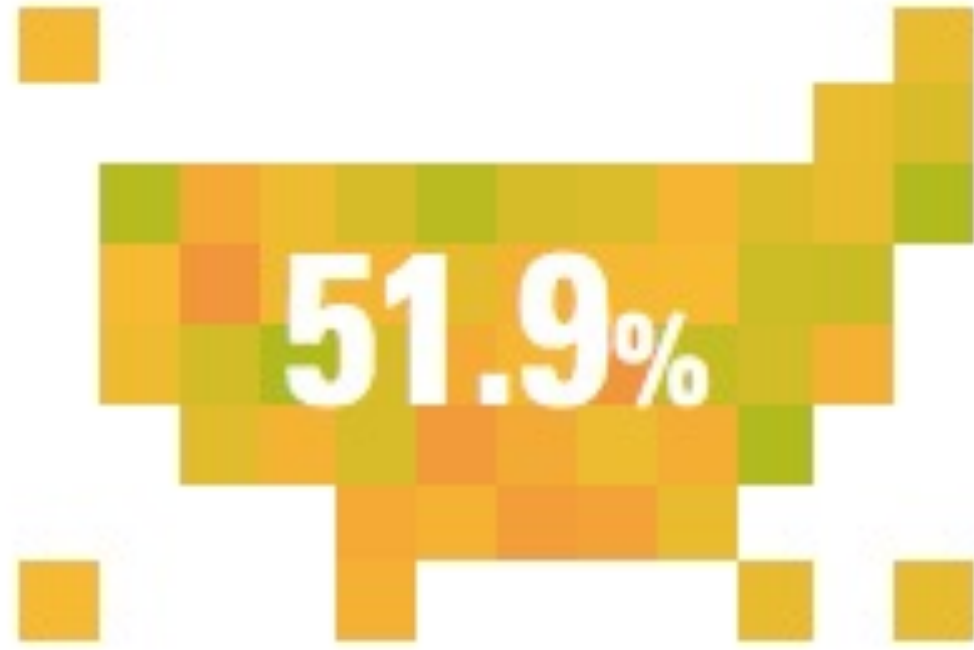
Texas Pathways Institute

Chauncy Lennon

Nov. 3, 2021



60% of adults (ages 25-64) have a credential of value by 2025



TEXAS ATTAINMENT

TEXAS GOAL

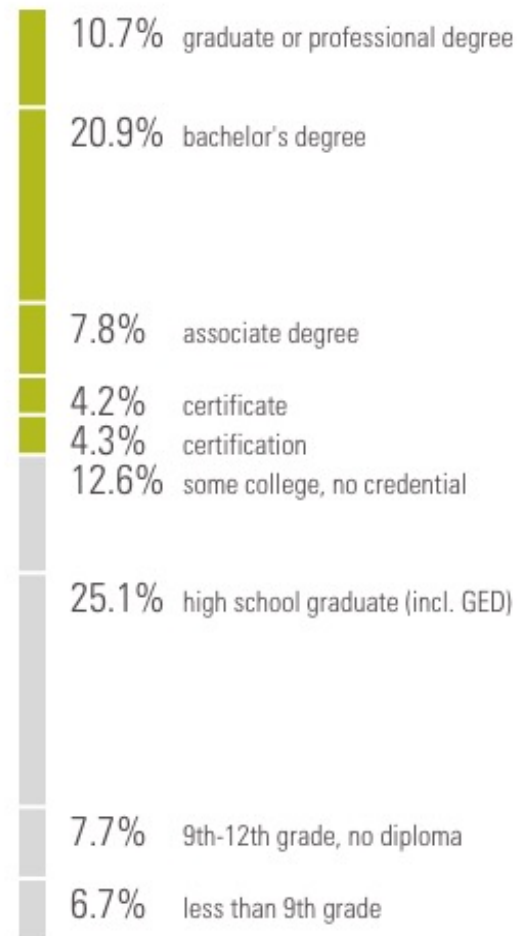


39.5%*

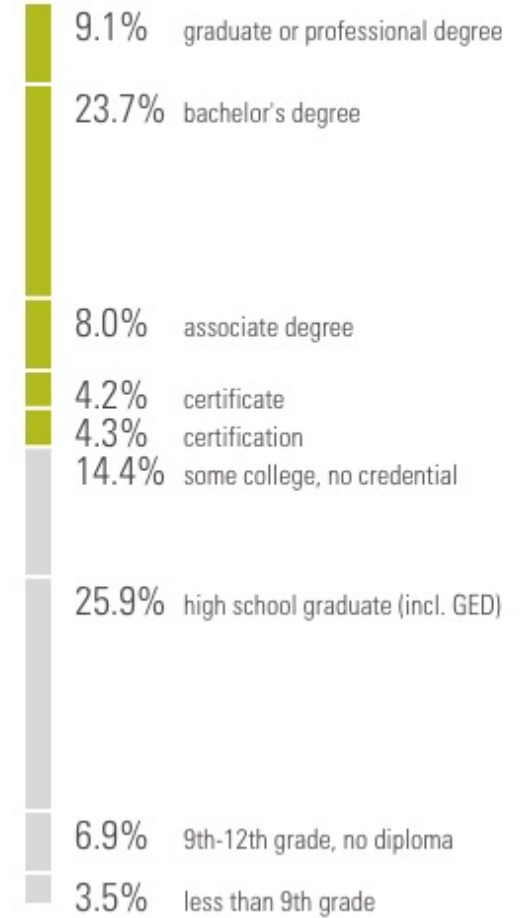
47.9%

Not Everyone Goes Right Away: 25% of Texans have HS Diploma or GED

2019 EDUCATION DISTRIBUTION
TX RESIDENTS AGES 25-64



2019 EDUCATION DISTRIBUTION
TX RESIDENTS AGES 25-34



Not “One and Done”

	Certification	Certificate
Some College, No Degree	6%	15%
AA	9%	17%
BA	8%	5%
GRAD	10%	3%

Cronen, S., McQuiggan, M., and Isenberg, E. (2017). *Adult Training and Education: Results from the National Household Education Surveys Program of 2016* (NCES 2017-103), National Center for Education Statistics, Institute of Education Sciences, U.S. Department of Education.

Washington, DC. Retrieved from <http://nces.ed.gov/pubsearch>.

1/2 of working adults attended community college,
1/4 of them did so as adults

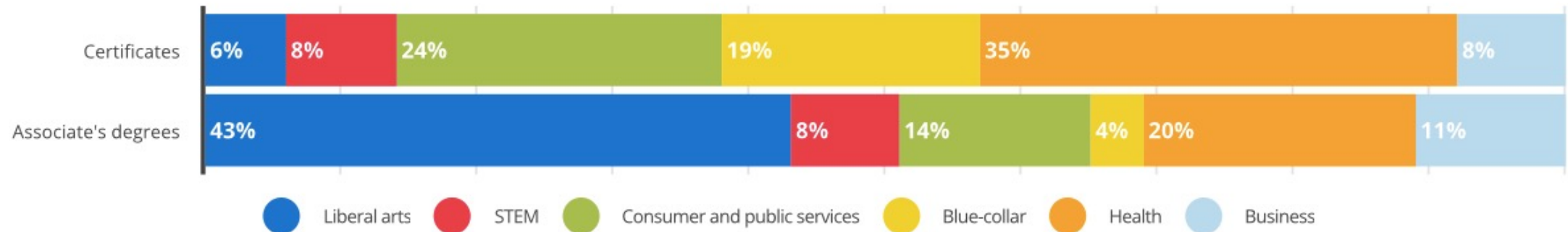
Community College Attendance

Attendance Status	Percentage of Students
Ever attended (%)	48.4
Attended only after high school (%)	21.9
Attended only as an adult (%)	15.1
Attended both after high school and as an adult (%)	11.1

Source for all tables: 2020 American Training Survey, in which the sample is employed adults ages 24–64.

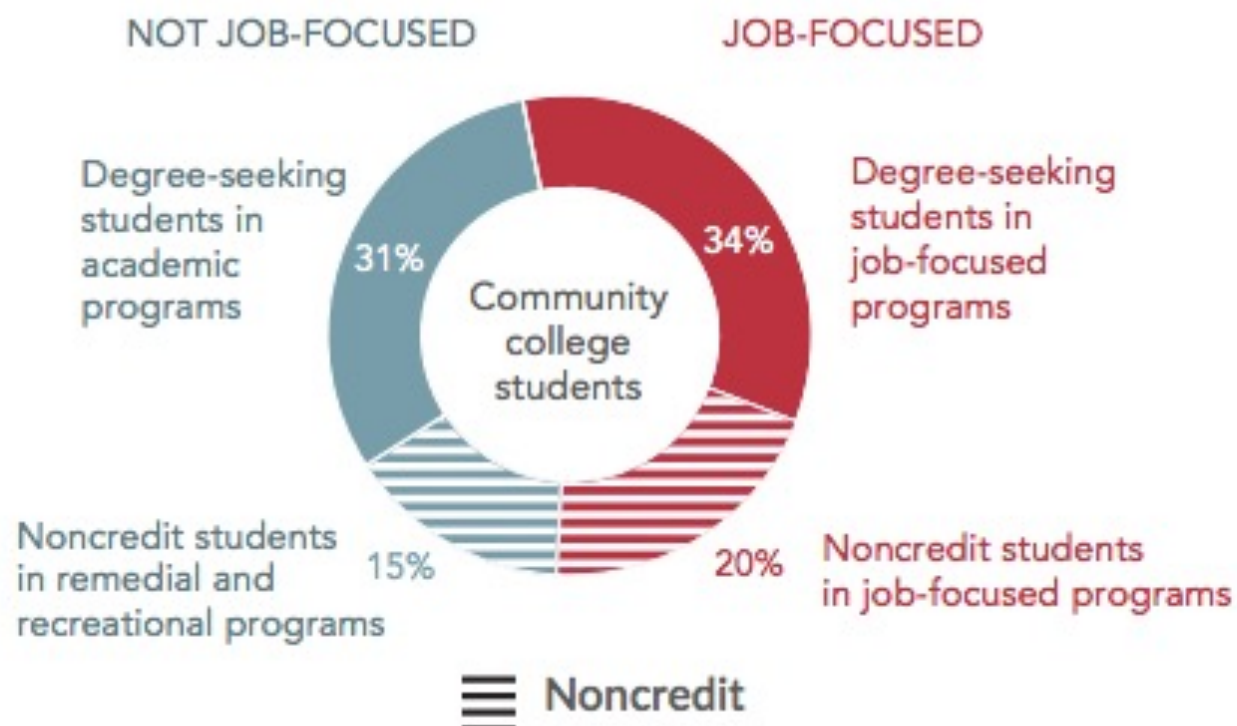
Osterman, Paul. (2021) CCRC Research Brief: Patterns of Community College Use Among Working Adults.
<https://ccrc.tc.columbia.edu/publications/patterns-community-college-working-adults.html>

94% of Certificates and 57% of Associate Degrees are in Career-Oriented Fields



Georgetown University Center on Education and the Workforce, *The Overlooked Value of Certificates and Associate's Degrees: What Students Need to Know Before They Go to College*, 2020.

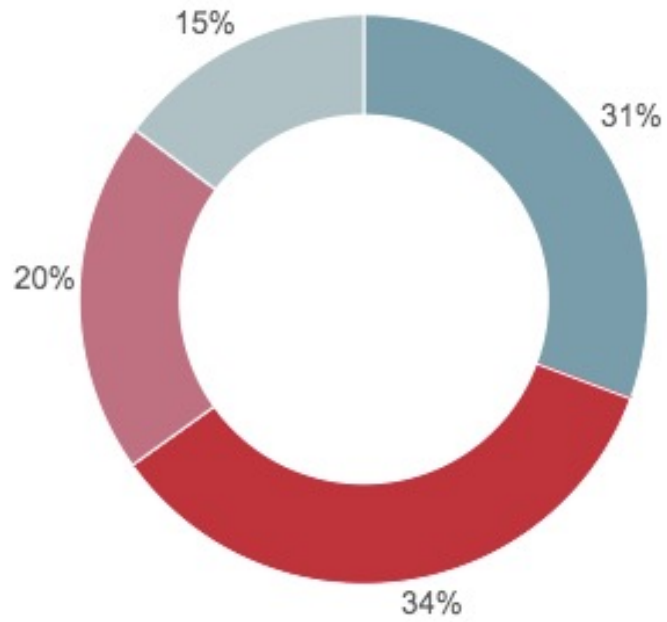
Community college enrollments by type of program and college division, 2019



Note: Data include noncredit students in customized contract training. N = 455 responding colleges.

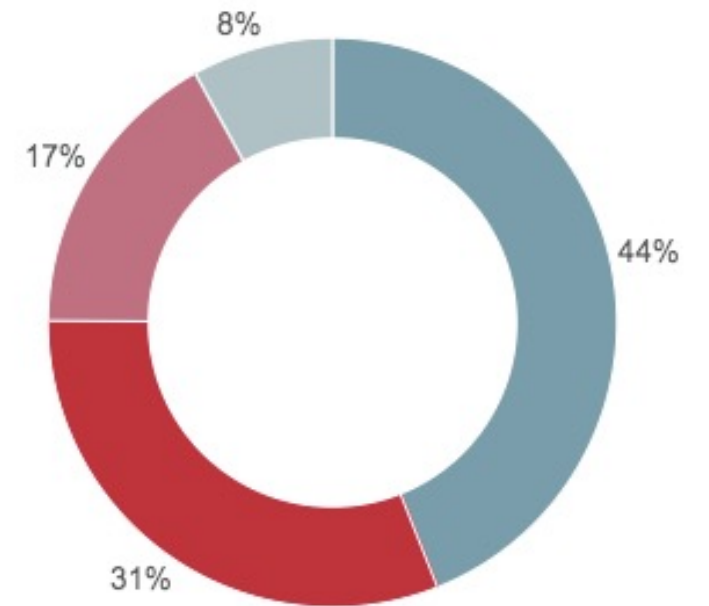
Source: Opportunity America community college survey and Opportunity America calculations based on National Student Clearinghouse Research Center, "Fall 2019 Current Term Enrollment Estimates."

US average

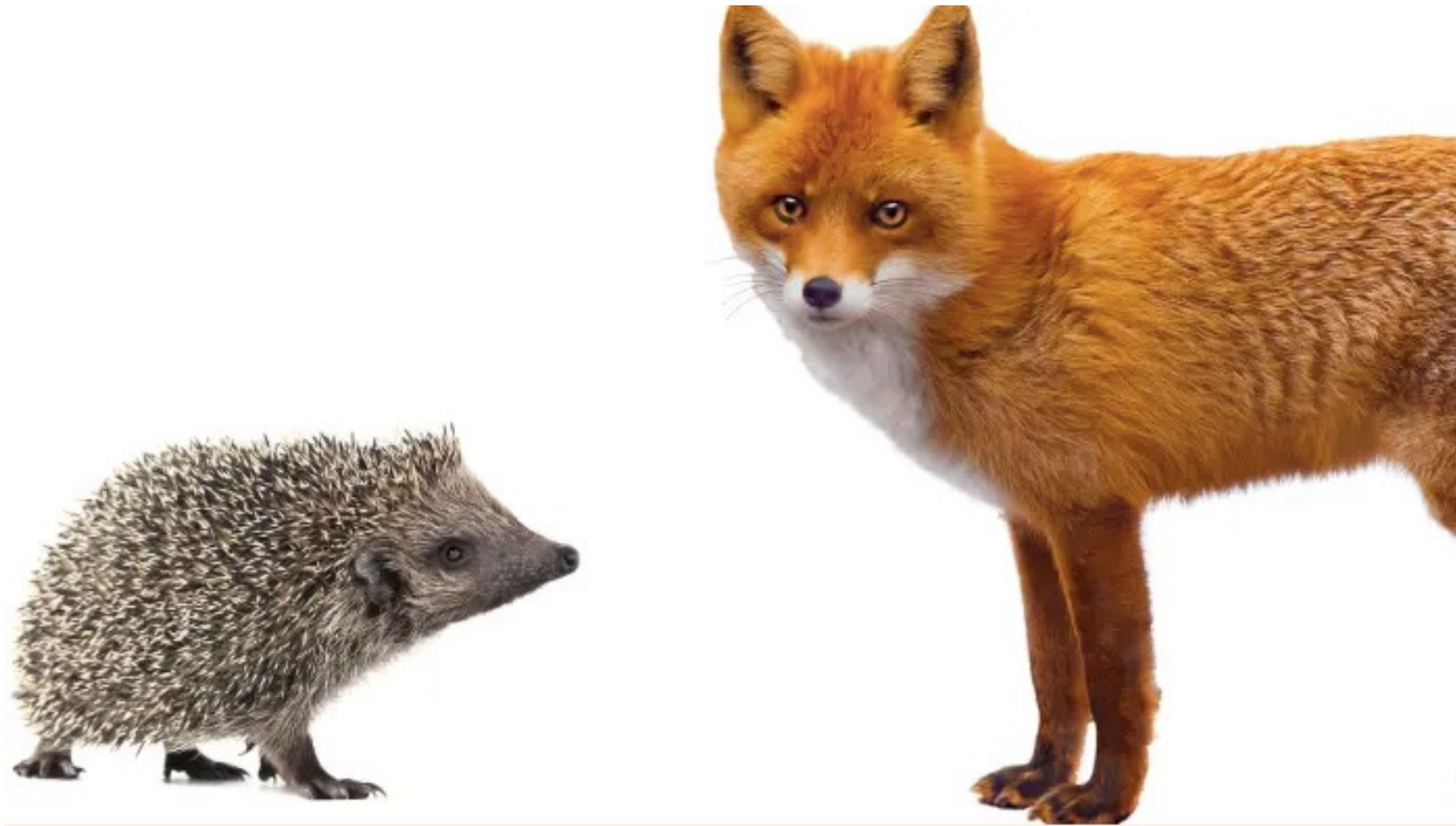


- Degree-seeking students in academic programs
- Degree-seeking students in job-focused programs
- Noncredit students in job-focused programs
- Noncredit students in remedial and recreational programs

Texas



The fox knows many things, the hedgehog knows one big thing

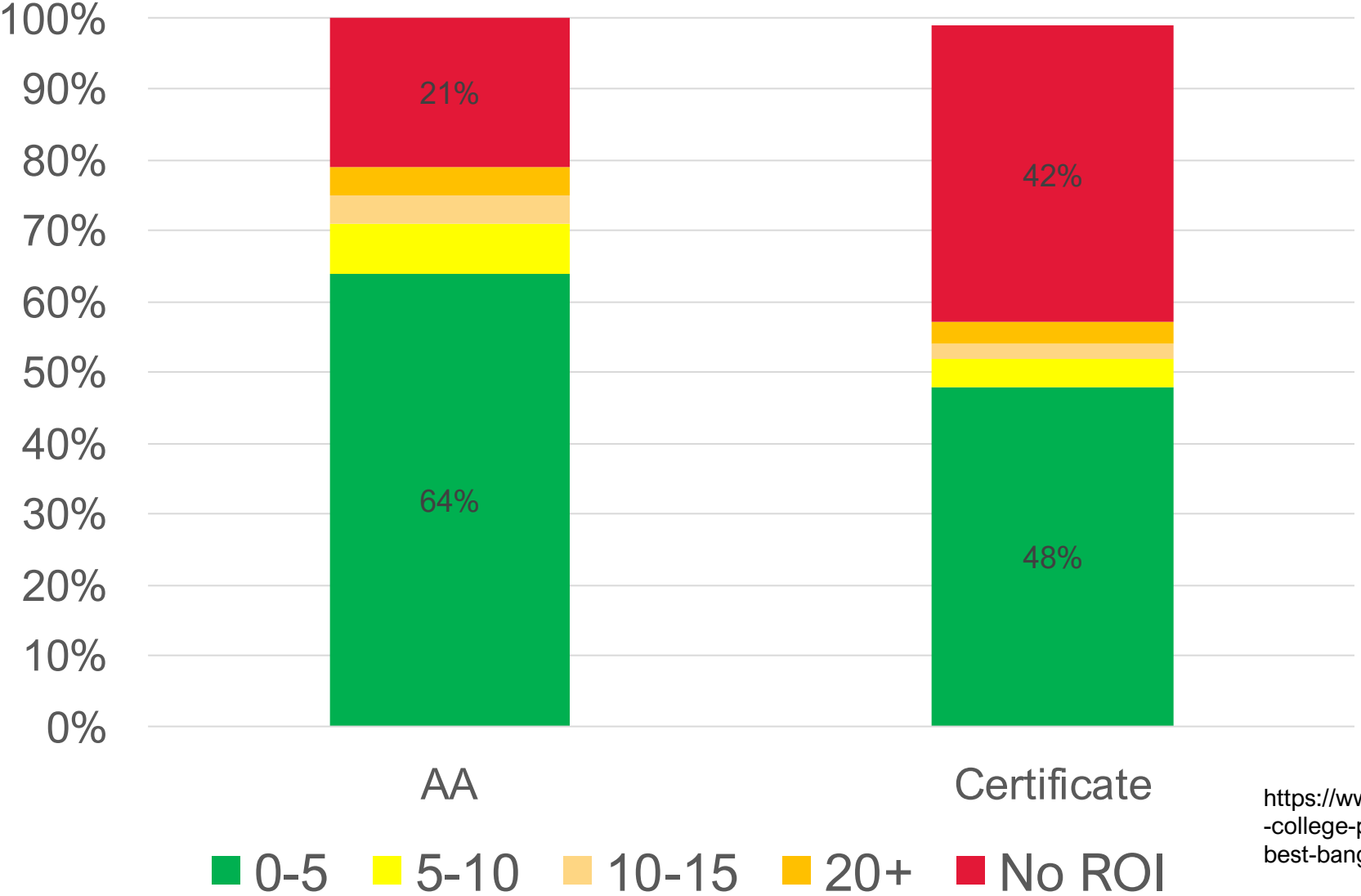


Utilization of Training Venues (Not Required by Employer) as an Adult

	Ever used as an adult	Used five or more years prior to survey	Used less than five years prior to survey	Used in the past year
Community colleges (%)	19.5	13.1	6.3	1.8
Four-year colleges (%)	14.9	8.7	6.1	2.2
Proprietary schools (%)	14.3	7.0	7.3	2.5
Online programs (%)	29.3	3.8	25.5	15.0
Online programs, paid or unpaid courses ^a (%)	22.3	2.8	19.5	11.2
Job training programs (%)	11.8	3.0	8.7	4.1
Union programs (%)	3.8	1.8	1.9	0.8

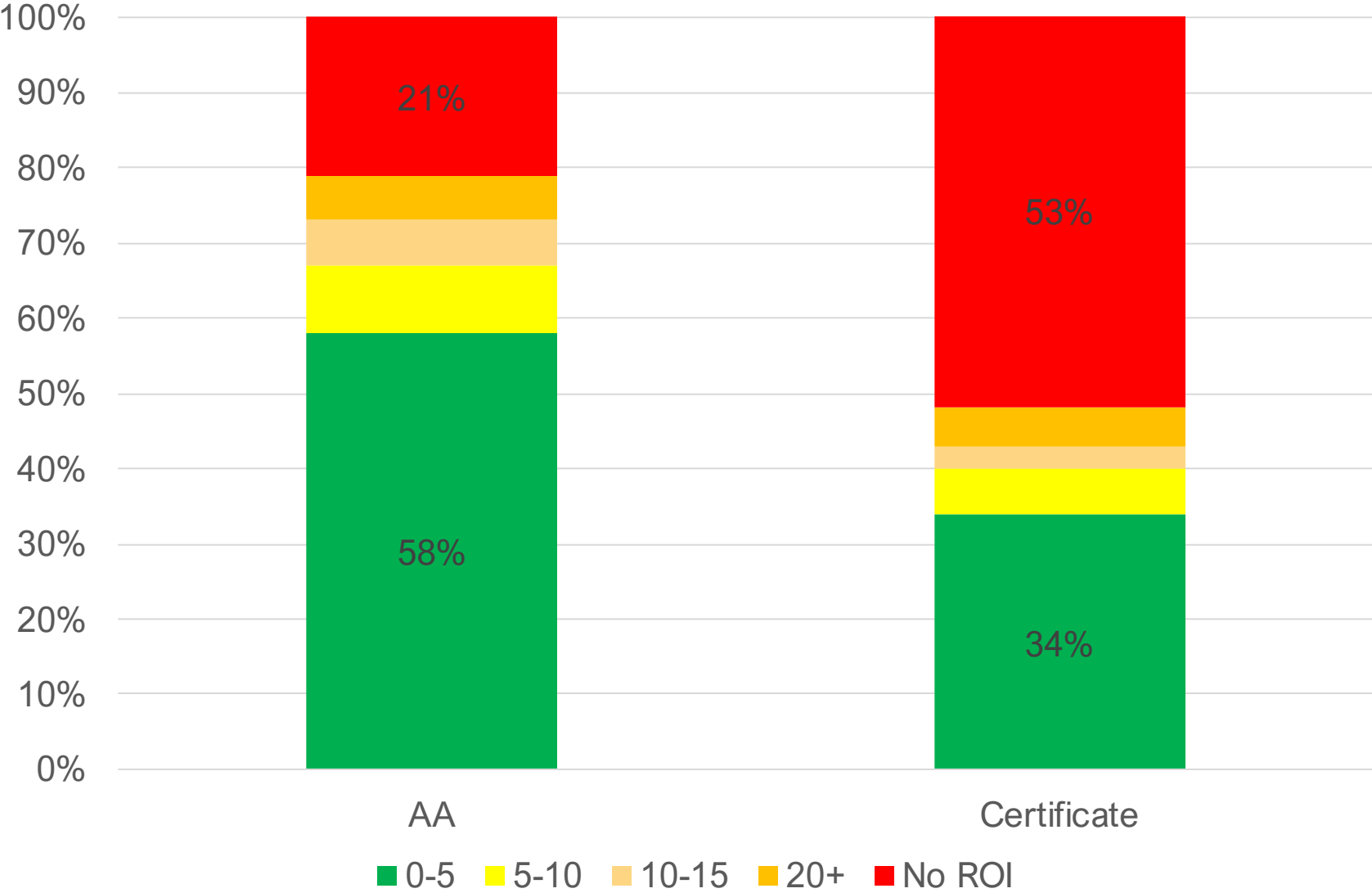
^aDoes not include YouTube or similar venues.

Short-term Program ROI on AA and Certificates



<https://www.thirdway.org/report/which-college-programs-give-students-the-best-bang-for-their-buck>

Student ROI on AA and Certificates





If you build it, they will come



TEXAS ASSOCIATION OF COMMUNITY COLLEGES

| News

Texas Community Colleges Selected by Lumina Foundation for National Collaborative Focused on Creating Equitable Credential Pathways for Adults of Color

REACH
collaborative



RACIAL
EQUITY for
ADULT
CREDENTIALS in
HIGHER ED