

Metrics that Matter: Diving Deeper into the Postsecondary Data Partnership in Texas



**Measure institutional and student outcomes.
Grow student success.**

Today's Presenters



Dr. Lisa Stich
Senior Specialist, Data
Partnerships
Postsecondary Data Partnership
National Student Clearinghouse
stich@studentclearinghouse.org



Martin Fortner
Director of Institutional
Research & Effectiveness
Northeast Lakeview College
mfortner3@alamo.edu



Brandi Solar
IT Data Analyst
Northeast Lakeview
College
bsolar@alamo.edu

Today's Agenda

- *Welcome from the Texas Success Center*
- *Brief Overview of the PDP*
- *Dive Into the Using the Dashboards for Data-Informed Decision Making*
- *How Northeast Lakeview College is Using the PDP to make a difference*
- *Q & A*

Housekeeping details:
Please make sure you are on Mute.
Add questions to the Chat.

Postsecondary Data Partnership

Measure institutional outcomes. Grow student success.



“Clearly, no single strategy works everywhere. . . . No longer just the stuff of institutional reports to various government agencies, **data are used throughout institutions to mobilize actions.**”

EDUCATION TRUST HIGHER EDUCATION PRACTICE GUIDE #2

**Using Data to Improve Student Outcomes:
Learning From Leading Colleges**

Wanted: Better Data for Better Student Outcomes

Institute for Higher Education Policy A FIELD-DRIVEN METRICS FRAMEWORK

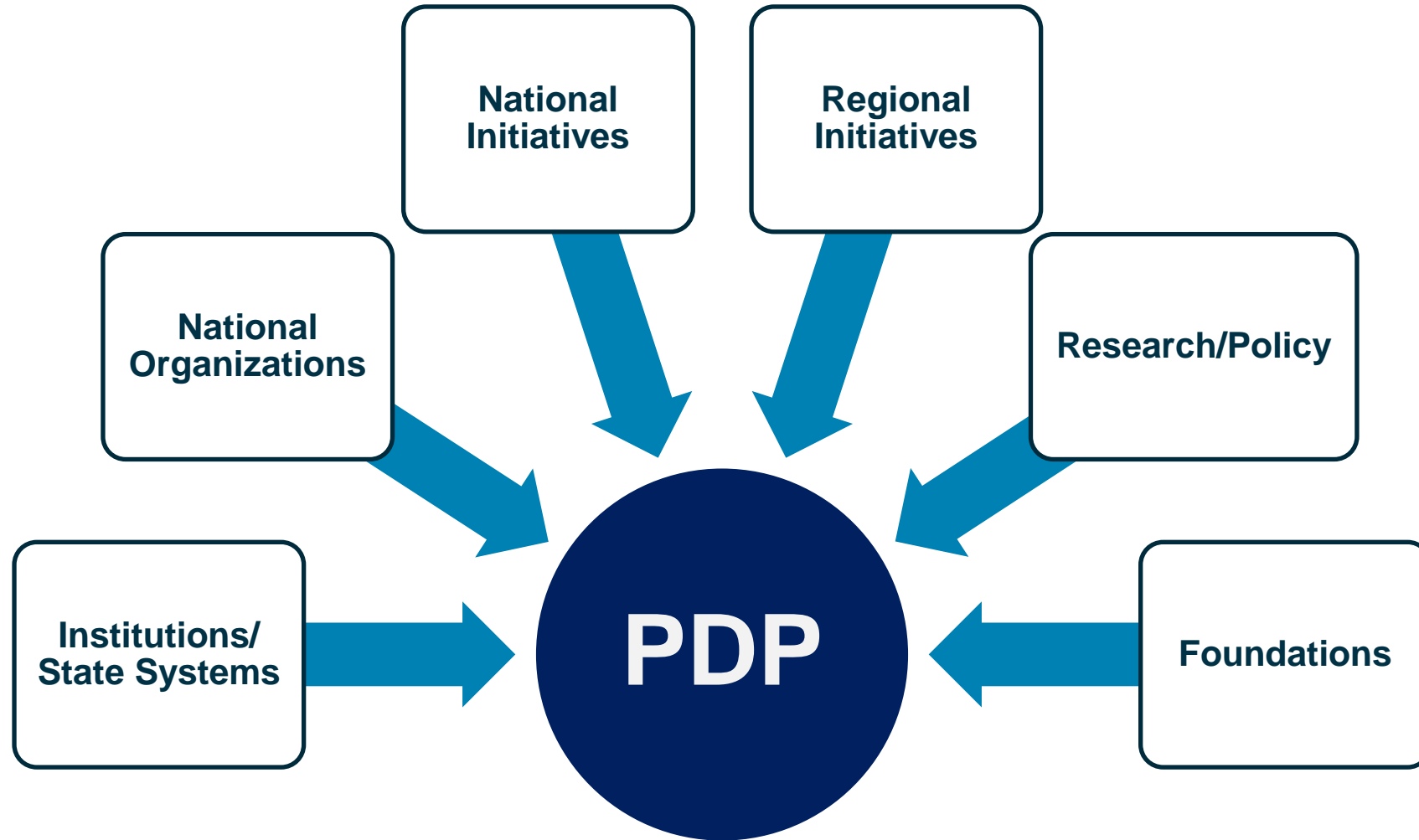
	ACCESS	PROGRESSION	COMPLETION	COST	POST-COLLEGE OUTCOMES
PERFORMANCE	<ul style="list-style-type: none"> Enrollment 	<ul style="list-style-type: none"> Credit Accumulation Credit Completion Gateway Course Completion Program of Study Selection Retention Rate Persistence Rate 	<ul style="list-style-type: none"> Transfer Rate Graduation Rate Success Rate Completers 	<ul style="list-style-type: none"> Net Price Unmet Need Cumulative Debt 	<ul style="list-style-type: none"> Employment Rate Earnings Loan Repayment Graduate Education Learning Outcomes
EFFICIENCY	<ul style="list-style-type: none"> Expenditures per Student 	<ul style="list-style-type: none"> Cost of Uncompleted Credits Gateway Course Costs Change in Revenue from Change in Retention 	<ul style="list-style-type: none"> Time/Credits to Credential Cost of Excess Credits Completion per Student 	<ul style="list-style-type: none"> Student Share of Cost Expenditures per Completion 	<ul style="list-style-type: none"> Earnings Threshold
EQUITY	<ul style="list-style-type: none"> Enrollment Performance by at least Preparation, Economic Status, Age, Race/Ethnicity 	<ul style="list-style-type: none"> Progression and at least by Preparation, Economic Status, Age, Race/Ethnicity 	<ul style="list-style-type: none"> Completion and Efficiency by at least Preparation, Economic Status, Age, Race/Ethnicity 	<ul style="list-style-type: none"> Net Price and Unmet Need by at least Economic Status Debt by at least Economic Status, Age, Race/Ethnicity, Completion Status 	<ul style="list-style-type: none"> Outcomes Performance and Efficiency by at least Economic Status, Age, Race/Ethnicity, Completion Status
Key Student Characteristics			Key Institutional Characteristics		
<ul style="list-style-type: none"> Enrollment Status Attendance Pattern Credential-Seeking Status Program of Study Academic Preparation 	<ul style="list-style-type: none"> Economic Status Race/Ethnicity Age Gender First-Generation Status 	<ul style="list-style-type: none"> Student Level Degree Program Mix Institution Size Resources 	<ul style="list-style-type: none"> Sensitivity Diversity MSI Status Nontraditional Populations Modality 		

Access

Progression

Completion

PDP and the Higher Education Ecosystem

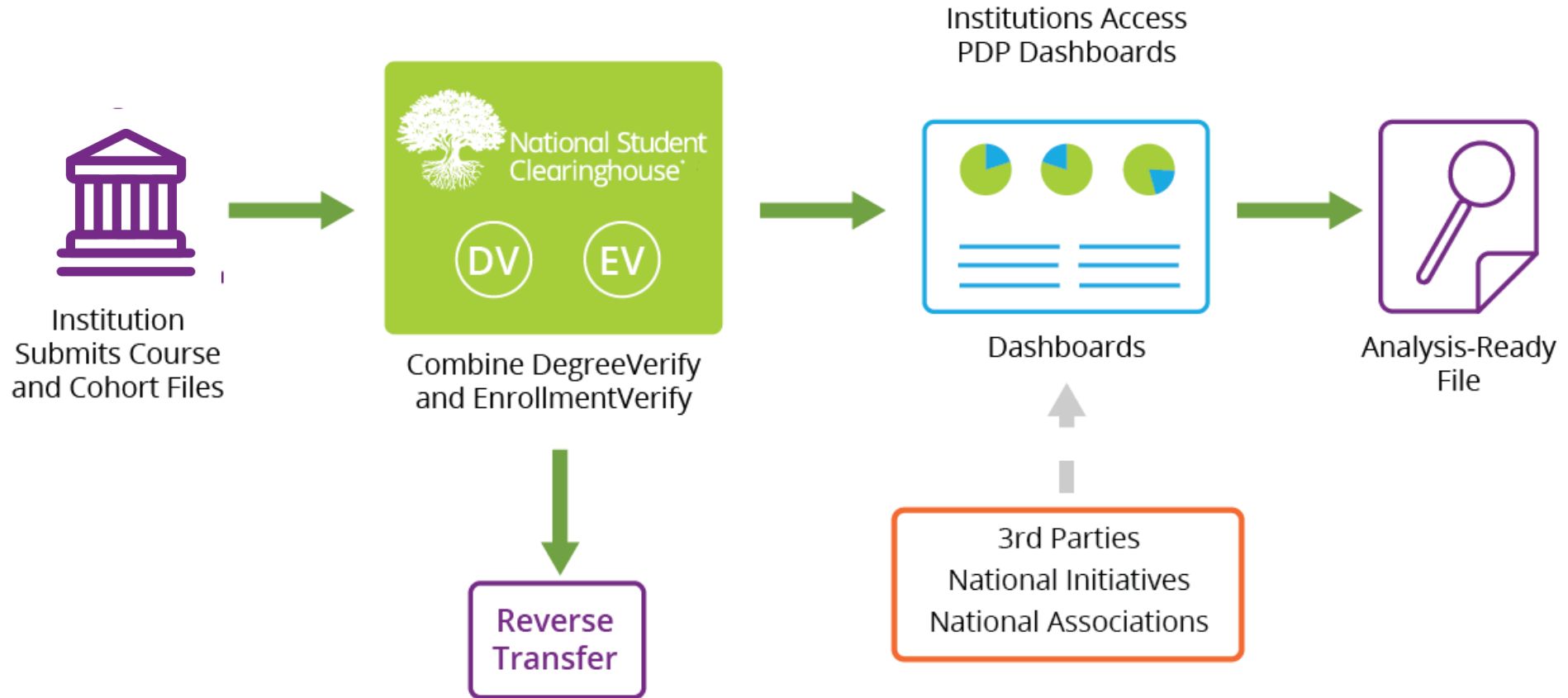


Our Partners



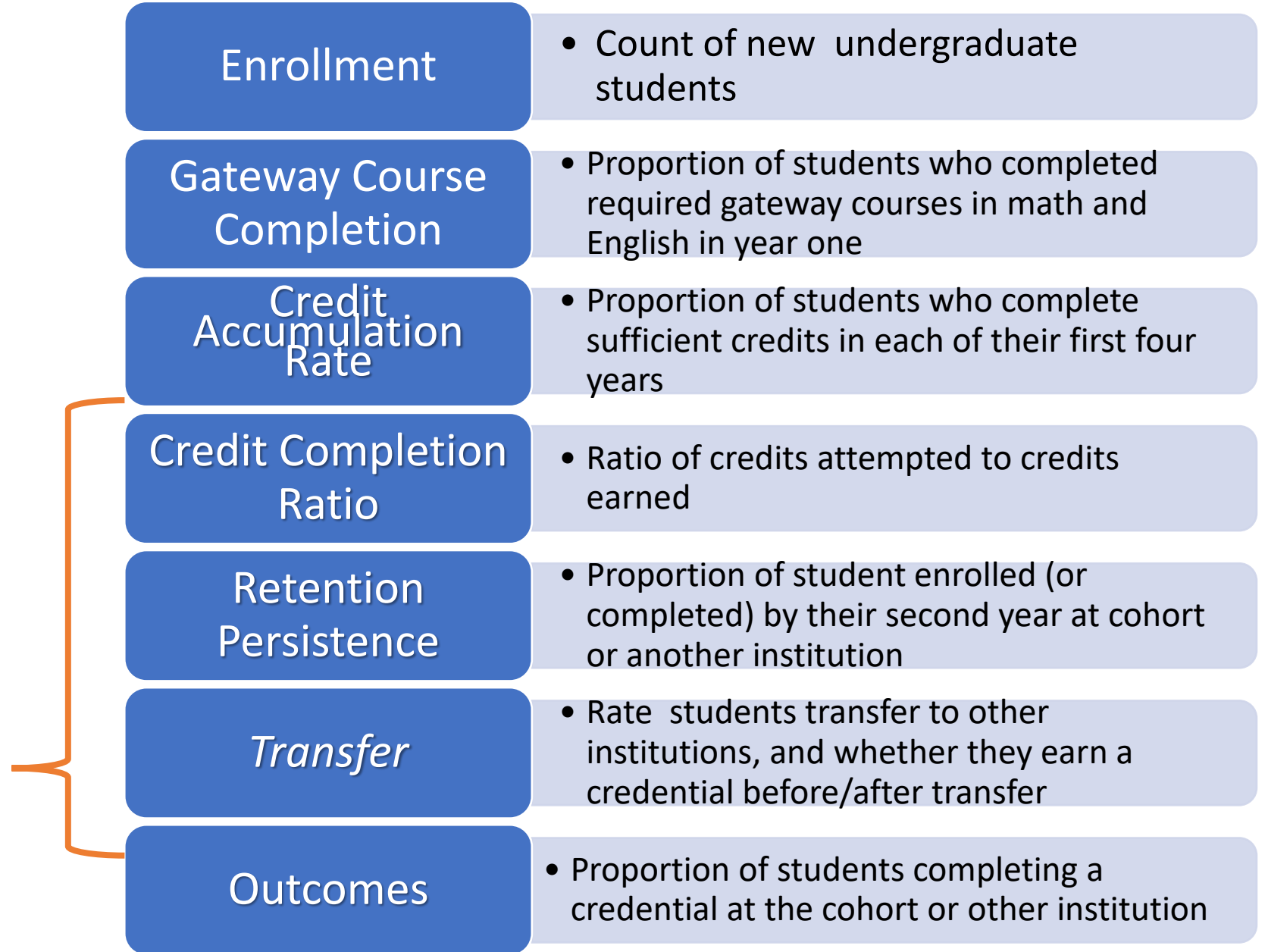
Supported by the
Bill & Melinda Gates Foundation & The Lumina Foundation

PDP Process



The PDP

- Count *all* new students for whole academic year
- Democratize access
- Identify Equity & Achievement Gaps
- Assess progress in closing gaps
- Benchmarking



Making the Case for Data-Informed Decision Making

- Creating a Sense of Urgency for Change
- Mythbusting
- Identifying Achievement and/or Equity Gaps
- Assessing the Impact of Reform
- Telling Our Story

Postsecondary Data Partnership



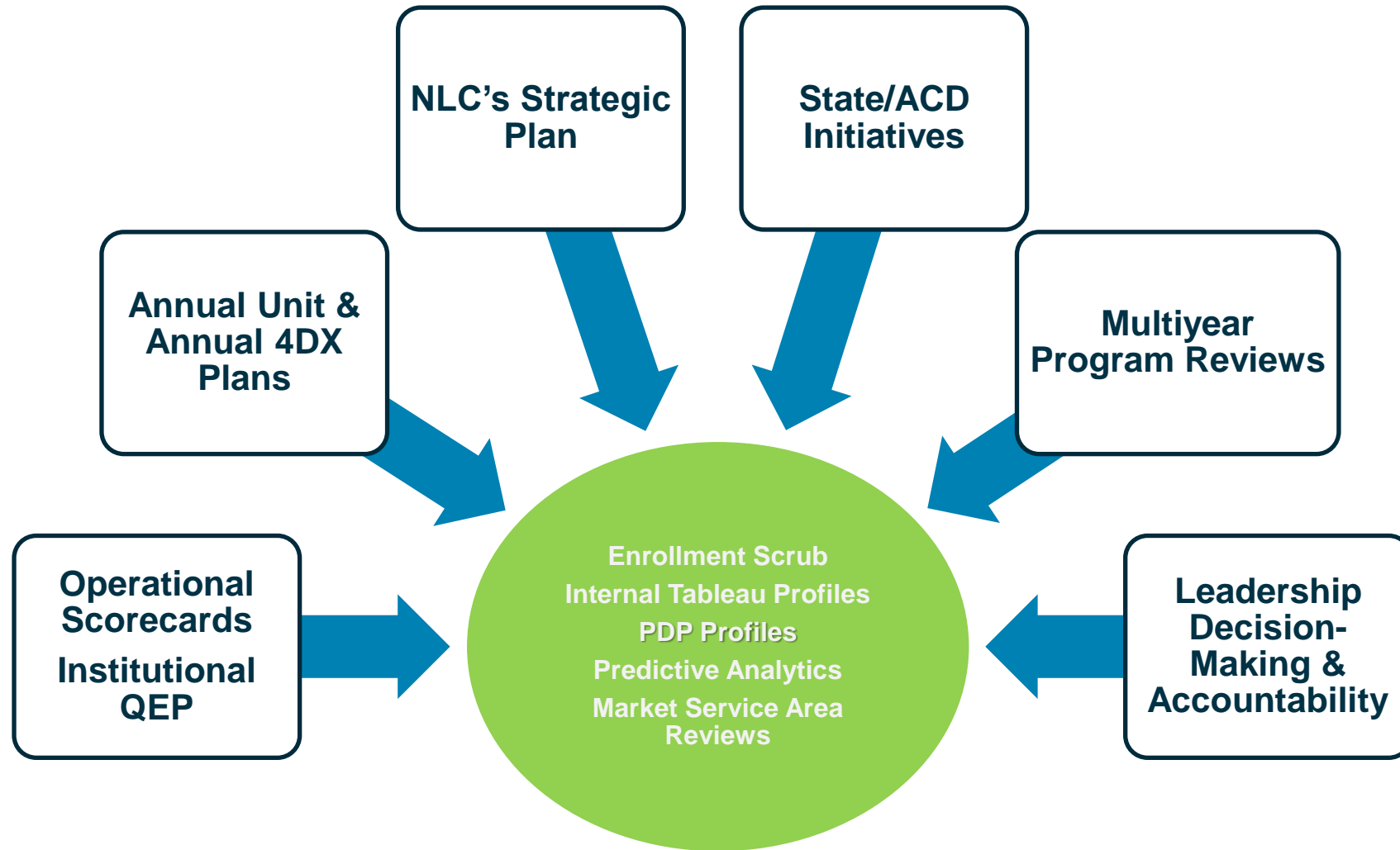
Interactive Dashboards



ALAMO COLLEGES DISTRICT
Northeast Lakeview College

NLC Adaptation

NLC Decision Support Ecosystem with PDP Linkage



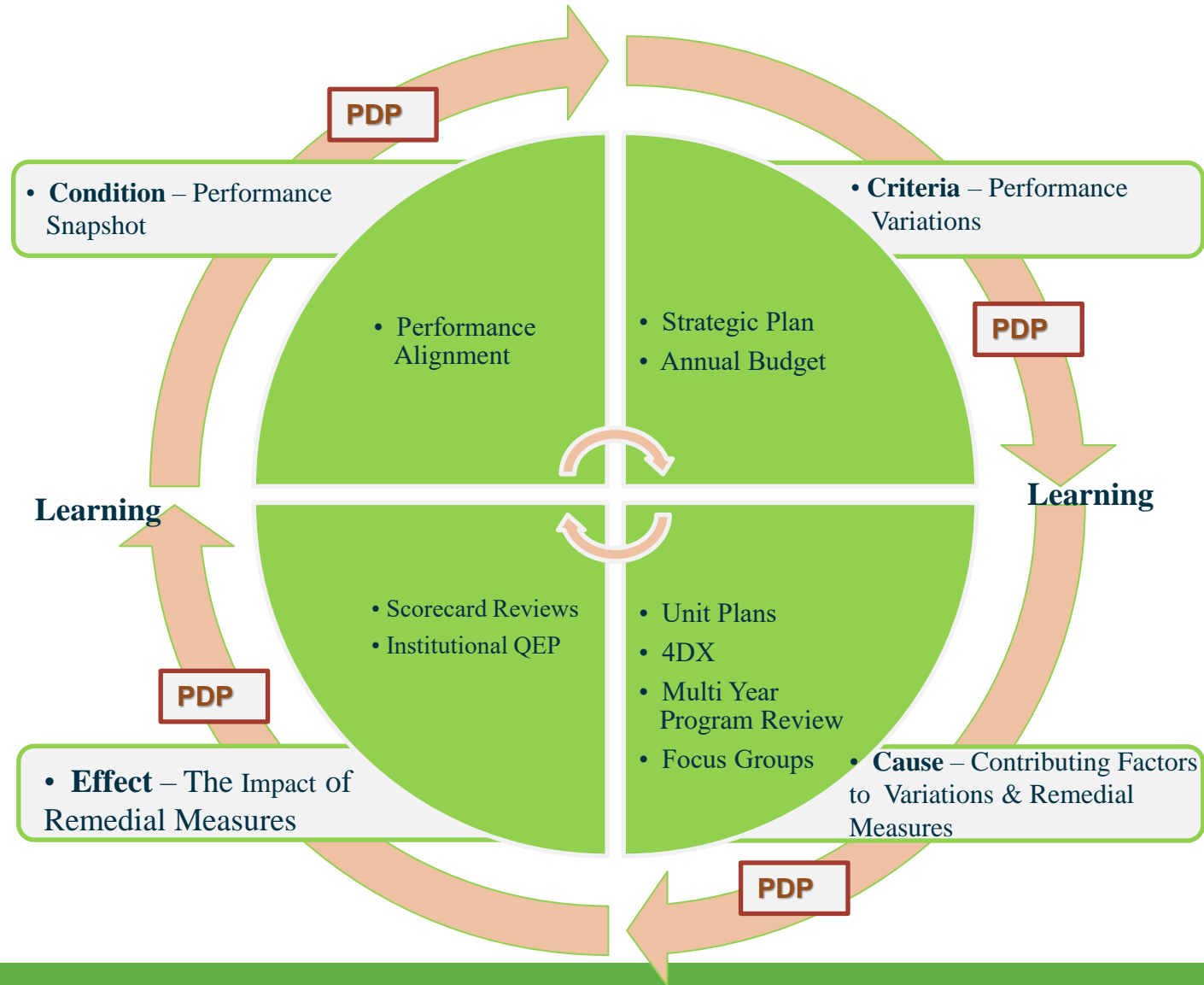
Strategic Planning and Institutional Effectiveness

2019-2022 NLC Strategic Plan - Institutional Goal 1: Quality Teaching, Learning and Student Success

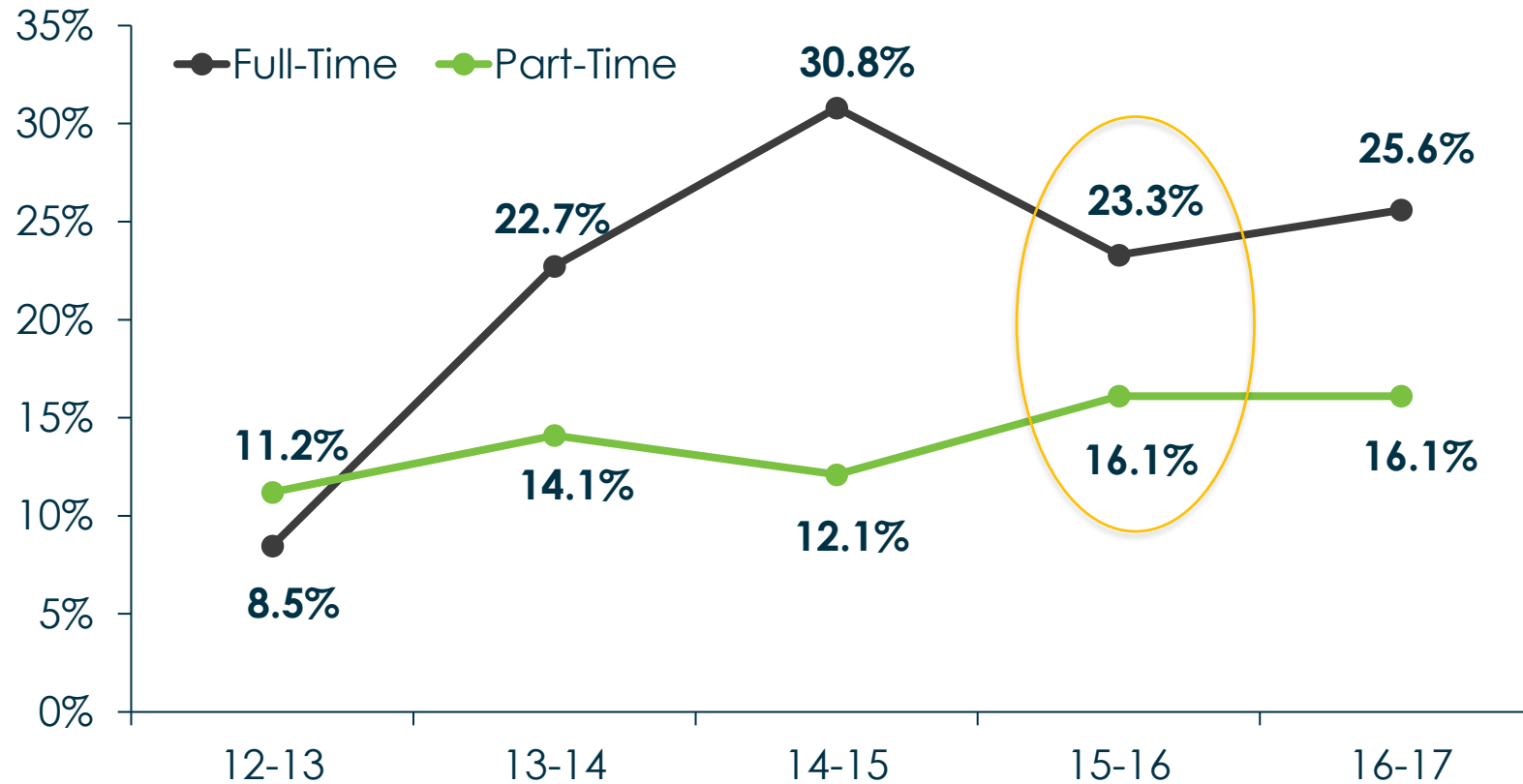
Establishing a foundation consistent with Objective 1 - Strategy 5 of Goal 1- to identify and utilize relevant technology to meet college population needs.

1. Student Mobility Tracking (Entry to Exit Enrollment Continuum) ★
2. Enrollment “Scrub” Analysis
3. Tableau Persistence Profiles (PGR & Course Completion)
4. [Postsecondary Data Profile NSC](#) (Linkage to Items 1-3)
5. Hanover Research (Predictive Analytics)
6. Collaborative relationships with our service providers
7. Integrated Learning and Operational Excellence

NLC Integrated Learning Concept



NLC Performance Snapshot: 3-Year FTIC Graduation Rates

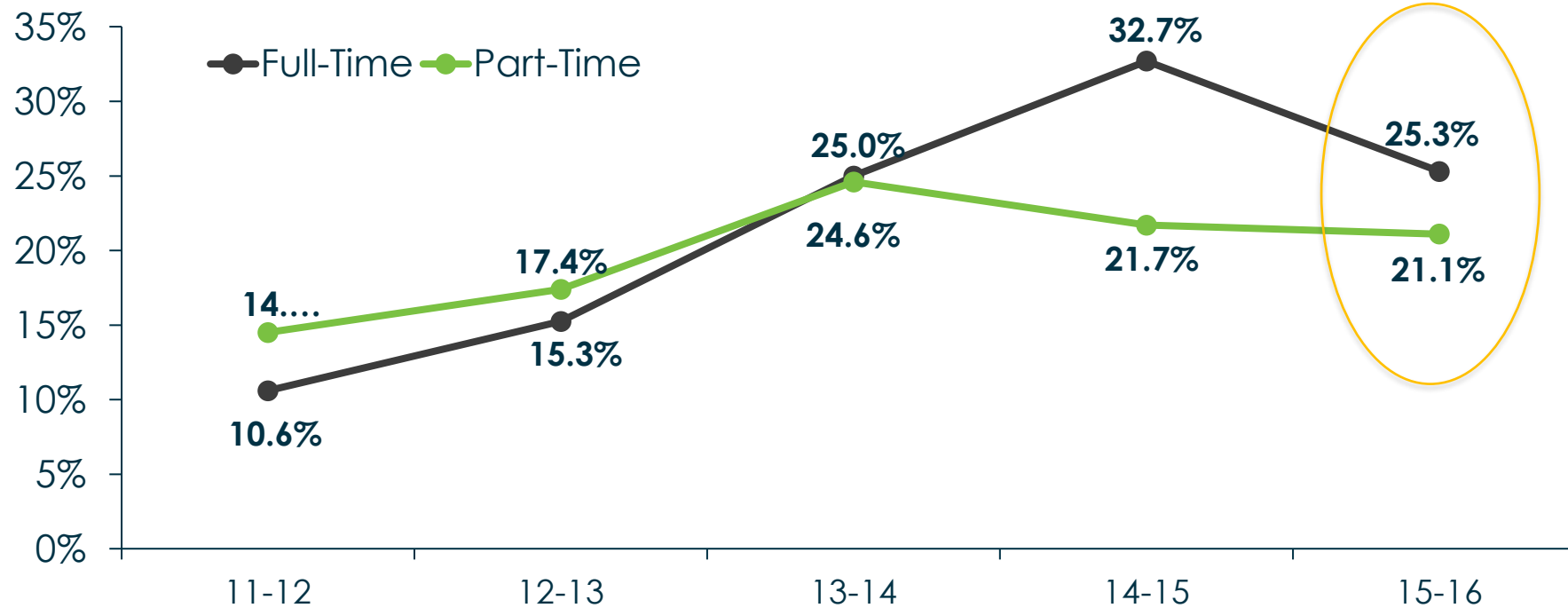


Condition: Decline in Performance

Criteria: KPI 3 & 4 Year Graduation Rates

Cause: Transfer Out Rates

NLC Performance Snapshot: 4-Year FTIC Graduation Rates

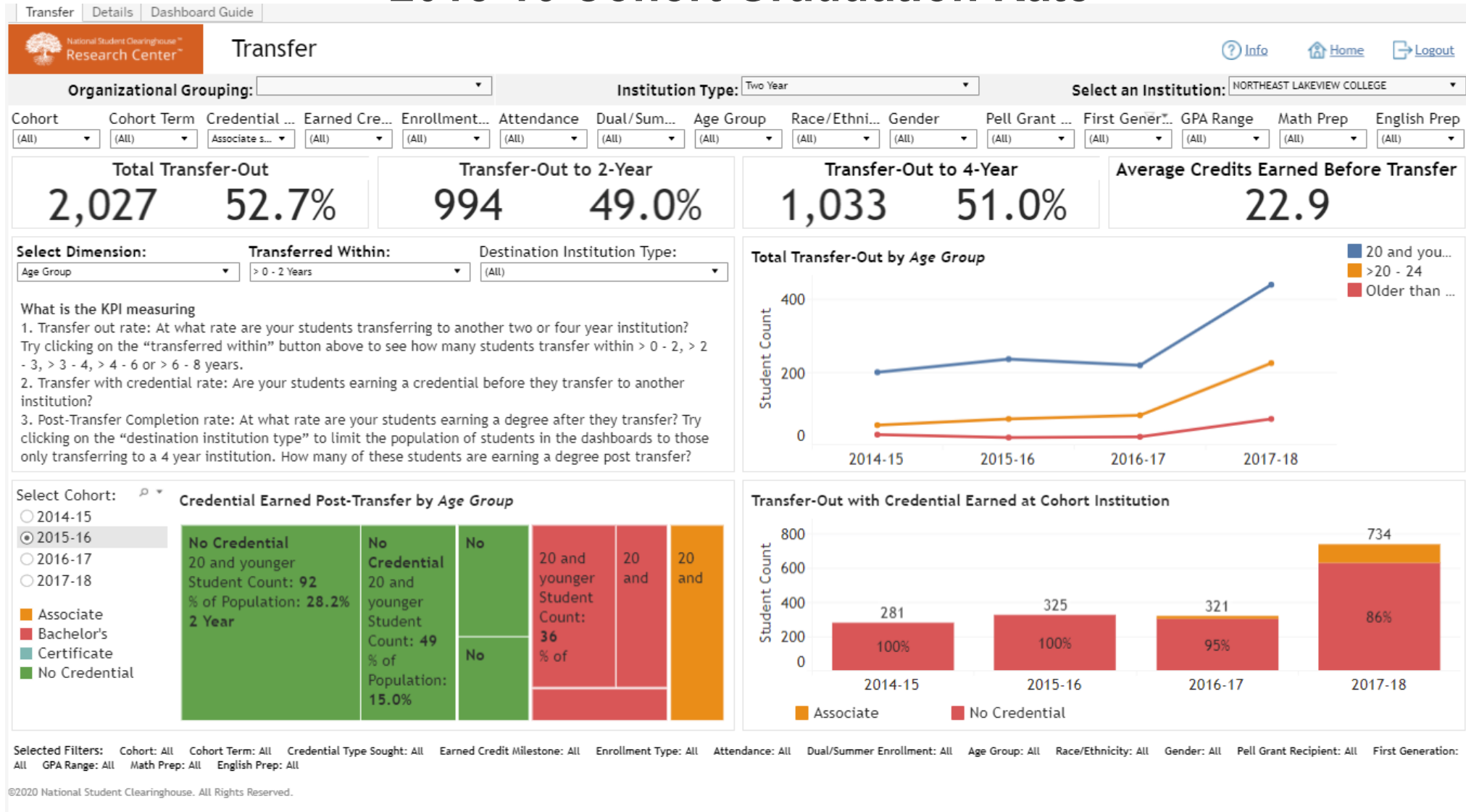


Condition: Decline in Performance

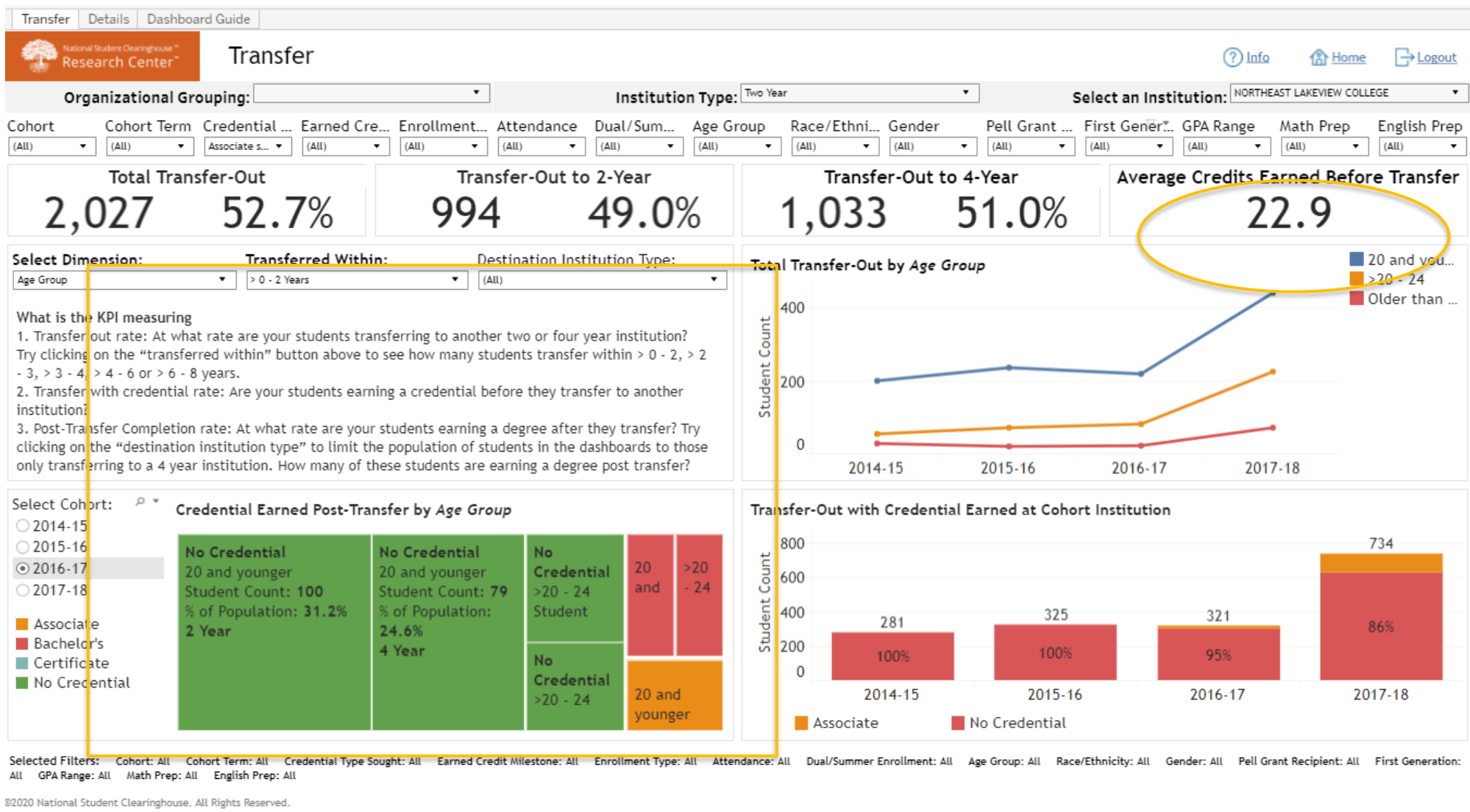
Criteria: KPI 3 & 4 Year Graduation Rates

Cause: Transfer Out Rates

Transfer Out Effects on 2015-16 Cohort Graduation Rate



Transfer Out Effects on 2016-17 Cohort Graduation Rate



Institutional QEP – “College Readiness Gap” (PDP Decision Support)

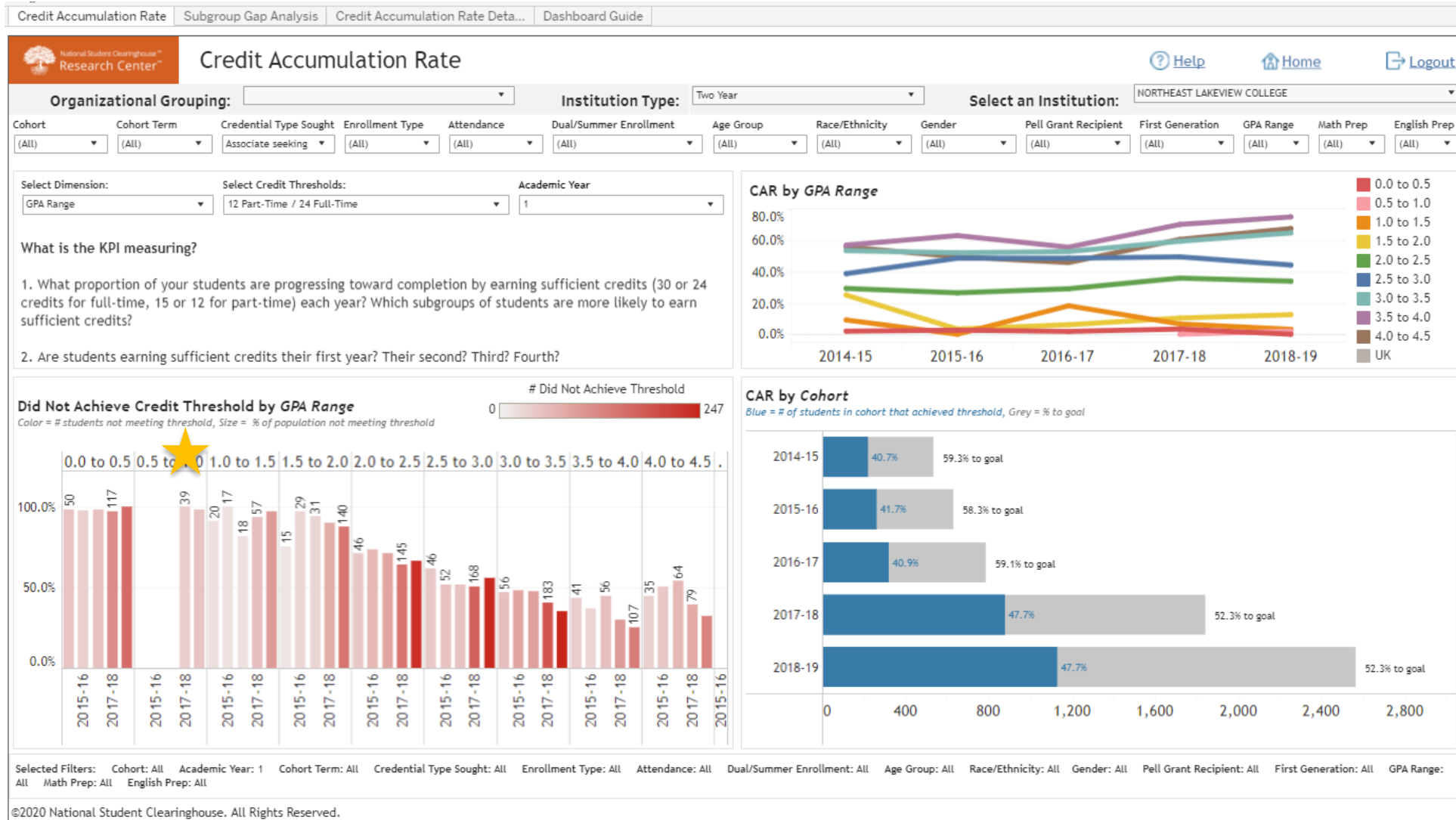
Cohort File

- Entry status
- High school completion & GPA
- First-generation status
- Race/ethnicity
- Dual enrollment
- Number credits attempted & transferred
- Math & English readiness

Course File

- Pell status
- Program Intent (degree type, transfer)
- GPA (term, cumulative)
- Course identifiers
- Course credits, grade, etc.
- Gateway Math & English
- Degree type sought
- Reverse Transfer information

Credit Accumulation Rate: GPA Range



Credit Accumulation Rate: Math Prep

Credit Accumulation Rate | Subgroup Gap Analysis | Credit Accumulation Rate Deta... | Dashboard Guide

National Student Clearinghouse Research Center™

Credit Accumulation Rate

Help | Home | Logout

Organizational Grouping: [] Institution Type: Two Year Select an Institution: NORTHEAST LAKEVIEW COLLEGE

Cohort: (All) Cohort Term: (All) Credential Type Sought: Associate seeking Enrollment Type: (All) Attendance: (All) Dual/Summer Enrollment: (All) Age Group: (All) Race/Ethnicity: (All) Gender: (All) Pell Grant Recipient: (All) First Generation: (All) GPA Range: (All) Math Prep: (All) English Prep: (All)

Select Dimension: Math Prep Select Credit Thresholds: 12 Part-Time / 24 Full-Time Academic Year: 1

What is the KPI measuring?

1. What proportion of your students are progressing toward completion by earning sufficient credits (30 or 24 credits for full-time, 15 or 12 for part-time) each year? Which subgroups of students are more likely to earn sufficient credits?
2. Are students earning sufficient credits their first year? Their second? Third? Fourth?

CAR by Math Prep

Year	Not Ready i...	Ready in Math	Unknown
2014-15	~30%	~45%	~25%
2015-16	~38%	~42%	~20%
2016-17	~38%	~40%	~22%
2017-18	~42%	~48%	~10%
2018-19	~42%	~48%	~10%

Did Not Achieve Credit Threshold by Math Prep

Did Not Achieve Threshold: 0 to 727

Color = # students not meeting threshold, Size = % of population not meeting threshold

Year	Not Ready in Math	Ready in Math	Unknown
2014-15	107	174	37
2015-16	120	221	26
2016-17	164	280	19
2017-18	429	514	20
2018-19	625	588	23

CAR by Cohort

Blue = # of students in cohort that achieved threshold, Grey = % to goal

Year	Students Achieved Threshold	% to Goal
2014-15	40.7%	59.3% to goal
2015-16	41.7%	58.3% to goal
2016-17	40.9%	59.1% to goal
2017-18	47.7%	52.3% to goal
2018-19	47.7%	52.3% to goal

Selected Filters: Cohort: All Academic Year: 1 Cohort Term: All Credential Type Sought: All Enrollment Type: All Attendance: All Dual/Summer Enrollment: All Age Group: All Race/Ethnicity: All Gender: All Pell Grant Recipient: All First Generation: All GPA Range: All Math Prep: All English Prep: All

©2020 National Student Clearinghouse. All Rights Reserved.

Credit Accumulation Rate: Subgroup Analysis Example

Credit Accumulation Rate | Subgroup Gap Analysis | Credit Accumulation Rate Deta... | Dashboard Guide

Credit Accumulation Rate [Home](#) [Logout](#)

Organizational Grouping: Institution Type: Select an Institution:

Cohort: Cohort Term: Credential Type Sought: Enrollment Type: Attendance: Dual/Summer Enroll: Age Group: Race/Ethnicity: Gender: Pell Grant Recipient: First Generation: GPA Range: Math Prep: English Prep:

Select Dimension: Select Threshold: Academic Year:

How have credit accumulation gaps between student subgroups changed from cohort to cohort?

Subgroup Gap Analysis by Math Prep

Select two values to compare:
 Not Ready in Math
 Ready in Math
 Unknown

● Not Ready in Math
● Ready in Math

Academic Year	Not Ready in Math (CAR %)	Ready in Math (CAR %)
2014-15	~33.0	~42.0
2015-16	~34.0	~36.0
2016-17	~33.0	~43.0
2017-18	~37.0	~47.0
2018-19	~32.0	~50.0

Selected Filters: Cohort: All Academic Year: 1 Cohort Term: All Credential Type Sought: All Enrollment Type: All Attendance: All Dual/Summer Enrollment: All Age Group: All Race/Ethnicity: All Gender: Male Pell Grant Recipient: All First Generation: All GPA Range: All Math Prep: All English Prep: All

©2020 National Student Clearinghouse. All Rights Reserved.

NLC Takeaways and Questions



To Learn More:

studentclearinghouse.org/colleges/pdp/

Contact us at:

pdp@studentclearinghouse.org

Stich@studentclearinghouse.org

Thank you!



Cohort File

- Entry status
- High school completion & GPA
- First-generation status
- Race/ethnicity
- Dual enrollment
- Number credits attempted & transferred
- Math & English readiness

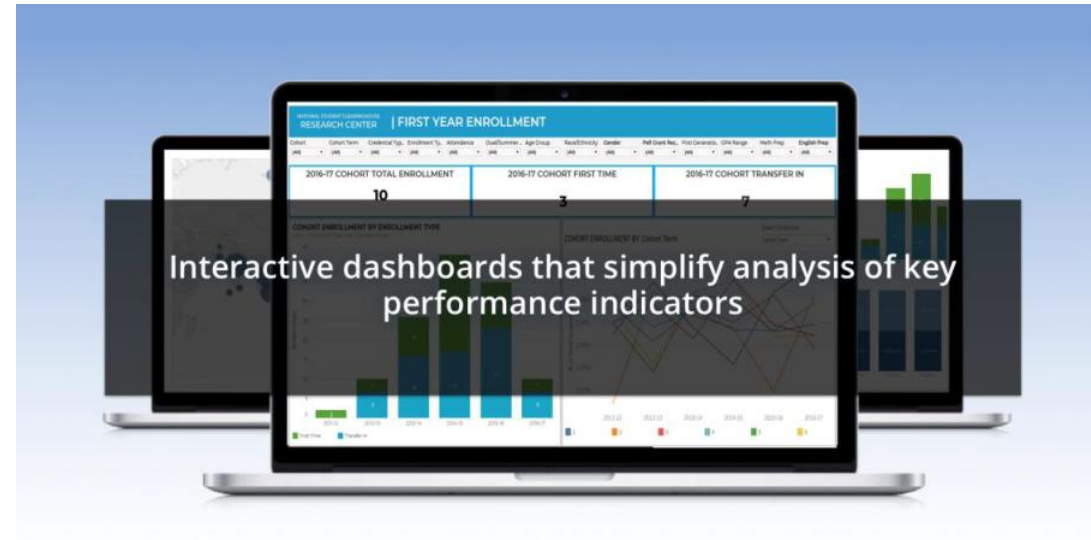
Course File

- Pell status
- Program Intent (degree type, transfer)
- GPA (term, cumulative)
- Course identifiers
- Course credits, grade, etc.
- Gateway Math & English
- Degree type sought
- Reverse Transfer information

Postsecondary Data Partnership

Dig into the data to look at equity gaps by filtering by:

- Cohort Year
- Cohort Term
- Credential Type Sought
- Pell
- First Generation
- Age
- Race/Ethnicity
- Gender
- Enrollment Type
- Attendance
- Dual/summer Enrollment
- GPA
- Academically Prepared for College Level math and/or English



Getting Started

Sign PDP
Contracts

- Data-sharing agreements

Program
Data

- Map and program to pull data
- Typically one full week of work the 1st time; 3-5 years of historical

Submit
Data

- First time, approximately 1–2 weeks of passing validations and troubleshooting
- Subsequent times, less than 1 week

Pricing

Annual Institutional Cost

FREE until July 2021 with data submitted by Dec 31, 2020

\$2,695 (for schools with <4,000 FTE enrollment)

\$3,295 (for schools with $\geq 4,000$ to 9,999 FTE enrollment)

\$3,995 (for schools with $\geq 10,000$ FTE enrollment)

Institutions that participate in PDP will receive their Student Tracker Premium subscription at 50% off beginning July 2021