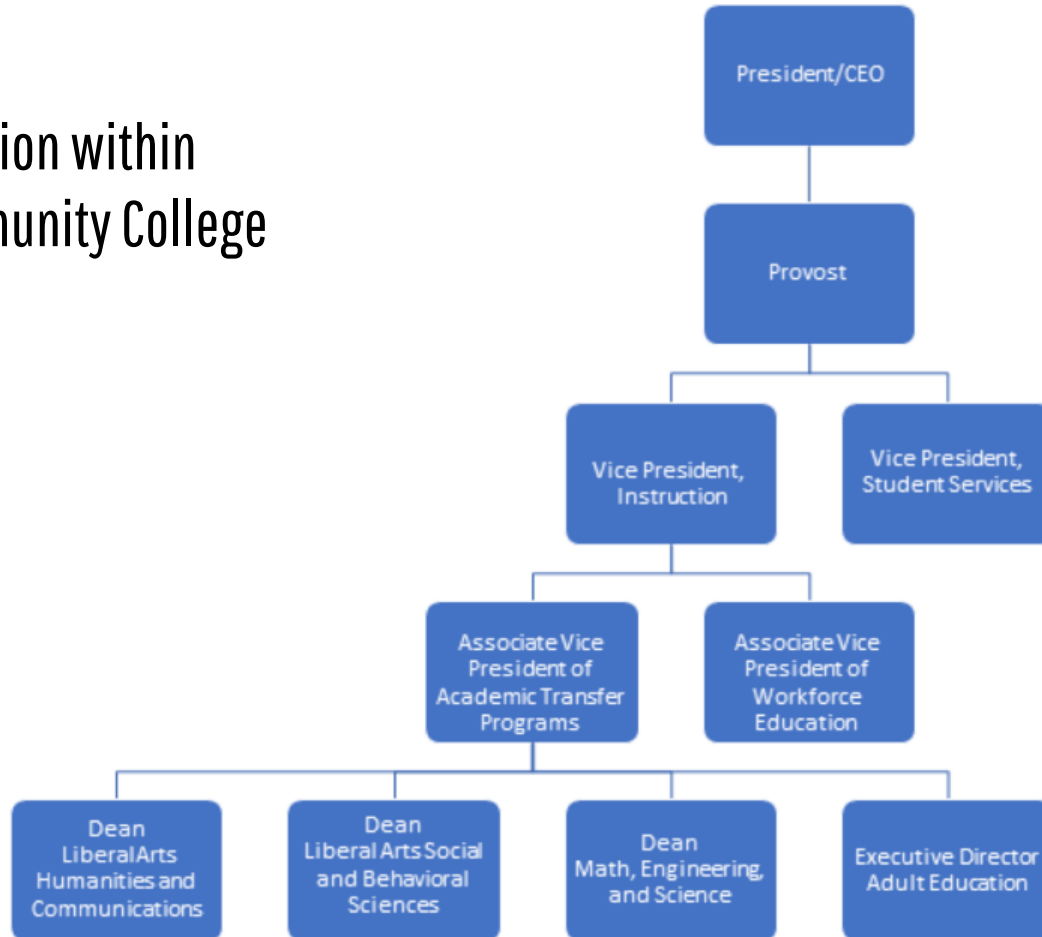


Using Adult Education to Increase Access, Persistence, and Completion for Underprepared Students

Katherine Dowdy
Executive Director, Adult Education
Austin Community College District

Adult Education within Austin Community College

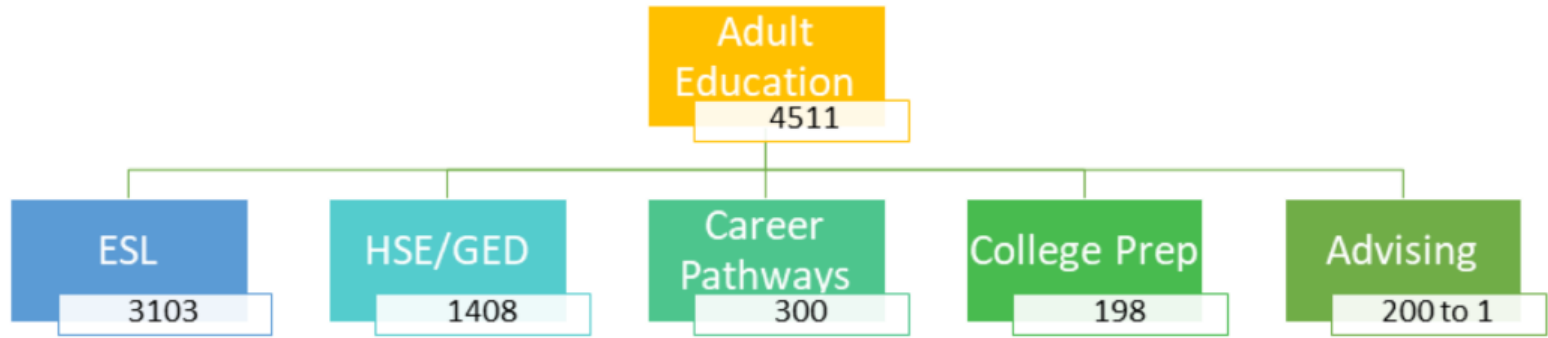


Adult Education Students at Austin Community College

1. ACC AE fiscal agent since 1970s.
2. ACC student ID numbers: fully in Colleague
3. ACC student ID (card)
4. AE classes in college system; at most campuses.
5. ACC students have access to ACC student services (almost all)
6. AE service area different from ACC service area but working on this.



ACC Adult Education 2017 Enrollment



ACC Adult Education And Guided Pathways



Recent Changes for College Prep

1. More officially connected to Developmental Education
2. Expanded to two levels and subject focused
3. Working to expand to more campuses

Comparison of College Prep and Developmental Education

Both are great options for students who need additional instruction to pass the TSI exam and to succeed in college credit courses

We differ, in that we are more of a holistic based program, rather than just content based. We approach our instruction with the premise that students need a Growth Mindset to be successful in coursework. In our program, we cultivate success strategies, content based instruction tailored to adult learning principles, and provide a secure learning environment where students can make mistakes and learn without having to worry about a grade affecting their academic standing.

We can, within specific parameters, evolve and change to accommodate new students coming into our program where there is a demonstrated need for our services

College Prep--an Interventionist Strategy

We are currently working with the math department at Austin Community College to offer math options for students who were not able to matriculate to the prescribed college math level section of their co-requisite courses. This intervention helps students maintain continuity in learning rather than having to sit out until the next semester starts.

We also are accepting students from dev ed math who were enrolled in lower level math courses that are no longer being offered in the math department

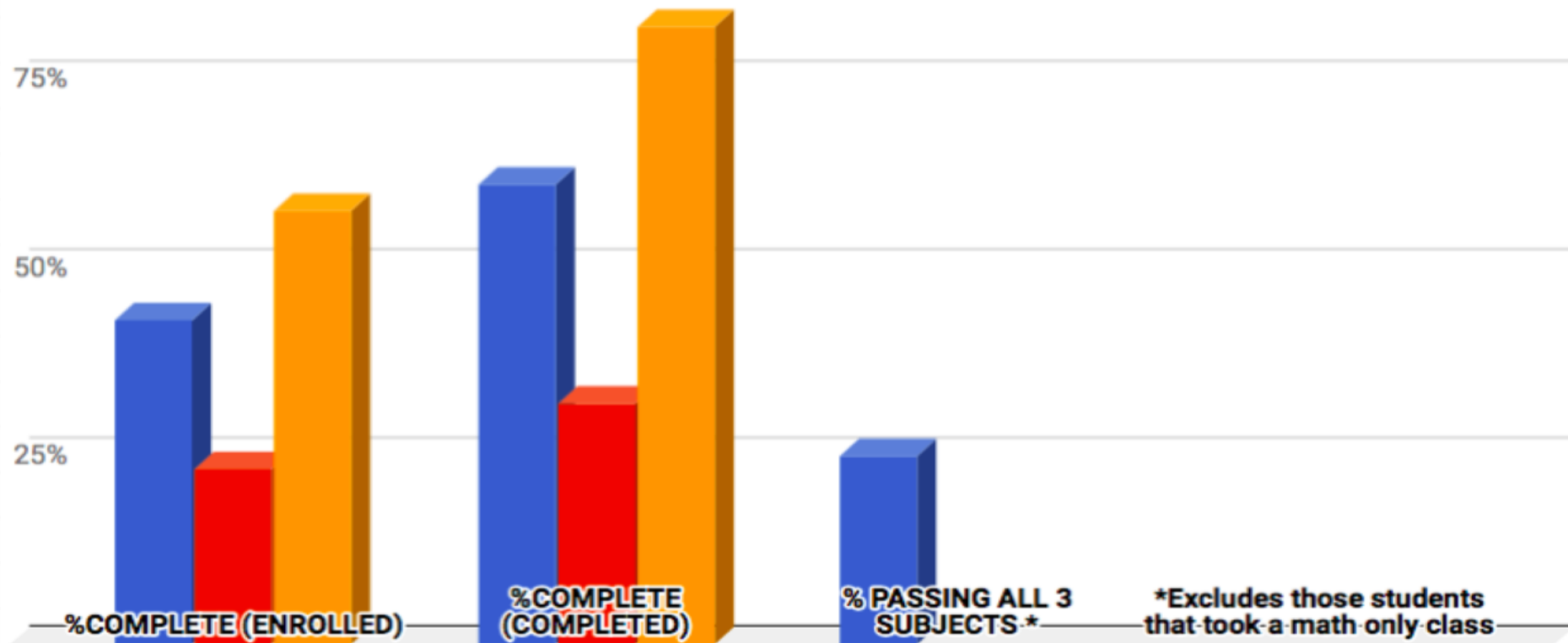
We would like to continue to form strong alliances with the math department to best serve those students who need an alternative model of instruction to succeed in their chosen academic/career path.

College Prep data: Fall semester 2017

Reading, Math and Writing

% TSI Complete (Combined)

Read Math Write



*Excludes those students that took a math only class

Student story

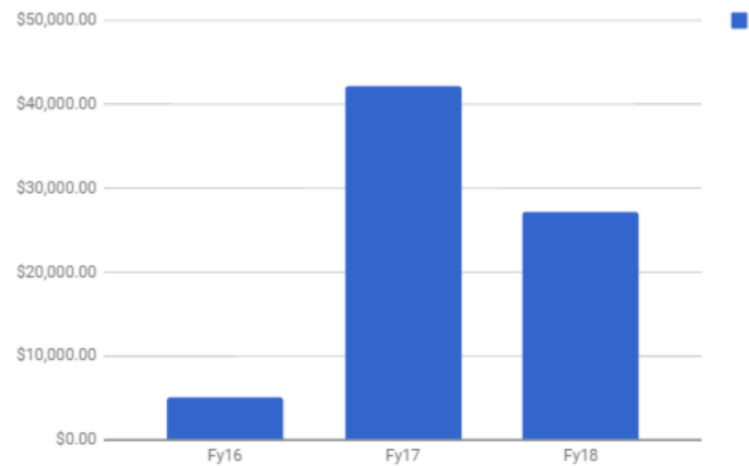
Sid and Jose both went through the College Prep program and passed the TSI exam. Shortly after, they were admitted to the College of Engineering at Texas A&M through a joint partnership between ACC and Texas A&M.



Career Pathways: 2, 3, 4 for 1

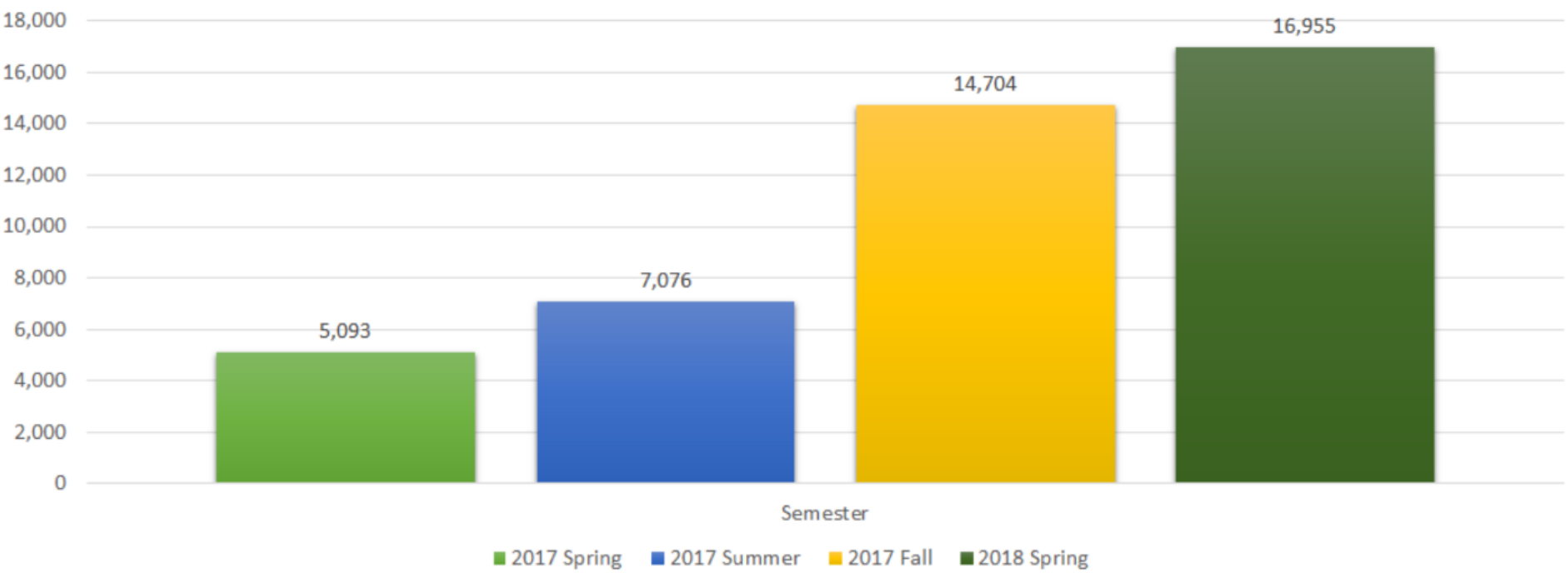
1. What is it? IBEST or IET--but essentially is:
Basic Skills Support with Training (2 for 1):
CE or Academic + \$
2. TxCHSE completion (3 for 1): Ability to Benefit
3. TSI completion (4 for 1)

Student Tuition Paid to Continuing Education



Ability to Benefit

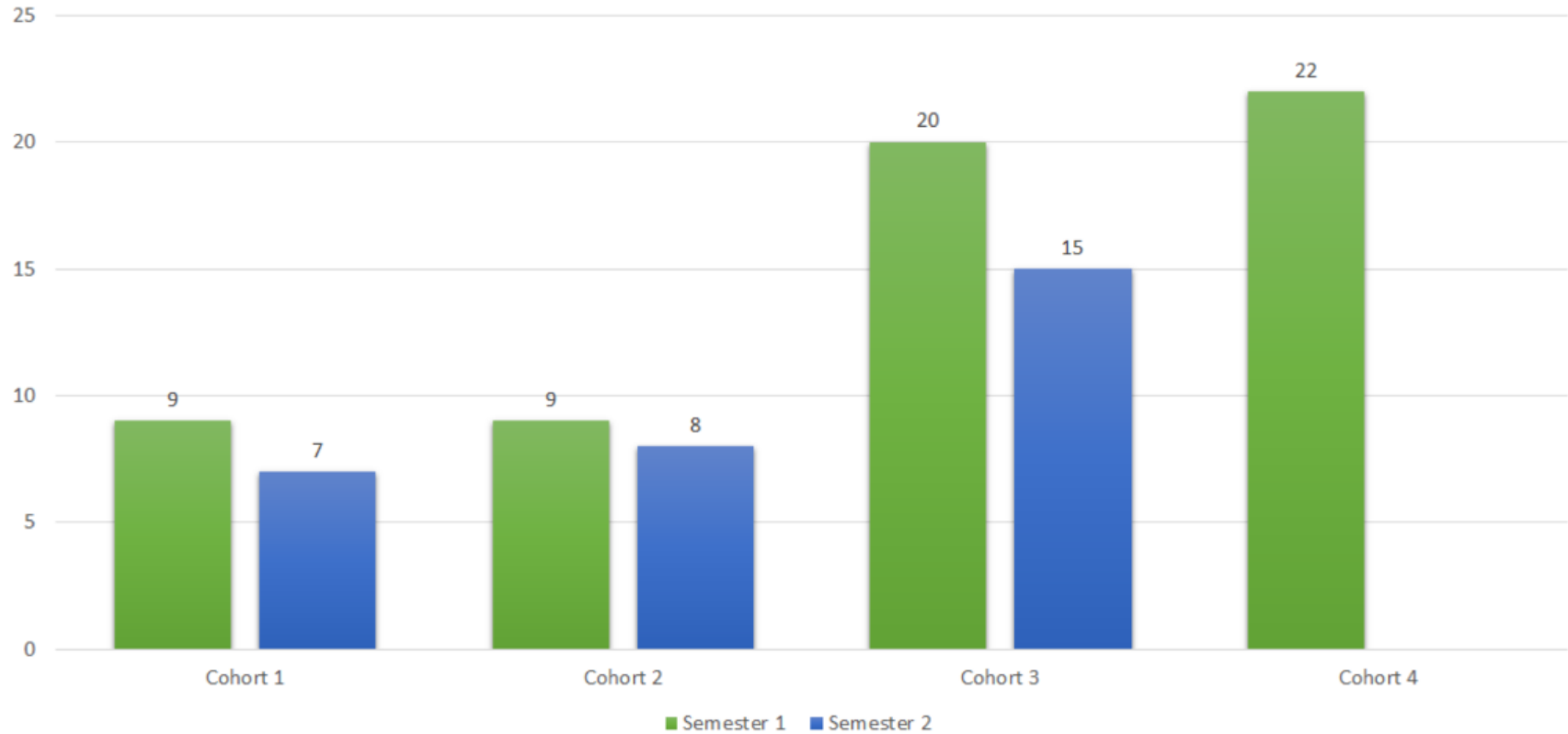
Tuition Paid to ACC from AE



Academic Level 1 Cert Support : Ability to Benefit

Ability to Benefit (ATB) reduces barriers to accessing higher education for individuals without a high school credential. It allows institutions to reach and serve these individuals by partnering with adult basic education.

Persistence Semester 1 to Semester 2



Ability to Benefit

Student story



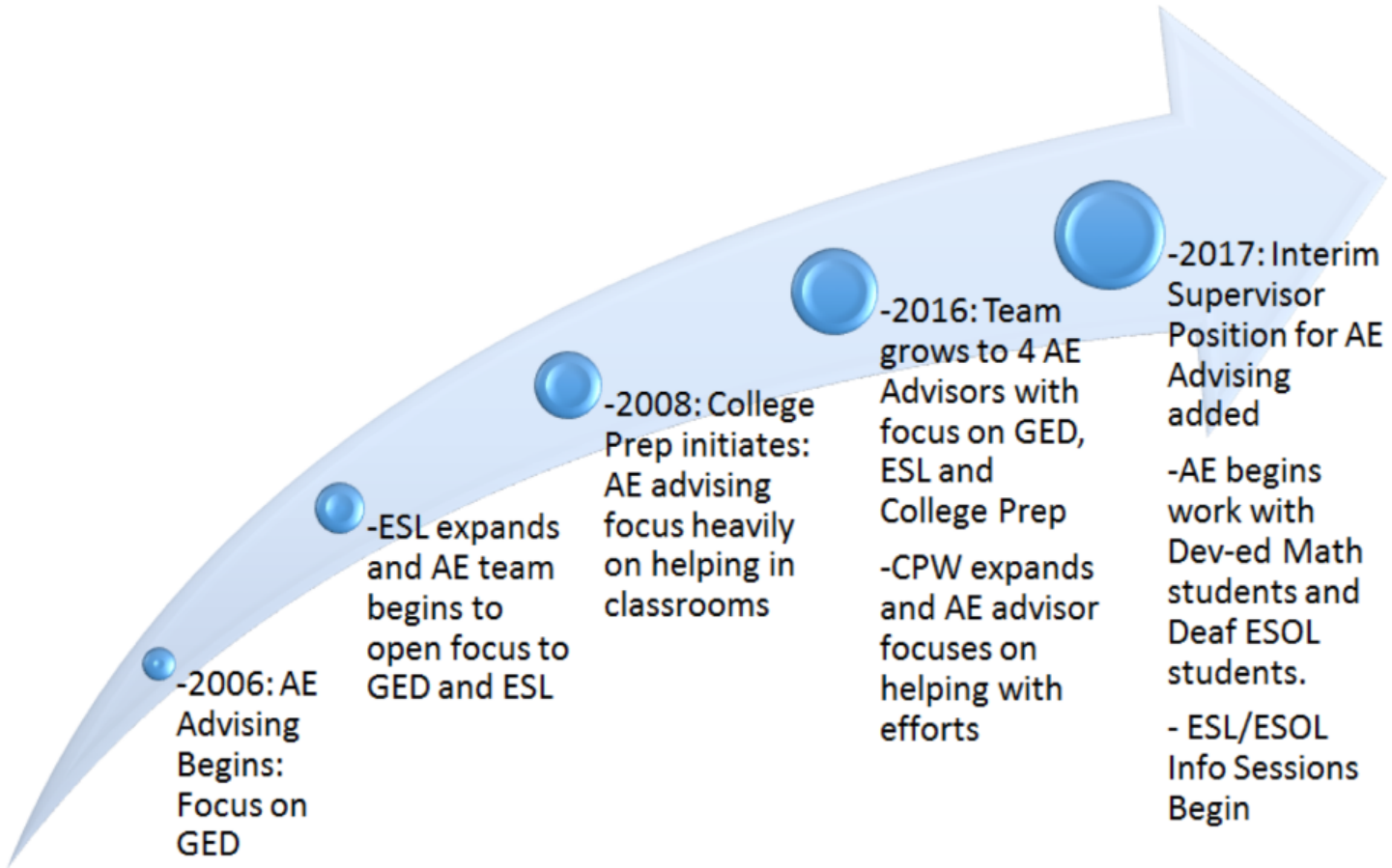
Challenges for Academic Level 1 Certificate Support Challenges (ATB or Level Up)

1. Systems and referrals
2. Books
3. Hybrid roles for faculty

Intensive Advising



The Evolution of AE Advising



Referrals from ACC Dev Ed to ACC AE

1. Referred from academic advisors, faculty or self-referred.
2. Complete AE application and assessment
3. Interviewed and placed into appropriate class. 60% of students enter College Prep, 20% go to Career Pathways, 15% go to academic, and 5% go to HSE.
4. Certain number of referrals do not make it to AE.

Adult Education and Developmental Education Crosswalk

Areas	AE College Prep	AE Career Pathways	DE Math	DE INRW	ESOL
NCBO/Reimbursable/Count as part of DE hour limit?	Possible, under evaluation	Possible, under evaluation	Yes with co-requisite	Yes with co-requisite	Yes
TSI Level Focus	Full range of TSI; new focus on lowest levels.	TSI prep for students who want to move past Academic Level 1 Cert	Full range of TSI except ABE levels 1 and 2	Full range of TSI	Lowest level sent to AE ESL
Success Skills and advising embedded	Success Skills and holistic advising	Success Skills and holistic advising	Holistic advising	Holistic advising	Holistic advising
Co-requisite	No	Yes	Yes	Yes	No
TSI Complete	TSI retest	TSI retest	Course Completion	Course Completion	Course Completion with TSI on file
Length	1-2 semesters, longer is possible	1-2 semesters, longer is possible	1-2 semesters	1-2 semesters	1-3 semesters
SACS Qualified Instructors	85%	No	100%	100%	100%
Financial Aid Eligible	No	Not for AE, yes for co-req	Yes	Yes	Yes
Enrollment: Assessment and Application	TABE and AE application	TABE and AE application	TSI and College application	TSI and College application	TSI and College application
Stem or Non-Stem	Focus on STEM	Focus on Level 1 Cert related math	STEM or nonSTEM	N/A	N/A
Specialized Reading Support	Available at HSE level	Focus on Level 1 Cert related reading/writing	N/A	Yes	Yes

Challenges for AE and College Integration

1. Enrollment and Assessment: Crossing systems
2. Referrals
3. Curriculum alignment and quality concerns
4. Bandwidth
5. Free, if it doesn't cost...
6. Trust